

INDIANAPOLIS EXEC (TYQ)(KTYQ) 14 NW UTC-5(-4DT) N40°01.84' W86°15.09'
922 B NOTAM FILE HUF

CHICAGO
H-5E, 10F, L-27D
IAP

RWY 18-36: H5500X100 (CONC-GRVD) S-45, D-90 HIRL

RWY 18: REIL. PAPI(P2L)—GA 3.0° TCH 51'. Hangar.

RWY 36: REIL. PAPI(P2L)—GA 3.0° TCH 53'. Tree.

SERVICE: S4 **FUEL** 100LL, JET A, A+ **OX** 1, 2, 3 **LGT** HIRL Rwy 18-36 preset on med ints dusk to dawn; to incr ints and **ACTIVATE** REIL Rwy 18 & Rwy 36—CTAF. PAPI Rwy 18-36 operates continuously.

AIRPORT REMARKS: Attended 1100-0100Z†. For svcs after hrs call FBO on 317-769-4487. Self svc 100LL fuel avbl 24 hrs with credit card. For fuel and acft svcs ctc FBO on 130.4. Conditions not monitored 0100-1100Z†. Remote controlled model acft activity 0.1 NM west of Rwy 18-36, surface—400' AGL. Rwy 36 calm wind/crosswind rwy.

AIRPORT MANAGER: (317) 385-3015

WEATHER DATA SOURCES: AWOS-3PT 120.725 (317) 769-3154.

COMMUNICATIONS: CTAF/UNICOM 123.05

Ⓡ **INDIANAPOLIS APP/DEP CON** 127.15 (Active Rwy 14-32 at IND) 124.65 (Active Rwy 05-23 at IND)

GCO 121.725 (INDIANAPOLIS CLNC and FLIGHT SERVICES, 4 slow clicks to activate) (If unavbl call 317-227-5743)

RADIO AIDS TO NAVIGATION: NOTAM FILE HUF.

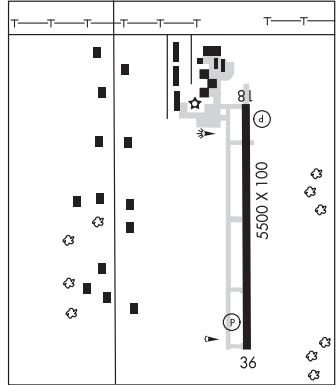
BRICKYARD (H) VORTACW 116.3 VHP Chan 110 N39°48.88' W86°22.05' 021° 14.0 NM to fld. 872/1E.

TACAN unusable.

312°-346° byd 25 NM blo 4,000'

ILS 111.3 I-TYQ Rwy 36. Autopilot coupled approach na below 1,900' MSL.

COMM/NAV/WEATHER REMARKS: APP/DEP CON sectorization based on active rwy at Indianapolis International arpt.



INDIANAPOLIS INTL (IND)(KIND) P (A) 7 SW UTC-5(-4DT) N39°43.04' W86°17.68'
796 B LRA Class I, ARFF Index D NOTAM FILE IND

ST LOUIS
H-5E, 10F, L-27D
IAP, AD

RWY 05L-23R: H11200X150 (CONC-GRVD) S-145, D-300, 2S-175,

2D-550 PCN 103R/B/W/T HIRL CL

RWY 05L: ALSF2. TDZL. PAPI(P4L)—GA 3.0° TCH 74'. RVR-TMR 0.3% up.

RWY 23R: MALSR. PAPI(P4L)—GA 3.0° TCH 71'. RVR-TMR 0.5% down.

RWY 05R-23L: H10000X150 (CONC-GRVD) S-145, D-300, 2S-175, 2D-550 PCN 93 R/B/W/T HIRL CL

RWY 05R: ALSF2. TDZL. PAPI(P4L)—GA 3.0° TCH 71'. RVR-TMR

RWY 23L: MALSR. PAPI(P4R)—GA 3.0° TCH 75'. RVR-TMR Antenna.

RWY 14-32: H7278X150 (ASPH-GRVD) S-145, D-300, 2S-175, 2D-550 PCN 63 F/C/W/T HIRL

RWY 14: MALSR. PAPI(P4L)—GA 3.0° TCH 74'. RVR-TR Antenna.

RWY 32: MALSR. PAPI(P4R)—GA 3.0° TCH 73'. RVR-TR

RUNWAY DECLARED DISTANCE INFORMATION

RWY 05L:TORA-11200 TODA-11200 ASDA-11200 LDA-11200

RWY 05R:TORA-10000 TODA-10000 ASDA-10000 LDA-10000

RWY 14: TORA-7278 TODA-7278 ASDA-7278 LDA-7278

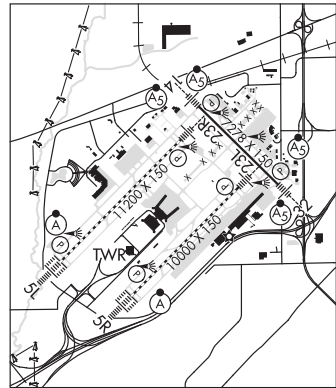
RWY 23L:TORA-10000 TODA-10000 ASDA-10000 LDA-10000

RWY 23R:TORA-11200 TODA-11200 ASDA-11200 LDA-11200

RWY 32: TORA-7278 TODA-7278 ASDA-7278 LDA-7278

SERVICE: S4 **FUEL** 100LL, JET A, A1+ **OX** 1, 3 **LGT** Rwy 14 PAPI unusbl byd 8° rgt of course. **MILITARY**— **FUEL** A, A+ (C317-248-4948.) (NC-100LL, A1+)

AIRPORT REMARKS: Attended continuously. Large flocks of birds on and invof arpt. Primary student touch and go lds not permitted. Be alert to close proximity of Rwy 14-32 to northeast ramp. Noise abatement procedures in effect contact arpt manager. Twy H runs contiguous at northeast ramp. Twy V is not avbl for air carrier ops. Flight Notification Service (ADCUS) available.



CONTINUED ON NEXT PAGE

CONTINUED FROM PRECEDING PAGE

AIRPORT MANAGER: 317-487-9594

WEATHER DATA SOURCES: ASOS (317) 241-0348 TDWR.

COMMUNICATIONS: D-ATIS 134.25 UNICOM 122.95

BRICKYARD RCO 122.4 (TERRE HAUTE RADIO)

Ⓡ APP CON 127.15 (East of active rwy) 124.65 (West of active rwy) 128.175

INDY TOWER 120.9 GND CON 121.8 121.9 CLNC DEL 128.75

PRE TAXI CLNC 128.75

Ⓡ DEP CON 124.95 (East) 119.05 (West)

CPDLC (LOGON KUSA)

PDC

AIRSPACE: CLASS C svc ctc APP CON.

VOR TEST FACILITY (VOT) 109.6

RADIO AIDS TO NAVIGATION: NOTAM FILE HUF.

BRICKYARD (H) VORTACW 116.3 VHP Chan 110 N39°48.88' W86°22.05' 149° 6.7 NM to fld. 872/1E.

TACAN unusable:

312°-346° byd 25 NM blo 4,000'

ILS/DME 111.75 I-IND Chan 54(Y) Rwy 05L. Class IIID. DME also serves Rwy 23R. LOC unusable byd 20° rgt of course.

ILS/DME 111.15 I-OQV Chan 48(Y) Rwy 05R. Class IIT.

ILS 110.5 I-BJP Rwy 14. Class IE.

ILS/DME 111.15 I-FVJ Chan 48(Y) Rwy 23L. Class IA. Glideslope unusable byd 5° left of LOC course.

ILS/DME 111.75 I-UZK Chan 54(Y) Rwy 23R. Class IE. DME also serves Rwy 05L. DME unusable within 1 NM.

ILS 110.5 I-COA Rwy 32. Class IE.

INDIANAPOLIS METRO (UMP)(KUMP) 8 NE UTC-5(-4DT) N39°56.12' W86°02.70'

ST LOUIS

811 B NOTAM FILE HUF

L-27D

RWY 15-33: H4004X100 (ASPH-GRVD) S-17 MIRL 0.6% up SE

IAP

RWY 15: REIL. PAPI(P4L)—GA 3.0° TCH 43'. Thld dspcd 156'. Road.

RWY 33: REIL. PAPI(P4L)—GA 3.5° TCH 27'. Tree.

SERVICE: S4 FUEL 100LL, JET A OX 3 LGT ACTIVATE REIL Rwy 15 and 33, MIRL Rwy 15-33—CTAF.

AIRPORT REMARKS: Attended 1300-0000Z†. Acft tkt/lgd from Rwy 15 during calm wind/crosswind conditions; during any questionable period Rwy 15 shall be preferred rwy—call arpt manager 317-487-9594. FBO phone number 317-849-0840. 500' AGL moored hot air balloon located approximately 4.4 miles north-northwest of arpt. Balloon will opr daily from 1300-2200Z† and is internally illuminated.

AIRPORT MANAGER: (317) 487-7243

WEATHER DATA SOURCES: AWOS-3 119.375 (317) 842-3911.

COMMUNICATIONS: CTAF/UNICOM 123.0

Ⓡ APP/DEP CON 127.15

CLNC DEL 121.625

RADIO AIDS TO NAVIGATION: NOTAM FILE HUF.

SHELBYVILLE (L) VOR/DME 112.0 SHB Chan 57 N39°37.95'

W85°49.46' 330° 20.8 NM to fld. 805/1E.

VOR unusable:

Byd 25 NM blo 3,000'

180°-270° byd 17 NM blo 6,000'

METROPOLITAN NDB (MHW) 338 UMP N39°56.26' W86°03.01' at fld. 785/3W.

