

MIAMI INTL (MIA)(KMIA) 8 NW UTC-5(-4DT) N25°47.72' W80°17.41'

MIAMI
H-81, L-23C, A
IAP, AD

9 B AOE LRA Class I, ARFF Index E NOTAM FILE MIA

RWY 09-27: H13016X150 (ASPH-GRVD) S-130, D-210, 2S-175,

2D-420, 2D/2D2-850 PCN 70 F/A/X/T HIRL CL

RWY 09: MALSR. PAPI(P4L)—GA 3.0° TCH 72'. RVR-TMR Thld dsplcd 1358'. Railroad. Rgt ttc.

RWY 27: MALSR. PAPI(P4L)—GA 3.0° TCH 71'. RVR-TMR Thld dsplcd 261'.

RWY 08R-26L: H10506X200 (ASPH-GRVD) S-130, D-210, 2S-175, 2D-420, 2D/2D2-850 PCN 70 F/A/X/T HIRL CL

RWY 08R: MALSR. TDZL. PAPI(P4L)—GA 3.0° TCH 77'. RVR-TR

RWY 26L: MALSF. PAPI(P4L)—GA 3.0° TCH 73'. RVR-TR Rgt ttc.

RWY 12-30: H9360X150 (ASPH-GRVD) S-130, D-210, 2S-175, 2D-420, 2D/2D2-850 PCN 70 F/A/X/T HIRL CL

RWY 12: MALSR. PAPI(P4R)—GA 3.0° TCH 72'. RVR-TR Tower.

RWY 30: MALSR. PAPI(P4L)—GA 3.0° TCH 71'. RVR-TR Thld dsplcd 945'. Tree.

RWY 08L-26R: H8600X150 (ASPH-GRVD) S-130, D-210, 2D-420, 2D/2D2-850 PCN 70 F/A/X/T HIRL CL

RWY 08L: REIL. PAPI(P4L)—GA 3.0° TCH 60'.

RWY 26R: REIL. PAPI(P4L)—GA 3.0° TCH 60'.

LAND AND HOLD-SHORT OPERATIONS

LDG RWY	HOLD-SHORT POINT	AVBL LDG DIST
RWY 09	12-30	9749
RWY 12	09-27	8100

RUNWAY DECLARED DISTANCE INFORMATION

RWY 08L: TORA-8600 TODA-8600 ASDA-8600 LDA-8600
RWY 08R: TORA-10506 TODA-10506 ASDA-10506 LDA-10506
RWY 09: TORA-13016 TODA-13016 ASDA-12755 LDA-11397
RWY 12: TORA-9355 TODA-9355 ASDA-8579 LDA-8579
RWY 26L: TORA-10506 TODA-10506 ASDA-10220 LDA-10220
RWY 26R: TORA-8600 TODA-8600 ASDA-8600 LDA-8600
RWY 27: TORA-13016 TODA-13016 ASDA-13016 LDA-12755
RWY 30: TORA-9355 TODA-9355 ASDA-8853 LDA-7913

SERVICE: S4 FUEL 100, JET A OX 1, 2, 3, 4

AIRPORT REMARKS: Attended continuously. CLOSED non-engine acft. Rwy 08L-26R CLOSED 0200-1100Z± when Rwy 08R-26L and Rwy 09-27 are in use. Rwy 12-30 CLOSED 0200-1100Z± when Rwy 08R-26L and Rwy 09-27 are in use. Birds on and in/ov arpt. PPR 3 hrs prior to all arr on the General Aviation Center (GAC) ramp 305-876-7550 ctc Ramp Ctl and upon arr on freq 131.600. Acft with wingspan greater than 78' are prohibited from entering the GAC ramp. Acft with a wingspan greater than 171' are prohibited from taxiing on Twy P, east of Twy U. PPR for inbd mil fits 100 NM on freq 130.5. All turbojet acft use distant NS ABTMT dep profile from all rwy exc A320, B727, B737-800, B767-400, and DC9 which should use close-in NS ABTMT profile. B757, heavy and super acft are not auth int dep for any rwy unless a prior notice is clsd or unusable. All medical emg arr, with the exception of air ambulance fits, must secure doors until ARFF is on scene. ASDE-X in use. Operate transponders with altitude reporting mode and ADS-B (if equipped) enabled on all airport surfaces. All diversion ctc frequency 130.5 upon arrival. Flight Notification Service (ADCUS) avbl. Ldg fee.

AIRPORT MANAGER: 305-876-7077

WEATHER DATA SOURCES: ASOS 119.15 (305) 870-0235. TDWR.

COMMUNICATIONS: D-ATIS ARR 119.15 (305) 869-5445 D-ATIS DEP 133.675 (305) 869-5446 UNICOM 123.0

Ⓡ APP CON 124.85 (270°-089°) 120.5 (090°-269°) 125.75 (270°-089°)

TOWER 118.3 (270°-089°) 123.9 (090°-269°) GND CON 121.8 (Rwy 8L, 8R, 12, 26L, 26R) 127.5 (Rwy 09, 27, 30)

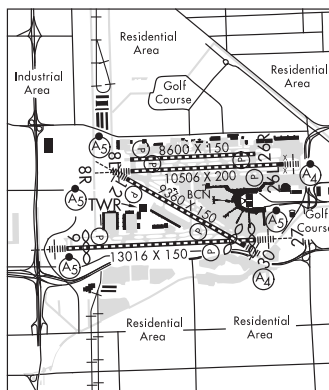
CLNC DEL 135.35 RAMP CTL 120.35

Ⓡ DEP CON 119.45 (270°-089°) 125.5 (090°-269°)

CPDLC (LOGON KUSA)

PDC

AIRSPACE: CLASS B See VFR Terminal Area Chart.



CONTINUED ON NEXT PAGE

CONTINUED FROM PRECEDING PAGE

RADIO AIDS TO NAVIGATION: NOTAM FILE MIA.

DOLPHIN (H) VORTAC 113.9 DHP Chan 86 N25°48.00' W80°20.94' 099° 3.2 NM to fld. 6/4W.

TACAN AZIMUTH unusable:

055°-065° byd 35 NM blo 3,000'

185°-195° byd 23 NM

226°-236° byd 35 NM

DME unusable:

055°-065° byd 35 NM blo 3,000'

LOC/DME 109.3 I-ROY Chan 30 Rwy 08L. ILS DME portion unusable byd 22° left of course (ctrln). LOC unusable byd 30° left of course and 25° right of course.

ILS/DME 110.3 I-MFA Chan 40 Rwy 08R. Class IT. DME unusable byd 23° right of course. LOC unusable byd 20° right of course.

ILS/DME 110.9 I-BUL Chan 46 Rwy 09. Class IA.

ILS/DME 108.9 I-GEM Chan 26 Rwy 12. Class IT. Glideslope unusable byd 5° right of course; byd 6° left of course.

ILS/DME 109.1 I-VIN Chan 28 Rwy 26L. Class IE.

LOC/DME 109.3 I-CNV Chan 30 Rwy 26R.

ILS 109.5 I-MIA Rwy 27. Class IT.

ILS/DME 111.7 I-DCX Chan 54 Rwy 30. Class IE.

MIAMI—OPA LOCKA EXEC (OPF)(KOPF) P (CG) 10 N UTC-5(-4DT) N25°54.45' W80°16.69'

MIAMI

8 B LRA NOTAM FILE OPF

H-8I, L-23C, A

IAP, AD

RWY 09L-27R: H8002X150 (ASPH-GRVD) S-120, D-249, 2S-175,

2D-484, 2D/2D2-1000 PCN 61 F/A/W/T HIRL

RWY 09L: MALSR. VASI(V4L)—GA 3.0° TCH 56'. Trees.

RWY 27R: MALSR. VASI(V4L)—GA 3.0° TCH 53'. Trees. Rgt tfc.

RWY 12-30: H6800X150 (ASPH-GRVD) S-120, D-249, 2D-484,

2D/2D2-1000 PCN 61 F/A/X/T HIRL

RWY 12: MALSR. PAPI(P4L)—GA 3.0° TCH 50'. Thld dsplcd 800'. Trees.

RWY 30: PAPI(P4L)—GA 3.0° TCH 50'. Tree.

RWY 09R-27L: H4309X100 (ASPH) S-96, D-154 PCN 36 F/A/Y/T

MIRL

RWY 09R: VASI(V4L)—GA 3.0° TCH 26'. Pole. Rgt tfc.

RWY 27L: PAPI(P4L)—GA 3.0° TCH 50'. Trees.

RUNWAY DECLARED DISTANCE INFORMATION

RWY 09L:TORA-8002 TODA-8202 ASDA-8202 LDA-8002

RWY 09R:TORA-4306 TODA-4306 ASDA-4306 LDA-4306

RWY 12: TORA-6800 TODA-7800 ASDA-7000 LDA-6000

RWY 27L:TORA-4306 TODA-4306 ASDA-4306 LDA-4306

RWY 27R:TORA-8002 TODA-8202 ASDA-8202 LDA-8002

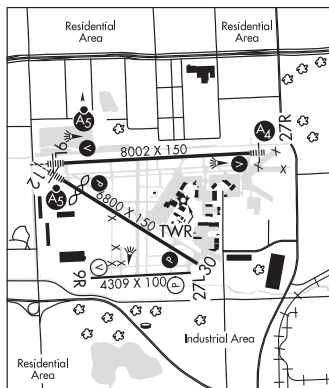
RWY 30: TORA-6800 TODA-7000 ASDA-7000 LDA-6800

SERVICE: S4 **FUEL** 100LL, JET A **OX** 1, 2, 3, 4 **LGT** When ATCT clsd ACTVT MALSR Rwy 12; PAPI Rwy 12 and 30; HIRL Rwy 12-30—CTAF. 30 min PPR to req actvn of MALSR Rwy 09L; MALS Rwy 27R; VASI Rwy 09L and 27R; HIRL Rwy 09L-27R—305-869-1660 and CTAF. **MILITARY—FUEL** J5 (PPR CG) A+ (C305-687-8410). (NC-100LL, A) Contract fuel—305-685-4646. **FLUID** LHGX

AIRPORT REMARKS: Attended continuously. Rwy 09L-27R when ATCT clsd PPR—305-869-1660. Birds invof arpt. Dual tfc pats for hel and fixed wing acft in use Rwy 09R-27L. Acft with wingspans gtr than 117' are prohibited fm tbig on Twy P btn Twy H and Twy N8. Noise sensitive arpt. Flt T is ltd to acft 40,000 lbs max gross tkof wt and blw and only btn 1200-0400Z±. Specific tfc pats are published for hel and fixed wing tfc; compliance is mandatory. Obtain info fm ATCT or FBO or amgr; or req specific tfc pat instructions on initial ctc. Hel arr and dep avoid flying over parked or txy acft. All acft and vehicles shud rprt psns to ATC by using the sfc painted spot nrs on all exits to the ramp and non-movement areas. Vehicle lane xing Twy E to the fire stn is non-movement. Twy C and B south of Twy P are non-movement areas. Twy T btn Twy E and Twy T8 rcdcd spd rqrdr for acft wingspan more than 117'. Twy R btn Twy F and G rstrd to acft with wingspan less than 94'. Flt Notification Svc (ADCUS) avbl 1300-0400Z±.

AIRPORT MANAGER: 305-869-1662

WEATHER DATA SOURCES: ASOS 125.9 (305) 681-4063. LAWRS.



CONTINUED ON NEXT PAGE