

HOPEDALE INDUSTRIAL PARK (1B6) 3 SE UTC-5(-4DT) N42°06.39' W71°30.61'
269 NOTAM FILE BDR

NEW YORK
L-33C, 34J
IAP

RWY 18-36: H3172X90 (ASPH) S-12 LIRL 1.0% up N

RWY 18: Trees.

RWY 36: Thld dsplcd 110'. Trees.

SERVICE: S2 **FUEL** 100LL **LGT** Rwy lgts opr dusk-0300Z†.

AIRPORT REMARKS: Attended Mon-Fri dawn-dusk. Wildlife invof arpt. Emergency fuel only. Arpt clsd to tsnt acft SS-SR. Arpt clsd to tsnt student trng. Arpt clsd to jets and night lgds exc PPR call 508-478-1726. Rwy 18 two story house 27' AGL (291' MSL) located approximately 400' northwest rwy thld. Rwy 36 apch ratio 3:1 at displ thld.

AIRPORT MANAGER: 508-478-1726

COMMUNICATIONS: CTAF/UNICOM 122.8

Ⓡ **YANKEE APP/DEP CON** 119.0

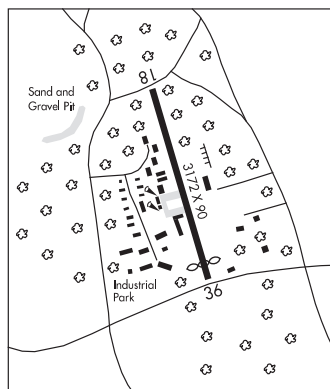
CLEARANCE DELIVERY PHONE: For CD ctc Yankee Apch at 860-386-3597.

RADIO AIDS TO NAVIGATION: NOTAM FILE BDR.

PUTNAM (H) WORW/DME 117.4 PUT Chan 121 N41°57.33'
W71°50.65' 073° 17.5 NM to fld. 652/14W.

DME unusable:

265°-301° byd 36 NM blo 3,000'



HYANNIS

CAPE COD GATEWAY (HYA)(KHYA) 1 N UTC-5(-4DT) N41°40.16' W70°16.82'

NEW YORK
H-10J, 11D, 12K, L-33D
IAP AD

54 B ARFF Index—See Remarks NOTAM FILE HYA MON Airport

RWY 06-24: H5425X150 (ASPH-GRVD) S-30, D-108

PCN 32 F/A/X/T HIRL

RWY 06: REIL. PAPI(P4L)—GA 3.0° TCH 37'. RVR-R Thld dsplcd 406'. Tree.

RWY 24: MALSF. PAPI(P4L)—GA 3.0° TCH 50'. RVR-T

RWY 15-33: H5253X150 (ASPH-GRVD) S-30, D-108

PCN 43 F/A/X/T HIRL

RWY 15: MALSR. RVR-T P-line.

RWY 33: PAPI(P4L)—GA 3.0° TCH 53'. RVR-R Thld dsplcd 150'.

LAND AND HOLD—SHORT OPERATIONS

LDG RWY	HOLD—SHORT POINT	AVBL LDG DIST
RWY 15	06-24	4150
RWY 24	15-33	4650

RUNWAY DECLARED DISTANCE INFORMATION

RWY 06:	TORA-5425	TODA-5425	ASDA-5425	LDA-5019
RWY 15:	TORA-5253	TODA-5253	ASDA-5253	LDA-5253
RWY 24:	TORA-5425	TODA-5425	ASDA-5425	LDA-5425
RWY 33:	TORA-5253	TODA-5253	ASDA-5253	LDA-5103

ARRESTING GEAR/SYSTEM

RWY 24: EMAS

SERVICE: S4 **FUEL** 100LL, JET A **LGT**ACTVT MALSR Rwy 15; MALSF Rwy 24; HIRL Rwy 06-24 and 15-33—CTAF.

NOISE: Arpt has noise abatement ctc arpt manager 508-778-7765. Touch and go opns prohibited between 0200-1059Z† unless prior approval by arpt manager.

AIRPORT REMARKS: Attended continuously. Birds, coyotes on and invof arpt. AVGAS unavailable between 0000Z† and 1100Z† daily. Call after hours 508-367-2140. Clsd to unscheduled air carrier ops with more than 9 passenger seats 0500-1100Z† exc 1 hr PPR arpt manager 508-778-7770. Be aware of hi-speed mil jet and heavy helicopter tfc vicinity of Joint Base Cape Cod. Do not confuse Joint Base Cape Cod, 10 NM west, with Barnstable Muni. Ant on tank 4,600' SE elev 208'; standpipe 7,050' N 236'; obstn lgtd. Class I, ARFF Index A. Index B ARFF equipment avbl during all scheduled air carrier opns. Twy B clsd to acft with wingspan greater than 118'. Twy B between Twy D and Rwy 06-24 clsd to acft with wingspan greater than 78'. Rwy 33 VGSi and glide path not coincident. Twy B from Rwy 33 to east ramp has soft shoulders and marked. All tran and general aviation pilots must ctc arpt ops on frequency 122.95 prior to engine shutdown for afld escort between 0300-1059Z. Ldg fee for all acft over 6000 lbs.

AIRPORT MANAGER: 508-775-2020

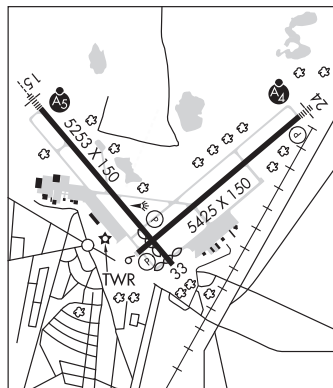
WEATHER DATA SOURCES: ASOS 123.8 (508) 862-2601. LAWRS.

COMMUNICATIONS: CTAF 119.5 ATIS 123.8 (508) 778-1143 UNICOM 122.95

Ⓡ **BOSTON CONSOLIDATED TRACON APP/DEP CON** 118.2 120.125 (1100-0400Z†) May 15-Sep 30, (1100-0300Z†) Oct 1-May 14.

Ⓡ **BOSTON CENTER APP/DEP CON** 128.75 (0400-1100Z†) May 15-Sep 30, (0300-1100Z†) Oct 1-May 14.

HYANNIS TOWER 119.5 (1100-0300Z†) **GND CON** 118.45 **CLNC DEL** 125.15



CONTINUED ON NEXT PAGE

NE, 17 JUN 2021 to 12 AUG 2021

CONTINUED FROM PRECEDING PAGE

AIRSPACE: CLASS D svc 1100–0300Z†; other times CLASS G.

RADIO AIDS TO NAVIGATION: NOTAM FILE MVY.

MARTHAS VINEYARD (L) VORW/DME 114.5 MVY Chan 92 N41°23.77' W70°36.76' 057° 22.2 NM to fld. 62/15W.

ILS/DME 108.95 I-BCU Chan 26(Y) Rwy 15. Class IB. Unmonitored when ATCT clsd.

ILS/DME 109.15 I-HYA Chan 28(Y) Rwy 24. Class IT. Unmonitored when ATCT clsd.

COMM/NAV/WEATHER REMARKS: Emerg frequency 121.5 not avbl at twr.

KATAMA AIRPARK (See EDGARTOWN on page 122)

LAURENCE G HANSCOM FLD (See BEDFORD on page 116)

LAWRENCE MUNI (LWM)(KLWM) 2 E UTC-5(-4DT) N42°43.02' W71°07.41'

148 B LRA NOTAM FILE LWM

RWY 05-23: H5001X100 (ASPH) S-45, D-62, 2D-110 HIRL

RWY 05: REIL. PAPI(P4R)—GA 3.0° TCH 55'.

RWY 23: REIL. PAPI(P4L)—GA 3.7° TCH 55'. Trees.

RWY 14-32: H3654X100 (ASPH) S-30, D-34, 2D-53 MIRL

0.7% up SE

RWY 32: REIL. PAPI(P4L)—GA 4.0° TCH 32'. Thld dsplcd 80'.

Trees.

SERVICE: S4 **FUEL** 100LL, JET A, A+ **LGT ACTVT** REIL Rwys 05, 23 and 32, PAPI Rwys 05, 23 and 32, HIRL Rwy 05-23, MIRL Rwy 14-32—CTAF.

AIRPORT REMARKS: Attended 1200Z†–0300Z†. Wildlife on and infv arpt. No tran touch and go ops Sat and Sun. Use reasonable efforts to maintain manufacturer's recommended best rate of climb. Clsd tfc pat initiate turn out at 700' AGL. Clsd tfc pat opr ltd to no more than 5 acft at a time. July 1st through August 31st, touch and go opr are prohibited before 1300Z† and after 1700Z†. No transition training or touch and go opr between 0200Z† and 1200Z†. Lgtd stack 296' MSL 1/2 mile NW AER 23. Hill 5400' SE and standpipe 7200' NE; lgt'd. Ldg Fee for acft registered to corporation only. Flight Notification Service (ADCUS) available.

AIRPORT MANAGER: 978-794-5880

WEATHER DATA SOURCES: ASOS (978) 687-8017 ASOS hrs 0300–1200Z†. LAWKS.

COMMUNICATIONS: CTAF 119.25 ATIS 126.75 UNICOM 122.8

® **BOSTON APP/DEP CON** 124.4

TOWER 119.25 (1200–0300Z†) **GND CON** 124.3 **CLNC DEL** 124.3 126.15 (When twr clsd)

AIRSPACE: CLASS D svc 1200–0300Z†; other times CLASS G.

RADIO AIDS TO NAVIGATION: NOTAM FILE LWM.

(L) **DME** 112.5 LWM Chan 72 N42°44.43' W71°05.69' 222° 1.9 NM to fld. 306/0W.

DME unusable:

160°–195° byd 23 NM blo 2,500'

ILS 111.7 I-LWM Rwy 05. Class IB. ILS unmt'd when ATCT clsd.

NEW YORK

COPTER

H-11D, 12K, L-33D

IAP, AD

