

CLIO CROP CARE (9W9) 2 SE UTC-5(-4DT) N34°33.69' W79°32.29'
192 TPA-792(600) NOTAM FILE AND

CHARLOTTE

RWY 05-23: 2598X125 (TURF)

RWY 05: Tree.

RWY 23: Tree.

SERVICE: S4

AIRPORT REMARKS: Attended Mon-Fri 1300Z†-dusk, Sat 1300-1700Z†.

AIRPORT MANAGER: 843-586-9225

COMMUNICATIONS: CTAF 122.9

CLEARANCE DELIVERY PHONE: For CD ctc Florence Apch at 843-669-5194, when Apch clsd ctc Jacksonville ARTCC at 904-845-1592.

COLLIERS N33°42.44' W82°09.72' NOTAM FILE AND.

ATLANTA

(H) **VORTAC** 113.9 IRQ Chan 86 108° 15.2 NM to Twin Lakes. 420/4W.

H-9B, 12G, L-24I

RCO 122.1R 113.9T (ANDERSON RADIO)

COLUMBIA

COLUMBIA METRO (CAE)(KCAE) 5 SW UTC-5(-4DT) N33°56.33' W81°07.17'

CHARLOTTE

236 B LRA Class I, ARFF Index B NOTAM FILE CAE MON Airport

H-9B, 12G, L-24I

RWY 11-29: H8601X150 (CONC-GRVD) S-72, D-225, 2S-175,

IAF, AD

2D-409, 2D/2D2-700 PCN 90 R/B/W/T HIRL CL

RWY 11: ALSF2. TDZL. PAPI(P4L)-GA 3.0° TCH 59'. RVR-TMR

RWY 29: MALSR. PAPI(P4L)-GA 3.0° TCH 57'. RVR-TMR 0.5% up.

RWY 05-23: H8001X150 (ASPH-CONC-GRVD) S-100, D-200, 2S-175,

2D-355, 2D/2D2-675 PCN 87 R/B/W/T HIRL

RWY 05: MALSR. PAPI(P4R)-GA 3.0° TCH 73'. RVR-T 0.4% down.

RWY 23: REIL. PAPI(P4L)-GA 3.0° TCH 69'. RVR-T Thld dsplcd

1000'. Tree.

RUNWAY DECLARED DISTANCE INFORMATION

RWY 05: TORA-8001 TODA-8001 ASDA-7001 LDA-7001

RWY 11: TORA-8601 TODA-8601 ASDA-8601 LDA-8601

RWY 23: TORA-8001 TODA-8001 ASDA-8001 LDA-7001

RWY 29: TORA-8601 TODA-8601 ASDA-8506 LDA-8506

SERVICE: S4 **FUEL** 100LL, JET A **OX** 1, 3 **LGT** Rwy 11 ALSF2 also operates as SSALR.

NOISE: Noise abatement procedure: no turns blo 1000 ft for turbine engine acft unless directed by ATC.

AIRPORT REMARKS: Attended continuously. Acft ldg with explosives obtain PPR from arpt ops 803-822-5050. Rwy 05-23 center 75' is conc, entire length of rwy. Due to proximity and rwy alignment aircrews have mistaken CUB (Rwy 13-31) for CAE (Rwy 11-29) which is 6 miles northeast. Helipad H1 located north of Taxilane E, east of Twy E3. Fee for coml acft over 15,000 lbs. Opr of ultralight veh prohibited. Sports complex with numerous flood lgts aprx 6500' from AER 11. Rwy 05 200' x 200' blast pad. Rwy 11 220' x 400' blast pad, Rwy 29 220' x 400' blast pad.

AIRPORT MANAGER: (803) 822-5017

WEATHER DATA SOURCES: ASOS 120.15 (803) 822-4168. LLWAS.

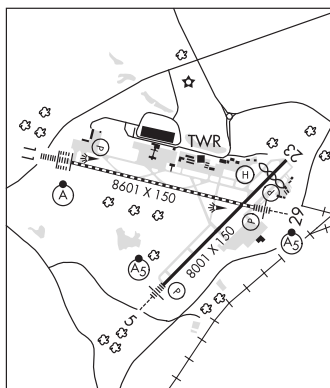
COMMUNICATIONS: ATIS 120.15 UNICOM 122.95

COLUMBIA RCO 122.1R 114.7T (ANDERSON RADIO)

Ⓡ **COLUMBIA APP/DEP CON** 124.15 (110°-289°) 133.4 (290°-109°)

TOWER 119.5 **GND CON** 121.9 **CLNC DEL** 119.75

AIRSPACE: CLASS C svc ctc **APP CON**.



CONTINUED ON NEXT PAGE

CONTINUED FROM PRECEDING PAGE

RADIO AIDS TO NAVIGATION: NOTAM FILE CAE.

(H) VORTAC 114.7 CAE Chan 94 N33°51.44' W81°03.23' 328° 5.9 NM to fld. 404/2W.

VOR unusable:

000°-073° byd 35 NM blo 6,000'

200°-234° byd 12 NM blo 3,000'

235°-245° byd 12 NM blo 6,000'

246°-289° byd 12 NM blo 3,000'

290°-305° byd 12 NM blo 2,400'

306°-344° byd 30 NM

345°-359° byd 10 NM blo 5,000'

MURRY NDB (LOMW) 362 CA N33°58.03' W81°14.69' 112° 6.5 NM to fld. 326/7W.

ILS 108.95 I-GJC Rwy 05. Class IE.

ILS 110.3 I-CAE Rwy 11. Class IIIE. LOM MURRY NDB.

ILS 108.3 I-VYK Rwy 29. Class IE.

HELIPAD H1: H50X50 (CONC) PERIMETER LGTS

JIM HAMILTON L B OWENS (CUB)(KCUB) P (AR) 2 S UTC-5(-4DT) N33°58.23' W80°59.72'

CHARLOTTE

193 B TPA—See Remarks NOTAM FILE CUB

H-9B, 12G, L-24I

RWY 13-31: H5011X75 (ASPH) S-44.5, D-66 PCN 15 F/B/X/T MIRL

IAP

RWY 13: REIL. PAPI(P2L)—GA 4.0° TCH 30'. Tree. Rgt tfc.

RWY 31: REIL. PAPI(P2R)—GA 3.0° TCH 20'. Thld dspcd 391'. Tree.

RUNWAY DECLARED DISTANCE INFORMATION

RWY 13: TORA-4999 TODA-4999 ASDA-4999 LDA-4999

RWY 31: TORA-4999 TODA-4999 ASDA-4999 LDA-4599

SERVICE: S4 FUEL 100LL, JET A OX 1, 2 LGT ACTIVATE MIRL Rwy 13-31 and REIL Rwy 13 and 31—CTAF. PAPI Rwy 13 unusable byd 8 deg right. **MILITARY—FUEL A+** (1100-0300Z±, C803-771-7915, OT C803-771-7915.) (NC-100LL, A)

NOISE: Avoid noise sensitive area north of arpt blo 1500 ft. No northbound dep turns either rwy blo 1500 ft.

AIRPORT REMARKS: Attended 1100-0300Z±. For svc after hrs call 803-771-7915. Due to proximity and rwy alignment, aircrews have mistaken CAE Rwy11-29 for CUB Rwy 13-31 which is 6 miles SW. TPA: 807' AGL/1000' MSL. Railroad switching yard parallel to Rwy 13-31. Rwy to twy separation is 206'. The separation design criterion is not fully met for acct 12,500 lbs and larger.

AIRPORT MANAGER: 803-771-7915

WEATHER DATA SOURCES: ASOS 118.675 (803) 929-0665.

COMMUNICATIONS: CTAF/UNICOM 123.075

Ⓜ COLUMBIA APP/DEP CON 133.4

CLNC DEL 124.4

CLEARANCE DELIVERY PHONE: For CD ctc Columbia Apch at 803-822-5242 or 803-822-5040.

RADIO AIDS TO NAVIGATION: NOTAM FILE CAE.

COLUMBIA (H) VORTAC 114.7 CAE Chan 94 N33°51.44' W81°03.23' 025° 7.4 NM to fld. 404/2W.

VOR unusable:

000°-073° byd 35 NM blo 6,000'

200°-234° byd 12 NM blo 3,000'

235°-245° byd 12 NM blo 6,000'

246°-289° byd 12 NM blo 3,000'

290°-305° byd 12 NM blo 2,400'

306°-344° byd 30 NM

345°-359° byd 10 NM blo 5,000'

LOC/DME 110.9 I-CUB Chan 46 Rwy 31.

ASR

