

CHATTANOOGA

DALLAS BAY SKY PARK (1A0) 11 N UTC-5(-4DT) N35°11.25' W85°10.66'

ATLANTA
L-25A

690 B NOTAM FILE BNA

RWY 05-23: H3025X50 (ASPH) LIRL

RWY 05: Thld dsplcd 200'. Tree.

RWY 23: Thld dsplcd 700'. Trees. Rgt tfc.

SERVICE: FUEL 100LL LGT ACTVT LIRL Rwy 05-23—CTAF. Rotg bcn ACTVTD with LIRL—CTAF.

AIRPORT REMARKS: Attended Mon-Fri irregularly, Sat 1400-2300Z†, Sun 1800-2300Z†. Rwy 05-23 trees both sides of rwy violate 7:1 transition sfc. Bldg both sides of rwy N end penetrate pri sfc.

AIRPORT MANAGER: 423-322-0521

COMMUNICATIONS: CTAF/UNICOM 123.0

CLEARANCE DELIVERY PHONE: For CD ctc Chattanooga Apch at 423-855-6478, when Apch clsd ctc Atlanta ARTCC at 770-210-7692.

RADIO AIDS TO NAVIGATION: NOTAM FILE CHA.

CHOO CHOO (H) VORTACW 115.8 GQO Chan 105 N34°57.68' W85°09.20' 354° 13.6 NM to fld. 1014/1E.

TACAN AZIMUTH unusable:

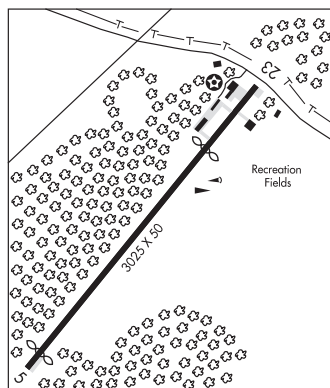
075°-110°

260°-290°

340°-350°. TACAN AZIMUTH OTS indef

TACAN DME unusable:

260°-290°



LOVELL FLD (CHA)(KCHA) P (ARNG) 5 E UTC-5(-4DT) N35°02.11' W85°12.21'

ATLANTA
H-9A, 12G, L-25A
IAP, AD

683 B LRA Class I, ARFF Index B NOTAM FILE CHA

RWY 02-20: H7400X150 (ASPH-GRVD) S-120, D-164, 2S-175, 2D-265 PCN 42 F/A/X/U HIRL CL

RWY 02: MALSR. PAPI(P4R)—GA 3.0° TCH 71'. RVR-TR

RWY 20: ALSF2. TDZL. RVR-TR Railroad.

RWY 15-33: H5575X150 (ASPH-GRVD) S-120, D-164, 2S-175, 2D-265 PCN 14 F/A/Y/U MIRL

RWY 15: PAPI(P4L)—GA 3.0° TCH 45'. Thld dsplcd 106'. Trees.

RWY 33: PAPI(P4L)—GA 3.0° TCH 40'. Thld dsplcd 575'. Trees.

RUNWAY DECLARED DISTANCE INFORMATION

RWY 02: TORA-7400 TODA-7400 ASDA-7100 LDA-7100

RWY 15: TORA-5575 TODA-5575 ASDA-5575 LDA-5470

RWY 20: TORA-7400 TODA-7400 ASDA-7400 LDA-7400

RWY 33: TORA-5470 TODA-5470 ASDA-5470 LDA-5000

SERVICE: S4 FUEL 100LL, JET A OX 3, 4 LGT When ATCT CLOSED ACTVT MALSR Rwy 02; TDZL Rwy 20; cntrln lgts Rwy 02-20; PAPI Rwy 02; HIRL Rwy 02-20—CTAF. When ATCT clsd MIRL Rwy 15-33 unavbl; ALSF2 Rwy 20 on med instt. **MILITARY—FUEL A+** (C423-855-2299. 30 min PN rqr.) (NC-100LL, A)

AIRPORT REMARKS: Attended continuously. Birds invof arpt. Tnst acft avoid scy zone wi 300 ft of trml bldg. Hold short instr read back rqrd. Flight Notification Service (ADCUS) available.

AIRPORT MANAGER: 423-855-2200

WEATHER DATA SOURCES: ASOS 119.85 (423) 499-5973. LLWAS.

COMMUNICATIONS: CTAF 118.3 ATIS 119.85 UNICOM 122.95

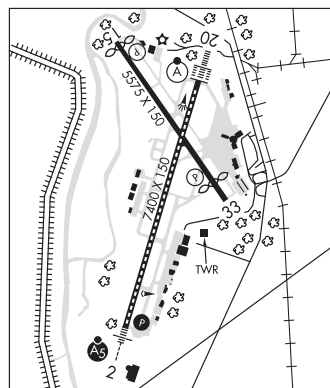
CHATTANOOGA RCO 122.2 (NASHVILLE RADIO)

Ⓡ CHATTANOOGA APP/DEP CON 119.2 (200°-020°) 125.1 (021°-199°) (1100-0450Z†)

ATLANTA CENTER APP/DEP CON 132.05 (0450-1100Z†)

CHATTANOOGA TOWER 118.3 (1100-0450Z†) GND CON 121.7 CLNC DEL 120.95

CLEARANCE DELIVERY PHONE: For CD if una to ctc on FSS freq, ctc Chattanooga Apch at 423-855-6478, when Apch clsd ctc Atlanta ARTCC at 770-210-7692.



CONTINUED ON NEXT PAGE

CONTINUED FROM PRECEDING PAGE

AIRSPACE: CLASS C svc ctc APP CON svc 1100-0450Z±; other times CLASS E.

RADIO AIDS TO NAVIGATION: NOTAM FILE CHA.

CHOO CHOO (H) VORTACW 115.8 GQO Chan 105 N34°57.68' W85°09.20' 330° 5.1 NM to fld. 1014/1E.

TACAN AZIMUTH unusable:

075°-110°

260°-290°

340°-350°. TACAN AZIMUTH OTS indef

TACAN DME unusable:

260°-290°

DAISY NDB (HW) 341 CQN N35°09.99' W85°09.44' 198° 8.2 NM to fld. 936/2W. NDB unmonitored when ATCT closed.

ILS 108.3 I-CGW Rwy 02. Class IB. ILS unmttd when ATCT clsd. Glideslope unusable byd 4° left of course; byd 7° right of course.

ILS 109.5 I-CHA Rwy 20. Class IIE. Unmonitored when ATCT closed.

ASR (1100-0450Z±)

CHATTANOOGA N35°02.12' W85°12.23'
RCO 122.2 (NASHVILLE RADIO)

ATLANTA
L-25A

CHILHOWEE (See BENTON on page 390)

CHOO CHOO N34°57.68' W85°09.20' NOTAM FILE CHA.
(H) **VORTACW** 115.8 GQO Chan 105 330° 5.1 NM to Lovell Fld. 1014/1E.

ATLANTA
H-9A, 12G, L-25A

TACAN AZIMUTH unusable:

075°-110°

260°-290°

340°-350°. TACAN AZIMUTH OTS indef

TACAN DME unusable:

260°-290°

CLARKSVILLE

OUTLAW FLD (CKV)(KCKV) 6 NW UTC-6(-5DT) N36°37.31' W87°24.90'

ST LOUIS
H-6K, 9A, L-16I
IAP

550 B TPA-1600(1050) NOTAM FILE CKV

RWY 17-35: H5999X100 (ASPH) S-60, D-90 PCN 27 R/C/X/T MIRL

RWY 17: REIL. PAPI(P2L)—GA 3.0° TCH 22'. Trees.

RWY 35: MALS. PAPI(P2L)—GA 3.0° TCH 50'. Trees. Rgt tfc.

RWY 05-23: H4004X100 (ASPH) S-40, D-60

RWY 05: Thld dspicd 402'. Tree. Rgt tfc.

RWY 23: Thld dspicd 503'. Tree.

RUNWAY DECLARED DISTANCE INFORMATION

RWY 05: TORA-4004 TODA-4004 ASDA-3501 LDA-3099

RWY 23: TORA-4004 TODA-4004 ASDA-3602 LDA-3099

SERVICE: S4 FUEL 100LL, JET A+ LGT ACTIVATE MALS Rwy 35;

REIL Rwy 17—CTAF. PAPI Rwy 17 unusable beyond 9° right of centerline.

AIRPORT REMARKS: Attended Mon-Fri 1300-0000Z±, Sat-Sun

1400-2200Z±. Arpt unattended Christmas, Thanksgiving and New Years. Fuel: Aft hr svc—931-217-8765. Parachute Jumping. Deer on and invof arpt. Extv mil and civ flt trng within arpt area. Rwy 05-23 markings peeling and faded.

AIRPORT MANAGER: 931-431-2080

WEATHER DATA SOURCES: ASOS 134.575 (931) 431-3045.

COMMUNICATIONS: CTAF/UNICOM 122.8

Ⓡ **CAMPBELL APP/DEP CON** 134.35

CLEARANCE DELIVERY PHONE: For CD when una via freq ctc Campbell Apch at 270-798-6441.

AIRSPACE: CLASS D.

RADIO AIDS TO NAVIGATION: NOTAM FILE CKV.

CLARKSVILLE (T) VORW/DME 110.6 CKV Chan 43 N36°37.32' W87°24.76' at fld. 538/1W.

VOR portion unusable:

090°-110° byd 20 NM

SNUFF NDB (LOMW) 335 CK N36°31.62' W87°23.21' 348° 5.8 NM to fld. 501/1W.

LOC 111.7 I-CKV Rwy 35. LOM SNUFF NDB. NDB unusable byd 10 NM.

