

PAONIA

NORTH FORK VALLEY (7V2) 3 SW UTC-7(-6DT) N38°49.88' W107°38.75'

DENVER
L-9E

5798 TPA—6598(800) NOTAM FILE DEN

RWY 05-23: H4500X60 (ASPH) S-21 HIRL

RWY 05: PAPI(P2L).

RWY 23: PAPI(P2L).

SERVICE: S4 FUEL 100LL LGT ACTIVATE HIRL Rwy 05-23, PAPI Rwy 05 and Rwy 23—CTAF.

AIRPORT REMARKS: Attended Mon-Fri 1500-0100Z†, Sat-Sun irregularly. 24 hr self serve fuel avbl. Rwy 05-23 has -50' to 75' terrain droppoff on both sides at various locations the entire length of rwy. Rwy 23 has -60' drop off at thld and within 30' of centerline at various locations.

AIRPORT MANAGER: 970-527-3345

COMMUNICATIONS: CTAF/UNICOM 122.7

CLEARANCE DELIVERY PHONE: For CD ctc Denver ARTCC at 303-651-4257.

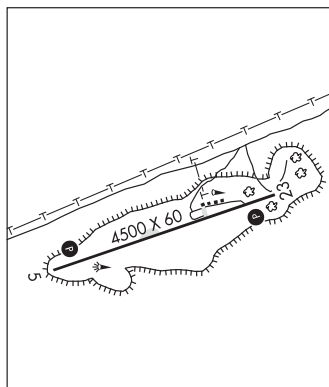
RADIO AIDS TO NAVIGATION: NOTAM FILE DEN.

BLUE MESA (H) VOR/DME 114.9 HBU Chan 96 N38°27.13'

W107°02.38' 295° 36.4 NM to fld. 8740/14E.

DME portion unusable:

315°-325° byd 27 NM blo 17,500'



PERRY STOKES (See TRINIDAD on page 300)

PETEY N38°41.66' W104°42.98' NOTAM FILE COS.

DENVER
L-10F

NDB (MHW/L0M) 407 CO 358° 6.7 NM to City Of Colorado Springs Muni. 5574/8E.

PLATTE VALLEY AIRPARK (See HUDSON on page 285)

PUEBLO MEML (PUB)(KPUB) 5 E UTC-7(-6DT) N38°17.40' W104°29.88'

DENVER
H-5A, L-10F
IAP, AD

4729 B Class I, ARFF Index A NOTAM FILE PUB

RWY 08R-26L: H10498X150 (ASPH-GRVD) S-75, D-170, 2D-250

HIRL

RWY 08R: MALSR. PAPI(P4L)—GA 3.0° TCH 63'. Rgt tfc.

RWY 26L: REIL. PAPI(P4L)—GA 3.0° TCH 62'. 0.4 % up..

RWY 17-35: H8310X150 (ASPH-GRVD) S-93, D-110, 2S-140, 2D-170 MIRL

RWY 17: REIL. PAPI(P4L)—GA 3.0° TCH 54'. 1.0% down..

RWY 35: REIL. PAPI(P4L)—GA 3.0° TCH 48'. 0.9% up..

RWY 08L-26R: H4690X75 (ASPH-GRVD) S-20, 2S-175 MIRL

RWY 08L: REIL. PAPI(P4L)—GA 3.0° TCH 40'.

RWY 26R: REIL. PAPI(P4L)—GA 3.0° TCH 40'.

LAND AND HOLD—SHORT OPERATIONS

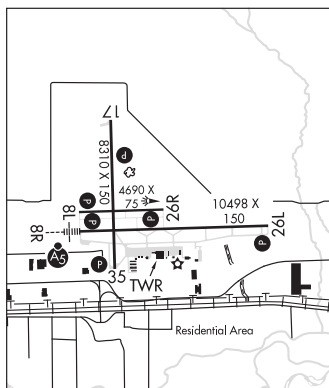
LDG RWY	HOLD—SHORT POINT	AVBL LDG DIST
RWY 17	08L-26R	4700
RWY 26L	17-35	8300

RUNWAY DECLARED DISTANCE INFORMATION

RWY 08L:	TORA-4690	TODA-4690	ASDA-4690	LDA-4690
RWY 08R: <td>TORA-10496</td> <td>TODA-10496</td> <td>ASDA-10496</td> <td>LDA-10496</td>	TORA-10496	TODA-10496	ASDA-10496	LDA-10496
RWY 17: <td>TORA-8308</td> <td>TODA-8308</td> <td>ASDA-8308</td> <td>LDA-8308</td>	TORA-8308	TODA-8308	ASDA-8308	LDA-8308
RWY 26L: <td>TORA-10496</td> <td>TODA-10496</td> <td>ASDA-10496</td> <td>LDA-10496</td>	TORA-10496	TODA-10496	ASDA-10496	LDA-10496
RWY 26R: <td>TORA-4690</td> <td>TODA-4690</td> <td>ASDA-4690</td> <td>LDA-4690</td>	TORA-4690	TODA-4690	ASDA-4690	LDA-4690
RWY 35: <td>TORA-8308</td> <td>TODA-8308</td> <td>ASDA-8308</td> <td>LDA-8308</td>	TORA-8308	TODA-8308	ASDA-8308	LDA-8308

SERVICE: S4 FUEL 100LL, JET A OX3 LGT When twr clsd ACTIVATE MALSR Rwy 08R; REIL Rwy 08L, Rwy 17, Rwy 26R, Rwy 26L, Rwy 35; PAPI Rwy 08R, Rwy 08L, Rwy 17, Rwy 26R, Rwy 26L, Rwy 35; HIRL Rwy 08R-26L; MIRL Rwy 17-35, Rwy 08L-26R—CTAF.

AIRPORT REMARKS: Attended 1200-0500Z†. Conditions not monitored 0500-1200Z†. For fuel after hrs call 719-948-3316 or use 100LL self-svc. Be alert, intensive USAF student training invof Colorado Springs and Pueblo Colorado. Rwy 08L-26R avbl to acft under 20,000 lbs during dalg and night hrs. Twy A between Twy A2 and A6 50' wide. High volume training DA-20 acft Mon-Fri SR-SS. Overhead pat during training. Extensive use of training area 12-28 DME north to southwest of arpt 500' AGL to 8500' MSL Mon-Fri SR-SS. See Special Notices—USAF 306 FTG Flight Training Areas, Vicinity of Colorado Springs and Pueblo Colorado.



CONTINUED ON NEXT PAGE

CONTINUED FROM PRECEDING PAGE

AIRPORT MANAGER: 719-553-2744

WEATHER DATA SOURCES: ASOS (719) 948-2803

COMMUNICATIONS: CTAF 119.1 ATIS 125.25 UNICOM 122.95

RCO 122.2 (DENVER RADIO)

Ⓡ DENVER APP/DEP CON 120.1 (1300-0500Z±)

Ⓡ DENVER CENTER APP/DEP CON 128.375 (0500-1300Z±)

TOWER 119.1 (1300-0500Z±) GND CON 121.9 CLNC DEL 120.9

CLEARANCE DELIVERY PHONE: For CD ctc Pueblo Apch at 303-342-1916, when Apch clsd ctc Denver ARTCC at 303-651-4257.

AIRSPACE: CLASS D svc 1300-0500Z±; other times CLASS E.

RADIO AIDS TO NAVIGATION: NOTAM FILE PUB.

(H) VORTACW 116.7 PUB Chan 114 N38°17.66' W104°25.77' 257° 3.2 NM to fld. 4756/8E.

ILS 109.5 I-PUB Rwy 08R. Class IE. Unmonitored when ATCT closed.

ILS 108.3 I-TFR Rwy 26L. Class IA. Unmonitored when ATCT closed.

RANGLEY (4V0) 2 E UTC-7(-6DT) N40°05.64' W108°45.78'

CHEYENNE

5278 B NOTAM FILE DEN

H-3E, L-9D, 11E

RWY 07-25: H6409X75 (ASPH) S-28, D-28 PCN 28 F/C/X/T MIRL

IAF

RWY 07: REIL. PAPI(P2L)—GA 3.0° TCH 40'. Road. Rgt tfc.

RWY 25: REIL. Road.

SERVICE: FUEL 100LL LGT ACTIVATE REIL Rwy 07 and Rwy 25,

MIRL Rwy 07-25—CTAF, PAPI Rwy 07 opr 24 hrs.

AIRPORT REMARKS: Attended 1500-0000Z±. Self-svc fuel avbl with credit card. For svc call 970-675-2316. Minor emerg svcs upon req.

Monitor 123.5 for trng ops at arpt. Three flashing haz bcns outline obst hills east. Rwy 07-25 shoulders soft when wet. Deer periodically on and invof arpt. Rwy 07 has +8' fence line 520' from thld obst, +66' trees 2500' from thld 600' left of cntrln. Rwy 25 has +10' fence line 615' from thld obst. Twy marked with blue reflectors. Cold temperature airport. Altitude correction required at or below -18C.

AIRPORT MANAGER: 970-675-2316

WEATHER DATA SOURCES: AWOS-3PT 119.025 (970) 675-2339.

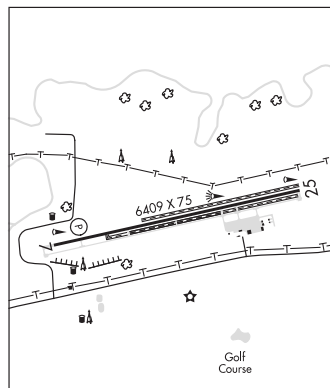
COMMUNICATIONS: CTAF/UNICOM 122.8

RCO 122.650 (DENVER RADIO)

CLEARANCE DELIVERY PHONE: For CD if una to ctc on FSS freq, ctc Denver ARTCC at 303-651-4257.

RADIO AIDS TO NAVIGATION: NOTAM FILE DEN.

MEEKER (H) VORW/DME 115.2 EKR Chan 99 N40°04.05' W107°55.50' 258° 38.6 NM to fld. 7630/15E.



RANGLEY

KENNEY RESERVOIR SPB (13R) 5 NE UTC-7(-6DT) N40°06.92' W108°42.49'

CHEYENNE

5329 NOTAM FILE DEN

WATERWAY 01W-19W: 6800X300 (WATER)

SEAPLANE REMARKS: CTN: Arpt unatndd, use at your own risk. Rwy 01W-19W srndd by high trrn and cliffs, some abv +750 ft. Arr acft must have performed and dcmted an aquatic nusiance species insp prior ro arr. Please adz priod to arr, 970-675-5055. No svcs avbl; nearest fac with svcs is 4V0—Rangley arpt, 3NM WSW. Buoys may be present seasonally near E shore to id no wake areas. Apch sfc data not ckd.

AIRPORT MANAGER: 970-675-5055

COMMUNICATIONS: CTAF 122.9

COMM/NAV/WEATHER REMARKS: CTAF 122.8 rcmdd to avoid tfc conflict with 4V0 tfc.

RED TABLE N39°26.36' W106°53.68' NOTAM FILE DEN.

DENVER

(H) VORW/DME 113.0 DBL Chan 77 163° 13.1 NM to Aspen-Pitkin Co/Sardy fld. 11800/12E.

H-3E, L-9E