

CONTINUED FROM PRECEDING PAGE

VOR TEST FACILITY (VOT) 109.0

RADIO AIDS TO NAVIGATION: NOTAM FILE PRC.

(H) VORTACW 115.6 PXR Chan 103 N33°25.98' W111°58.21' 260° 2.1 NM to fld. 1184/12E.

VOR unusable:

345°-360° byd 33 NM blo 10,000'

TACAN AZIMUTH & DME unusable:

345°-360° byd 33 NM blo 11,000'

VORTAC unusable:

015°-034° byd 33 NM blo 10,000'

090°-100° byd 15 NM blo 8,000'

185°-190° byd 30 NM blo 8,000'

185°-190° byd 38 NM blo 9,000'

190°-230° byd 20 NM blo 10,000'

345°-034° byd 10 NM blo 6,000'

345°-034° byd 20 NM blo 8,000'

360°-015° byd 33 NM blo 11,000'

DME unusable:

215°-315°

ILS/DME 111.5 I-PHX Chan 52 Rwy 07L. Class IE.

ILS/DME 110.75 I-AHA Chan 44(Y) Rwy 07R. Class ID. DME also serves RIG ILS Rwy 25L.

ILS/DME 111.75 I-SYQ Chan 54(Y) Rwy 08. Class IB. LOC unusable 25° left of course. Autopilot coupled apch not applicable blw 1,307' MSL (0.3 NM).

ILS/DME 110.75 I-RJG Chan 44(Y) Rwy 25L. Class IT. DME also serves AHA ILS Rwy 7R.

ILS/DME 111.75 I-CWJ Chan 54(Y) Rwy 26. Class IB.

PHOENIX-MESA GATEWAY (IWA)(KIWA) 20 SE UTC-7 N33°18.47' W111°39.33' 1384 B TPA—See Remarks Class I, ARFF Index C NOTAM FILE IWA MON Airport

PHOENIX H-4J, L-5B, A IAP, AD

RWY 12R-30L: H10401X150 (CONC) S-55, D-95, 2S-120, 2D-185,

2D/2D2-550 PCN 71 R/C/W/T MIRL

RWY 12R: PAPI(P4L)—GA 3.0° TCH 60'. Rgt tfc. 0.3% up.

RWY 30L: PAPI(P4L)—GA 3.0° TCH 60'. 0.4% down.

RWY 12C-30C: H10201X150 (ASPH-CONC) S-55, D-95, 2S-120,

2D-185, 2D/2D2-550 PCN 26 R/D/W/T HIRL

RWY 12C: PAPI(P4L)—GA 3.0° TCH 50'. 0.3% up.

RWY 30C: PAPI(P4L)—GA 3.0° TCH 49'. 0.3% down.

RWY 12L-30R: H9300X150 (CONC) S-75, D-210, 2S-175, 2D-590,

2D/2D2-850 PCN 88 R/C/W/T HIRL

RWY 12L: REIL. PAPI(P4L)—GA 3.0° TCH 74'. 0.3% up.

RWY 30R: REIL. PAPI(P4L)—GA 3.0° TCH 75'. Rgt tfc. 0.3% down.

RUNWAY DECLARED DISTANCE INFORMATION

RWY 12C:TORA-10201 TODA-10201 ASDA-10201 LDA-10201

RWY 12L:TORA-9300 TODA-9300 ASDA-9300 LDA-9300

RWY 12R:TORA-10401 TODA-10401 ASDA-10401 LDA-10401

RWY 30C:TORA-10201 TODA-10201 ASDA-10201 LDA-10201

RWY 30L:TORA-10401 TODA-10401 ASDA-10401 LDA-10401

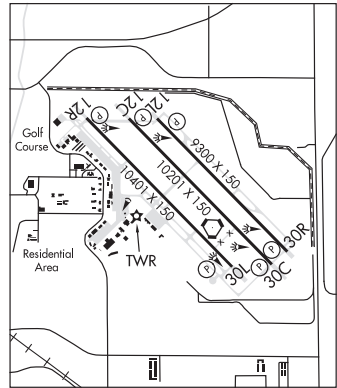
RWY 30R:TORA-9300 TODA-9300 ASDA-9300 LDA-9300

SERVICE: S1 FUEL 100LL, JET A OX 3, 4 LGT For REIL Rwy 12L and Rwy 30R ctc ATCT. After ATCT clsd, arpt lghts remain on.

NOISE: Voluntary noise abatement procedures in effect. Avoid low overflight of noise sensitive areas surrounding arpt. For noise abatement information ctc arpt 480-988-7637 between 1300-0500Z or 480-988-7700 or 129.875.

AIRPORT REMARKS: Attended continuously. Fuel avbl continuously ctc 480-988-7700 or 129.875. Be alert for crop dusting activity infov arpt. Be alert for crop dusting activity at or below 2000' MSL between 2 and 3 miles on apch for Rwy 30R, Rwy 30L and Rwy 30C. Occasional wildlife infov arpt. Rwy 12C first 1000' conc, Rwy 30C first 3500' conc, remaining center portion asph. All non-emergency acft ops of AV-8 model acft, all variations, limited to Rwy 12L-30R. 24-hr prior permission req for unscheduled air carrier ops with more than 30 passenger seats, call arpt ops. Large/heavy acft taxi with inboard engines only. Twy W between Twy H and Twy V rstd to acft with wingspan less than 135'. Twy T accessible for acft with wingspan between 119' and 170' with wing walkers from Twy W south of Twy V. 7' chain link fence on southern portion of middle ramp. Twy Y rstd to acft with wingspan less than 79'. TPA—Fixed Wing 2602(1218), Jet 3102(1718), Rotorcraft 2102(718). No ldg fee for U.S. Government owned, non-revenue and flight training acft up to 12,500 lbs.

AIRPORT MANAGER: (480) 988-7708



CONTINUED ON NEXT PAGE

CONTINUED FROM PRECEDING PAGE

WEATHER DATA SOURCES: AWOS-3 133.5 (480) 988-9428. AWOS is available from 0700-1200Z† (mst) on 133.5, or 24 hrs via phone: 480-988-9428.

COMMUNICATIONS: CTAF 120.6 ATIS 133.5 (1200-0700Z)

® PHOENIX APP/DEP CON 124.9

GATEWAY TOWER 120.6 1200-0700Z **GND CON** 128.25

CLNC DEL 135.05

CLEARANCE DELIVERY PHONE: For CD when ATCT clsd, ctc Phoenix Apch at 602-306-2565.

AIRSPACE: CLASS D svc 1200-0700Z; other times CLASS G.

RADIO AIDS TO NAVIGATION: NOTAM FILE IWA.

WILLIE (L) VORTACW 113.3 IWA Chan 80 N33°18.19' W111°39.09' at fld. 1367/13E.

VOR unusable:

300°-320° byd 25 NM blo 7,500'

320°-300° byd 20 NM blo 7,500'

TACAN AZIMUTH unusable:

020°-055° byd 30 NM blo 12,000'

150°-195° byd 20 NM blo 7,500'

DME unusable:

020°-055° byd 30 NM blo 12,000'

150°-195° byd 20 NM blo 7,500'

ILS 110.15 I-IWA Rwy 30C. Class IE. LOC unusable byd 25° left and right of course. Unmonitored 1200-1900Z.

COMM/NAV/WEATHER REMARKS: AWOS is avbl from 0700-1200Z on 133.5, or 24 hrs via phone 480-988-9428.

PHOENIX GOODYEAR (See GOODYEAR on page 47)

PHOENIX N33°25.98' W111°58.21' NOTAM FILE PRC.

PHOENIX

(H) **VORTAC** 115.6 PXR Chan 103 260° 2.1 NM to Phoenix Sky Harbor Intl. 1184/12E.

H-4J, L-5B, A

VOR unusable:

345°-360° byd 33 NM blo 10,000'

TACAN AZIMUTH & DME unusable:

345°-360° byd 33 NM blo 11,000'

VORTAC unusable:

015°-034° byd 33 NM blo 10,000'

090°-100° byd 15 NM blo 8,000'

185°-190° byd 30 NM blo 8,000'

185°-190° byd 38 NM blo 9,000'

190°-230° byd 20 NM blo 10,000'

345°-034° byd 10 NM blo 6,000'

345°-034° byd 20 NM blo 8,000'

360°-015° byd 33 NM blo 11,000'

DME unusable:

215°-315°

RCO 122.2 (PRESCOTT RADIO)

PIMA

FLYING J RANCH (E37) 4 SW UTC-7 N32°50.87' W109°52.90'

PHOENIX

3114 NOTAM FILE PRC

RWY 18-36: 2950X45 (DIRT)

RWY 18: Brush.

RWY 36: Brush.

RWY 07-25: 1650X48 (DIRT)

RWY 07: Brush.

RWY 25: Brush.

AIRPORT REMARKS: Attended continuously. Rwy 18-36 28' power pole 67' west of rwy 700' north of Rwy 36 thld. Drop-offs on sides of both rwys and ends. Rwy 18-36 fuel tank 55' right of centerline 100' from Rwy 18 thld. Rwy 07-25 has 1-2 ft brush scattered on surface, 3-10 ft brush in primary surface, some as close as 20 ft fm cntrln. Rwy 18-36 4'-6' brush in primary surface, both sides. Rwy 18-36, south 540 ft of rwy is 45 ft wide, north 240 ft of rwy is 80 ft wide. Rwy 18-36 rough in places due to large rocks on surface, however no ruts.

AIRPORT MANAGER: 928-485-9201

COMMUNICATIONS: CTAF 122.9

CLEARANCE DELIVERY PHONE: For CD ctc Albuquerque ARTCC at 505-856-4861.

PINAL AIRPARK (See MARANA on page 55)

PLEASANT VALLEY (See PEORIA on page 61)