

CONTINUED FROM PRECEDING PAGE

COMMUNICATIONS: CTAF 125.2 ATIS 119.2 UNICOM 122.95

® BOSTON APP/DEP CON 124.4

TOWER 125.2 (1200-0200Z± 15 May-31 Oct; 1200-0100Z± 01 Nov-14 May) GND CON 121.6

AIRSPACE: CLASS D svc 1200-0200Z± 15 May- 31 Oct, 1200-0100Z± 01 Nov- 14 May; other times CLASS G.

RADIO AIDS TO NAVIGATION: NOTAM FILE LWM.

LAWRENCE (L) DME 112.5 LWM Chan 72 N42°44.43' W71°05.69' 140° 12.3 NM to fld. 306/0.W.
DME unusable:
160°-195° byd 23 NM blo 2,500'

LOC/DME 110.5 I-BVY Chan 42 Rwy 16. LOC unusable byd 15° left of course. DME unusable byd 15° left of course.

COMM/NAV/WEATHER REMARKS: Emerg frequency 121.5 not available at twr. When twr not open close fit plan with Boston apch—121.6.

BOMBE N41°43.93' W70°26.48' NOTAM FILE FMH.

NDB (LOM) 362 FM 235° 5.7 NM to Cape Cod Coast Guard Air Station.

BOSTON

GENERAL EDWARD LAWRENCE LOGAN INTL (BOS)(KBOS) 1 E UTC-5(-4DT)

N42°21.78' W71°00.38'

19 B LRA Class I, ARFF Index E NOTAM FILE BOS

RWY 15R-33L: H10083X150 (ASPH-GRVD) S-120, D-250, 2S-175,

2D-550 PCN 90 F/C/W/T HIRL CL

RWY 15R: MALS. TDZL. PAPI(P4L)—GA 3.0° TCH 71'. RVR-TMR Thld dspcd 882'. Trees.

RWY 33L: ALSF2. TDZL. PAPI(P4R)—GA 3.0° TCH 68'. RVR-TMR Boat.

RWY 04R-22L: H10006X150 (ASPH-GRVD) S-120, D-250, 2S-175,

2D-550 PCN 90 F/C/W/T HIRL CL

RWY 04R: ALSF2. TDZL. PAPI(P4L)—GA 3.0° TCH 67'. RVR-TMR Thld dspcd 1155'. Boat.

RWY 22L: MALS. PAPI(P4R)—GA 3.0° TCH 71'. RVR-TMR Thld dspcd 1199'. Boat.

RWY 04L-22R: H7864X150 (ASPH-GRVD) S-120, D-250, 2S-175,

2D-550 PCN 90 F/C/W/T HIRL CL

RWY 04L: REIL. PAPI(P4L)—GA 3.0° TCH 50'. RVR-TR Boat.

RWY 22R: PAPI(P4L)—GA 3.0° TCH 50'. RVR-TR Thld dspcd 819'. Boat.

RWY 09-27: H7001X150 (ASPH-GRVD) S-120, D-250, 2S-175,

2D-550 PCN 90 F/C/W/T HIRL CL

RWY 09: RVR-TR Boat.

RWY 27: REIL. PAPI(P4L)—GA 3.0° TCH 71'. RVR-TR Boat.

RWY 14-32: H5000X100 (ASPH-GRVD) S-120, D-250, 2S-175, 2D-490 PCN 85 F/C/W/T HIRL

RWY 14: Bldg.

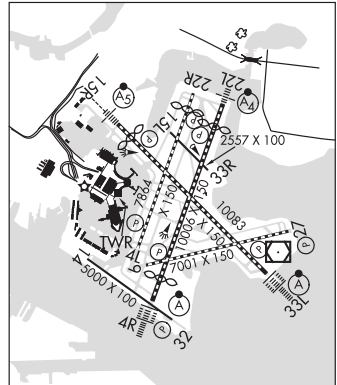
RWY 32: REIL. PAPI(P4L)—GA 3.0° TCH 45'.

RWY 15L-33R: H2557X100 (ASPH) S-120, D-250, 2S-175, 2D-550 PCN 90 F/C/W/T MIRL

LAND AND HOLD—SHORT OPERATIONS

LDG RWY	HOLD—SHORT POINT	AVBL LDG DIST
RWY 04L	15L-33R	5250
RWY 15R	09-27	6800
RWY 22L	09-27	6400
RWY 27	04R-22L	5650

NEW YORK
COPTER
H-10J, 11D, 12K, L-33D, 34J
IAP, AD



CONTINUED ON NEXT PAGE

MASSACHUSETTS
CONTINUED FROM PRECEDING PAGE

RUNWAY DECLARED DISTANCE INFORMATION

RWY 04L:TORA-7864 TODA-7864 ASDA-7864 LDA-7864
RWY 04R:TORA-10006 TODA-10006 ASDA-10006 LDA-8851
RWY 09: TORA-7001 TODA-7001 ASDA-7001 LDA-7001
RWY 14: TORA-5000 TODA-5000 ASDA-5000 LDA-5000
RWY 15L:TORA-2557 TODA-2557 ASDA-2557 LDA-2557
RWY 15R:TORA-10083 TODA-10083 ASDA-10083 LDA-9202
RWY 22L:TORA-10006 TODA-10006 ASDA-10006 LDA-8806
RWY 22R:TORA-7864 TODA-7864 ASDA-7864 LDA-7046
RWY 27: TORA-7001 TODA-7001 ASDA-7001 LDA-7001
RWY 32: TORA-5000 TODA-5000 ASDA-5000 LDA-5000
RWY 33L:TORA-10083 TODA-10083 ASDA-10083 LDA-10083
RWY 33R:TORA-2557 TODA-2557 ASDA-2557 LDA-2557

ARRESTING GEAR/SYSTEM**RWY 04L:** EMAS**RWY 15R:** EMAS

SERVICE: S4 **FUEL** 100LL, JET A **OX** 1, 2, 3, 4 **LGT** Rwy status lights in operation. Rwy 22L VGSI unusable by 7 degs left of centerline.

NOISE: Between 0500-1100Z‡ Rwy 15R is preferential night rwy for tkf and Rwy 33L is preferential ngt rwy for ldg. For noise abatement procedures call 617-561-1636 Mon-Fri 1400-2200Z‡.

AIRPORT REMARKS: Attended continuously. Birds on and invof arpt. Numerous cranes on and invof arpt. Rwy 14-32 unidirectional, no ldgs Rwy 14, no tkfs Rwy 32. International ramp arrivals must obtain a gate assignment from international ramp control before entering ramp area. No remaining overnight parking for non-tenant charter acft without prior Massport permission. ASDE-X in use. Operate transponders with altitude reporting mode and ADS-B (if equipped) enabled on all airport surfaces. Terminal E, North and South Cargo arrivals ctc Massport Gate Control on 131.1 before entering/departing ramp area. Pilots should complete all calculations prior to pushback from gate. Ldg fee. Flight Notification Service (ADCUS) available.

AIRPORT MANAGER: 617-567-5400**WEATHER DATA SOURCES:** ASOS 135.0 (617) 567-5762. TDWR.

CONTINUED ON NEXT PAGE

CONTINUED FROM PRECEDING PAGE

COMMUNICATIONS: D-ATIS APP 135.0 D-ATIS DEP 135.0 (617) 455-3003 UNICOM 122.95

BOSTON RCO 122.4 122.1R 112.7T (BRIDGEPORT RADIO)

Ⓡ BOSTON APP/DEP CON 127.2 (South) 120.6 (West) 118.25 (North)

Ⓡ BOSTON DEP CON 133.0

BOSTON TOWER 128.8 (West) 132.225 (East) 124.725 (Helicopters)

GND CON 121.9 121.75 CLNC DEL 121.65

PRE TAXI CLNC 121.65 RAMP CTL 134.05

CPDLC (LOGON KUSA)

PDC

AIRSPACE: CLASS B See VFR Terminal Area Chart.

VOR TEST FACILITY (VOT) 111.0

RADIO AIDS TO NAVIGATION: NOTAM FILE BOS.

BOSTON (H) VOR/DME 112.7 BOS Chan 74 N42°21.45' W70°59.37' at fld. 18/16W.

VOR unusable:

061°-104° byd 18 NM blo 2,000'

061°-104° byd 18 NM blo 2,000'

271°-060° byd 25 NM blo 2,000'

271°-060° byd 25 NM blo 3,500'

ILS/DME 110.3 I-BOS Chan 40 Rwy 04R. Class IIIE.

ILS/DME 110.7 I-MDC Chan 44 Rwy 15R. Class IC. Localizer offset angle 001° 35 min.

ILS/DME 110.3 I-LQN Chan 40 Rwy 22L. Class IT. Note *DME also serves Rwy 04R.

ILS/DME 111.3 I-DGU Chan 50 Rwy 27. Class IE.

ILS/DME 110.7 I-LIP Chan 44 Rwy 33L. Class IIIE. LOC unsl byd 33° left side of course.

COMM/NAV/WEATHER REMARKS: DME Channel 40 located 2171' from stop end Rwy 04R and 260' left of centerline is common to Rwy 22L.

CAPE COD (See MARSTON MILLS on page 127)