

**JOHN F KENNEDY INTL (JFK)(KJFK)** 13 SE UTC-5(-4DT) N40°38.40' W73°46.72'

**NEW YORK**

13 B LRA Class I, ARFF Index E NOTAM FILE JFK

**COPTER**

**RWY 13R-31L:** H14511X200 (CONC-GRVD) D-210, 2S-175, 2D-550, 2D/2D2-1100 PCN 98 R/B/W/T HIRL CL

**H-101, 121, L-338, 34H**

**RWY 13R:** RLLS. PAPI(P4L)—GA 3.0° TCH 79'. RVR-TMR Thld dspcd 2043'. Rgt tfc.

**IAP, AD**

**RWY 31L:** PAPI(P4L)—GA 3.0° TCH 67'. RVR-TMR Thld dspcd 3263'.

**RWY 04L-22R:** H12079X200 (CONC-GRVD) D-210, 2S-175, 2D-550, 2D/2D2-1100 PCN 90 R/B/W/T HIRL CL

**RWY 04L:** TDZL. REIL. PAPI(P4L)—GA 3.0° TCH 75'. RVR-TR Thld dspcd 460'.

**RWY 22R:** PAPI(P4L)—GA 3.0° TCH 77'. RVR-TR Thld dspcd 3425'. Tree.

**RWY 13L-31R:** H10000X200 (CONC-GRVD) D-210, 2S-175, 2D-550, 2D/2D2-1100 PCN 148R/A/W/T HIRL CL

**RWY 13L:** ALSF2. TDZL. PAPI(P4L)—GA 3.0° TCH 74'. RVR-TR Thld dspcd 907'. Pole. Rgt tfc.

**RWY 31R:** MALSR. TDZL. PAPI(P4R)—GA 3.0° TCH 54'. RVR-TR Thld dspcd 1027'. Tree.

**RWY 04R-22L:** H8400X200 (ASPH-GRVD) D-210, 2S-175, 2D-550, 2D/2D2-1100 PCN 90 F/B/W/T HIRL CL

**RWY 04R:** ALSF2. TDZL. PAPI(P4L)—GA 3.0° TCH 69'. RVR-TMR Thld dspcd 1027'. Tree.

**RUNWAY DECLARED DISTANCE INFORMATION**

**RWY 04L:**TORA-11351 TODA-11351 ASDA-11470 LDA-11010

**RWY 04R:**TORA-8400 TODA-8400 ASDA-8400 LDA-8400

**RWY 13L:**TORA-10000 TODA-10000 ASDA-10000 LDA-9093

**RWY 13R:**TORA-14511 TODA-14511 ASDA-14511 LDA-12468

**RWY 22L:**TORA-8400 TODA-8400 ASDA-8400 LDA-8400

**RWY 22R:**TORA-12079 TODA-12079 ASDA-11219 LDA-7794

**RWY 31L:**TORA-14511 TODA-14511 ASDA-14511 LDA-11248

**RWY 31R:**TORA-10000 TODA-10000 ASDA-9513 LDA-8486

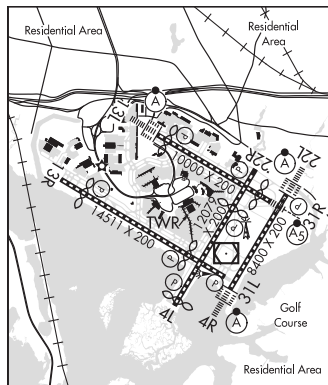
**ARRESTING GEAR/SYSTEM**

**RWY 04R:** EMAS

**RWY 22L:** EMAS

**SERVICE:** S4 FUEL 100LL, JET A OX 1, 3

**NOISE:** For noise abatement restrictions call 212-435-3747 during normal business hours.



**CONTINUED ON NEXT PAGE**

## CONTINUED FROM PRECEDING PAGE

**AIRPORT REMARKS:** Special Air Traffic Rules—Part 93 High Density Arpt. Prior reservation rqr. See Aeronautical Information Manual. Attended continuously. Flocks of birds on and in/ov arpt. General Aviation, non based coml acft oprs must make arrangements for fuel prior to arr call 347-566-6620 or UNICOM 122.95. Acft opr and twy restrictions exist for A380, B747-800, B777-300ER and A340-600, and A350-1000. Please ctc JFK arpt ops for more info. High volume of low level VFR traffic, 500' and blo, along shoreline south of JFK. Para-sail and banner towing ops 1000' and blo in upper and lower New York bays incl Rockaway Inlet indef. Caution Rwy 13R can be confused with Rwy 13L. Converging ops on Rwy 13R and Rwy 22L conducted via arr distance window. Coded transponder rqr. Exp to leave and re-enter the Class B Airspace dur moderate to heavy arr periods. ASDE-X in use. Operate transponders with altitude reporting mode and ADS-B (if equipped) enabled on all airport surfaces. Metering procedures in effect—ctc ramp ctl prior to pushback 1200-1500Z‡ daily, 1900-0300Z‡ daily. RLLS Rwy 13L uses 1000' lgt station of the ALS only with CRI VOR apchs and is angled toward AQUEDUCT, also 5 SFL from 1200'-2000' and a 5 SFL grouping aprx 1 mile from rwy +1 adjacent forming apch. Apch gate angled 35° south of Rwy 13L cntrln designed to provide earlier ident of rwy environment. Rwy 22L ALSF2 NSTD lgt spacing. Rwy 13R first P4L horizontal offset 22° left. Rwy 13R has two (2) PAPI-P4L systems. (Rwy 13R) offset PAPI supports VOR or GPS Rwy 13R and parkway visual Rwy 13R. Rwy 22L PAPI horizontal offset 4° to left. Rwy 22R PAPI unusable beyond 8° rgt of centerline. Rwy 13L PAPI rotated 10 deg right of rwy centerline. Rwy 13L PAPI unusable left of rwy centerline. Continuous taxiway maintenance activities at numerous locations. A380 and B747-800 acft tax speed restricted to max 17 kts/20 mph on all twys. Twy A between Twy NA and Twy NB acft speed restriction of 17 kts/20 mph maximum for A380, B747-800, B747-400, B777-300ER, B777-200, A340, A330, B787 and A350. UFN Twy D between Twy C and hangar 7 clsd. Twy H CL lghts between Twy A and Rwy 04L-22R OTS. Twy H CL lghts between terminal 4 ramp and Twy A OTS. Twy NB clsd to Southbound turns at Twy A. Acft are not permitted to stop on either Twy A or B bridges. Periodic fire department training adjacent apch end of Rws 22L and 22R. Twy Q3 cntrln lghts OTS. Rwy 31R holding position markings at Rwy 04L-22R southeast side obsc. Rwy 13L holding position markings at Rwy 04L-22R northwest side obsc. Obstruction bldg lgt OTS 6.3 NM ESE JFK 222' MSL (220' AGL). NSTD engineered materials Arresting System (EMAS) 393' in length by 226' in width lctd at ther DER 04R. NSTD engineered materials Arresting System (EMAS) 405' in length by 226' in width lctd at ther DER 22L. Rwy status lghts in ops. Rwy 31R 1000 ft dist remaining sign misg. Non-std markings in GA apr, ctc FBO on UNICOM or 347-566-6620 for wing walkers. Obst parked acft (ASN 2020-AEA-1302-NRA) 403933N 0734749W (1.4NM NW JFK) 74 (64 ft AGL) U/S 1200-0100 dly. Ldg fee. Flight Notification Service (ADCUS) avbl.

**AIRPORT MANAGER:** (718) 244-3501

**WEATHER DATA SOURCES:** ASOS 128.725 (718) 656-0956. LLWAS. TDWR.

**COMMUNICATIONS:** D-ATIS ARR/DEP 128.725 D-ATIS ARR-SW 115.4 D-ATIS ARR-NE 117.7 UNICOM 122.95

KENNEDY RCO 122.1R 115.9T (NEW YORK RADIO)

Ⓡ NEW YORK APP CON 125.7 128.125

Ⓡ NEW YORK DEP CON 135.9

TOWER 119.1 (Rwys 04R-22L and 13L-31R) 123.9 (Rwy 04L-22R and 13R-31L)

GND CON 121.9 CLNC DEL/PRE TAXI CLNC 135.05 RAMP CTL 125.05

CPDLC (LOGON KUSA)

PDC

**AIRSPACE:** CLASS B See VFR Terminal Area Chart.

CONTINUED ON NEXT PAGE

**NEW YORK**  
**CONTINUED FROM PRECEDING PAGE**

**RADIO AIDS TO NAVIGATION:** NOTAM FILE JFK.

**KENNEDY (H) VOR/DME** 115.9 JFK Chan 106 N40°37.97' W73°46.28' at fld. 11/12W.

VOR unusable:

025°-055° byd 35 NM blo 3,000'

155°-210° byd 30 blo 2,000'

340°-345° byd 20 NM blo 4,000'

340°-345° byd 30 NM

DME unusable:

090°-225° byd 30 NM blo 2,000'

**CANARSIE (T) VOR/DME** 112.3 CRI Chan 70 N40°36.75' W73°53.67' 084° 5.5 NM to fld. 10/11W.

VOR unusable:

047°-175°

224°-035°

**ILS/DME** 110.9 I-HIQ Chan 46 Rwy 04L. Class IE. Glideslope unusable byd 5° right of course. Auto cpd apchs na blw 500ft MSL.

**ILS/DME** 109.5 I-JFK Chan 32 Rwy 04R. Class IIIE. DME also serves Rwy 22R.

**ILS/DME** 111.5 I-TLK Chan 52 Rwy 13L. Class IIE. LOC unusable byd 11 DME. DME unusable byd 30° right of centerline. Glideslope unusable byd 8 NM.

**ILS/DME** 110.9 I-IWY Chan 46 Rwy 22L.

**ILS/DME** 109.5 I-JOC Chan 32 Rwy 22R. Localizer offset angle 2.5 deg. DME also serves Rwy 04R.

**ILS** 111.35 I-MOH Rwy 31L. Class IE.

**ILS/DME** 111.5 I-RTH Chan 52 Rwy 31R. Class ID. LOC unusable byd 15° left side of course. ILS rth markings obsc at twy k indef.

**COMM/NAV/WEATHER REMARKS:** Use caution for possible radio interference or false instructions on twr frequencies.

-----