

WINDSOR LOCKS

BRADLEY INTL (BDL)(KBDL) P (ANG ARNG) 3 W UTC-5(-4DT) N41°56.34'

NEW YORK

W72°41.06'

H-101, 11D, 12K, L-33C, 34I

173 B TPA—See Remarks LRA Class I, ARFF Index C NOTAM FILE BDL MON Airport

IAP, AD

RWY 06-24: H9510X200 (ASPH-GRVD) S-200, D-200, 2S-175,

2D-350, 2D/2D2-710 PCN 71 F/B/X/T HIRL CL

RWY 06: ALSF2. TDZL. REIL. PAPI(P4L)—GA 3.0° TCH 71'. RVR-TMR Trees.

RWY 24: MALS. TDZL. PAPI(P4L)—GA 3.0° TCH 71'. RVR-TMR Trees.

RWY 15-33: H6847X150 (ASPH-GRVD) S-200, D-200, 2S-175,

2D-350 PCN 64 F/A/X/T HIRL

RWY 15: REIL. PAPI(P4L)—GA 3.5° TCH 61'. RVR-R Trees.

RWY 33: MALS. PAPI(P4R)—GA 3.0° TCH 72'. RVR-T Trees.

LAND AND HOLD—SHORT OPERATIONS

LDG RWY	HOLD—SHORT POINT	AVBL LDG DIST
RWY 24	15-33	5850
RWY 33	06-24	4550

RUNWAY DECLARED DISTANCE INFORMATION

RWY 06: TORA-9509 TODA-9509 ASDA-9509 LDA-9509

RWY 15: TORA-6847 TODA-6847 ASDA-6847 LDA-6847

RWY 24: TORA-9509 TODA-9509 ASDA-9509 LDA-9509

RWY 33: TORA-6847 TODA-6847 ASDA-6847 LDA-6847

SERVICE: S4 FUEL 100LL, JET A OX1, 2, 3, 4 LGT Unmonitored when

afld clsd. Afld ops ltd to tenant acct when afld clsd. **MILITARY—JASU (MD)-3 FUEL A++(Mil) A, A+ (C860-627-3300.)** (NC-100LL) FLUID SP LOX OIL O-128-133-148 (Mil) SOAP

AIRPORT REMARKS: Attended continuously. Numerous birds freq on or invof arpt. No trng flts, no practice apchs, no touch and go ldrs btn Mon-Sat 0400-1200Z and Sun 0400-1700Z. Twy J clsd btn S and R to acct with wing spans in excess of 170 ft. BASH Phase II increased bird activity Sep-Oct and Mar-Apr. Caution: ANG ramp mrk may not be appropriate for large acct; flw marshallers instr. ANG: When ckg ATIS, birds in vcy may inde heightened bird watch condition (BWC). USAF acct ctc ANG airfield ops on UHF for current BWC and any assoc rstrns. KC35 acct use caution, fire hydrants are 33" and are less than 84" from taxilane cntrln. Solar panel farm located 1.5 miles south of Rwy 33 thld. All acct overflight of solar farm will be at or above 500' AGL. Parl twy ops on Twy C and Twy B rstrd to acct with wingspans of 171 ft or less. Twy C btn Twy B and Twy H acct tax spd rstrn of 8 kts/10 mph max for acct with wingspan 214 ft or grt. ASDE-X in use. Operate transponders with altitude reporting mode and ADS-B (if equipped) enabled on all airport surfaces.

TPA—1873(1700) heavy acct. Afld mgr does not issue or store COMSEC for tran crews. Fixed wing acct use low idle for taxi, no engine checks or power runs allowed on the ARNG ramp due to possible FOD hazard. Rwy 06-24 245 ft by 200 ft blast pad SW end. Rwy 15-33 100 ft by 200 ft blast pad SE end. Lgtd obst ant 36 ft AGL/205 ft MSL (Rwy 24 ILS/GS ANT) 162 ft NW of Twy C cntrln marking btn Twy B and Twy H. Twy S hold pad at Rwy 33 clsd. Ldg fee for business, corporate and revenue producing acct. Flight Notification Service (ADCUS) avbl. LRA: CSTMS by prior arrangement. Acct req U.S. CSTMS svc must park on the CSTMS spot with the nose of the acct facing SW. Ctc CSTMS at 860-292-1314 when parked. Ops ctc autovon 636-8385, coml 860-627-3001.

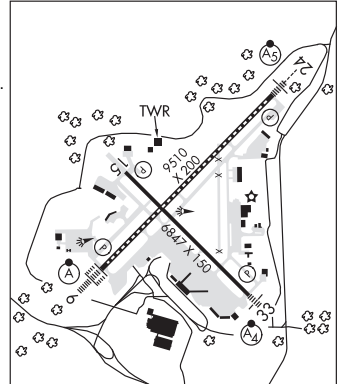
AIRPORT MANAGER: 860-292-2003**WEATHER DATA SOURCES:** ASOS 118.15 (860) 386-3480. WSP.**COMMUNICATIONS:** D-ATIS 118.15 (860-386-3570) UNICOM 122.95Ⓡ **YANKEE APP/DEP CON** 123.95 (061°-240°) 125.35 (241°-060°) 127.225**TOWER** 120.3 **GND CON** 121.9 **CLNC DEL** 121.75

CPDLC (LOGON KUSA)

PDC

AIRSPACE: CLASS C svc ctc **APP CON.****VOR TEST FACILITY (VOT)** 111.4**RADIO AIDS TO NAVIGATION:** NOTAM FILE HFD.**HARTFORD (L) VOR/DME** 114.9 HFD Chan 96 N41°38.47' W72°32.85' 354° 18.9 NM to fld. 849/13W.**ILS/DME** 111.1 I-BDL Chan 48 Rwy 06. Class IIIE.**ILS/DME** 111.1 I-MYQ Chan 48 Rwy 24. Class IIIE. DME unusable fm .4 NM inbd to Rwy 24.**ILS/DME** 108.55 I-IXX Chan 22(Y) Rwy 33. Class IE.

ASR



WINDSOR LOCKS N41°56.37' W72°40.49'

NEW YORK

RCO (BRIDGEPORT RADIO)

L-33C, 34I