

LANDMARK USFS (UØØ) 1 SE UTC-7(-6DT) N44°38.53' W115°32.00'

GREAT FALLS

6662 NOTAM FILE BOI

RWY 16-34: 4000X100 (TURF-DIRT) 0.3% up S**RWY 16:** Trees.**RWY 34:** Tree.**AIRPORT REMARKS:** Unattended. No telephone avbl at arpt. Wildlife on and invof arpt. No winter maintenance. No line of sight between rwy ends. Arpt located in high mountain valley surrounded by high terrain. Rwy 16-34 edges marked with white rock markers.**AIRPORT MANAGER:** (208) 382-7400**COMMUNICATIONS:** CTAF 122.9**CLEARANCE DELIVERY PHONE:** For CD ctc Salt Lake ARTCC at 801-320-2568.**LEADORE** (UØØ) 0 S UTC-7(-6DT) N44°40.39' W113°21.15'

GREAT FALLS

6029 NOTAM FILE BOI

RWY 11-29: H3500X140 (ASPH-TURF) RWY LGTS(NSTD) 0.5% up E**RWY 11:** Pole.**RWY 29:** Fence.**RWY 16-34:** 2903X90 (TURF) 1.4% up S**RWY 16:** Pole.**RWY 34:** Fence.**AIRPORT REMARKS:** Unattended. Numerous buildings in apch to Rwy 11. Rwy 11-29 2300 ft by 50 ft asph beginning at Rwy 11 end. Rwy 16-34 road at 200' on centerline, +30' pole 250' 60' left, numerous other obstruction to +10' at 100' to 400' in the apch zone. Agricultural irrigation equipment +15' may be located within 50' of rwy end 34. Rwy 11-29 surface very rough. Rwy 16-34 surface extremely rough. Rwy 11-29 NSTD rwy lgts. Rwy 11 last 1200' not lgtd.**AIRPORT MANAGER:** (208) 316-4521**COMMUNICATIONS:** CTAF 122.9**CLEARANCE DELIVERY PHONE:** For CD ctc Salt Lake ARTCC at 801-320-2568.**LEE WILLIAMS MEML** (See MIDVALE on page 57)**LEMHI CO** (See SALMON on page 68)**LEWISTON****LEWISTON-NEZ PERCE CO** (LWS)(KLWS) 2 S UTC-8(-7DT) N46°22.47' W117°00.92'

SEATTLE

1442 B TPA—See Remarks Class I, ARFF Index A NOTAM FILE LWS MON Airport

H-1C, L-13B

RWY 08-26: H6511X150 (ASPH-GRVD) S-150, D-180, 2S-175,

2D-400 PCN 56 F/A/X/T HIRL

RWY 08: REIL. VASI(V4L)—GA 3.0° TCH 45'. Rgt tfc.**RWY 26:** MALSR. PAPI(P4L)—GA 3.0° TCH 51'. Tree.**RWY 12-30:** H5003X75 (ASPH-GRVD) S-118, D-196, 2S-119

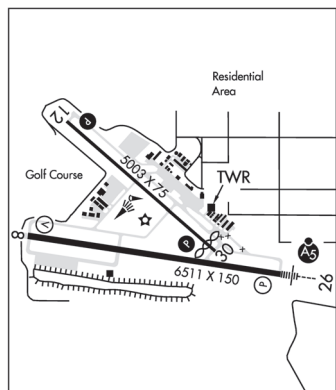
PCN 47 F/A/X/T MIRL 1.4% up SE

RWY 12: REIL. PAPI(P2L)—GA 3.0° TCH 40'. Rgt tfc.**RWY 30:** PAPI(P2L)—GA 3.0° TCH 45'. Thld displcd 253'. Antenna.**RUNWAY DECLARED DISTANCE INFORMATION****RWY 08:** TORA-6511 TODA-6511 ASDA-6511 LDA-6511**RWY 12:** TORA-5003 TODA-5003 ASDA-4750 LDA-4750**RWY 26:** TORA-6511 TODA-6511 ASDA-6511 LDA-6511**RWY 30:** TORA-5003 TODA-5003 ASDA-5003 LDA-4750**SERVICE:** S4 FUEL 100, 100LL, JET A LGT When ATCT clsd ACTVT
MALSR Rwy 26; REIL Rwy 08; PAPI Rwy 12 and Rwy 30—CTAF. Rwy 12 PAPI unusbl byd 3.5 NM.**AIRPORT REMARKS:** Attended 1330-0500Z. CLOSED to unscheduled air carrier ops with more than 30 pax seats 1500-0100Z. exc PPR call arpt mgr 208-746-4471 other times call station number 4, 208-743-0172. Frequent no radio AG acft activity invof arpt. LWS apn E hngr ramp clsd to acrs exc GA and acft wingspan less than 58 ft. Twy A btn Twy A1 and Twy D clsd to air carriers and acft wingspan more than 78 ft. TPA—Heavy and turbine powered acft 3002(1560) all others 2502(1060).**AIRPORT MANAGER:** 208-748-9132**WEATHER DATA SOURCES:** ASOS 135,575 (208) 746-4185. LAWR5.**COMMUNICATIONS:** CTAF 119.4 UNICOM 122.95

RCO 122.35 (BOISE RADIO)

Ⓡ SEATTLE CENTER APP/DEP CON 123.95

TOWER 119.4 (1400-0600Z) GND CON 121.9

CLEARANCE DELIVERY PHONE: For CD if una to ctc on FSS freq, ctc Seattle ARTCC at 253-351-3694.

CONTINUED ON NEXT PAGE

NW, 12 AUG 2021 to 7 OCT 2021

CONTINUED FROM PRECEDING PAGE

AIRSPACE: CLASS D svc 1400-0600Z±; other times CLASS E.

RADIO AIDS TO NAVIGATION: NOTAM FILE LWS.

NEZ PERCE (L) VORW/DME 108.2 MQG Chan 19 N46°22.89' W116°52.17' 246° 6.1 NM to fld. 1734/20E.

DME unmonitored.

VOR portion unusable:

075°-115° byd 20 NM blo 12,000'

115°-155° byd 25 NM blo 6,900'

280°-290° byd 20 NM blo 4,200'

290°-335° byd 25 NM blo 4,000'

ILS 109.7 I-LWS Rwy 26. Class IE. Unmonitored when ATCT clsd. Autopilot coupled approaches not authorized blo 2,500'.

SNAKE RIVER SPB (78U) 3 SW UTC-8(-7DT) N46°21.88' W117°03.72'

SEATTLE

735 NOTAM FILE BOI

WATERWAY N-S: 3000X150 (WATER)

WATERWAY S: P-line.

SEAPLANE REMARKS: Attended Apr-Oct 1500Z±-dusk and Nov-Mar irregularly. P-lines cross Snake River north, south above and below Idg area. Bridge across Snake River N of Idg area. Ldg area within Lewiston-Nez Perce County arpt tfc area, ctc Lewiston twr. Waterway N-S waterlane length and width varies. Heavy boat tfc in vicinity of spb. No beaching gear or mooring buoys avbl. Acft may dock at marina if space is aval.

AIRPORT MANAGER: 208-799-5015

COMMUNICATIONS: CTAF 122.9

CLEARANCE DELIVERY PHONE: For CD ctc Seattle ARTCC at 253-351-3694.

LIBERATOR N42°58.96' W115°46.46' NOTAM FILE BOI.

SALT LAKE CITY

(L) VORW 114.9 LIA 354° 9.1 NM to Mountain Home Muni. 2990/18E.

L-11B

LOWER LOON CREEK (See CHALLIS on page 39)

LOWMAN

WARM SPRINGS CREEK (ØU1) 13 NE UTC-7(-6DT) N44°08.53' W115°18.84'

SALT LAKE CITY

4831 NOTAM FILE BOI

RWY 02-20: 2850X135 (TURF)

RWY 02: Tree.

RWY 20: Trees.

AIRPORT REMARKS: Unattended. No telephone avbl at arpt. Recommend land Rwy 02, tkf Rwy 20, when wind conditions allow. No line of sight between rwy ends. No winter maintenance. Rwy 02-20 edges and thlds marked with white rocks.

AIRPORT MANAGER: 208-334-8775

COMMUNICATIONS: CTAF 122.9

CLEARANCE DELIVERY PHONE: For CD ctc Salt Lake ARTCC at 801-320-2568.

LUCILE

BIG BAR USFS (1DA) 9 W UTC-8(-7DT) N45°32.07' W116°31.86'

SALT LAKE CITY

1236 NOTAM FILE BOI

RWY 17-35: 1203X30 (TURF-DIRT)

RWY 17: Trees.

RWY 35: Hill.

AIRPORT MANAGER: 541-975-5418

COMMUNICATIONS: CTAF 122.9

CLEARANCE DELIVERY PHONE: For CD ctc Seattle ARTCC at 253-351-3694.

MACKAY

COPPER BASIN (ØU2) 12 SW UTC-7(-6DT) N43°48.12' W113°49.89'

SALT LAKE CITY

7920 NOTAM FILE BOI

RWY 13-31: 4700X100 (TURF) 1.7% up SE

RWY 13: Road.

AIRPORT REMARKS: Unattended. No winter maintenance. Livestock and wildlife may be on and invof arpt. -1' ditch adjacent to edges of rwy. Rwy 13-31 edges and thresholds marked with white rocks. Arpt located in high mountain valley surrounded by high mountains. Note: Density alt may exceed 10000' during summer.

AIRPORT MANAGER: 208-334-8775

COMMUNICATIONS: CTAF 122.9

CLEARANCE DELIVERY PHONE: For CD ctc Salt Lake ARTCC at 801-320-2568.