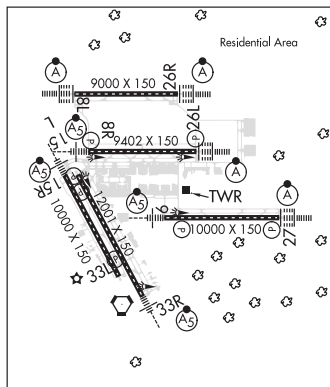


**GEORGE BUSH INTCNL/HOUSTON** (IAH)(KIAH) 15 N UTC-6(-5DT) N29°59.07' W95°20.49'

**HOUSTON COPTER IAP, AD**  
H-7C, L-19E, 21A, GOMW

- 96 B LRA Class I, ARFF Index E NOTAM FILE IAH
- RWY 15L-33R:** H12001X150 (CONC-GRVD) S-100, D-200, 2S-175, 2D-400, 2D/2D2-800 PCN 72 R/A/W/T HIRL CL
- RWY 15L:** PAPI(P4R)—GA 3.0° TCH 58'. RVR-TMR
- RWY 33R:** MALSR. RVR-TMR
- RWY 09-27:** H10000X150 (CONC-GRVD) D-210, 2S-175, 2D-560 PCN 67 R/A/W/T HIRL CL
- RWY 09:** MALSR. PAPI(P4R)—GA 3.0° TCH 71'. RVR-TMR
- RWY 27:** ALSF2. TDZL. PAPI(P4L)—GA 3.0° TCH 70'. RVR-TMR
- RWY 15R-33L:** H10000X150 (CONC-GRVD) S-75, D-200, 2S-175, 2D-400, 2D/2D2-873 PCN 94 R/B/W/T HIRL CL
- RWY 15R:** MALSR. TDZL. PAPI(P4L)—GA 3.0° TCH 71'. RVR-TMR
- RWY 33L:** TDZL. PAPI(P4R)—GA 3.0° TCH 59'. RVR-TMR
- RWY 08R-26L:** H9402X150 (CONC-GRVD) S-75, D-210, 2S-175, 2D-498, 2D/2D2-873 PCN 72 R/A/W/T HIRL CL
- RWY 08R:** MALSR. TDZL. PAPI(P4L)—GA 3.0° TCH 72'. RVR-TMR
- RWY 26L:** ALSF2. TDZL. PAPI(P4R)—GA 3.0° TCH 71'. RVR-TMR
- RWY 08L-26R:** H9000X150 (CONC-GRVD) S-75, D-210, 2S-175, 2D-409, 2D/2D2-873 PCN 72 R/A/W/T HIRL CL
- RWY 08L:** ALSF2. TDZL. RVR-TMR
- RWY 26R:** ALSF2. TDZL. RVR-TMR



**LAND AND HOLD—SHORT OPERATIONS**

LDG RWY	HOLD—SHORT POINT	AVBL LDG DIST
RWY 08R	TWY NP	9019
RWY 26L	TWY NE	9010

**RUNWAY DECLARED DISTANCE INFORMATION**

<b>RWY 08L:</b> TORA-9000 TODA-9000 ASDA-9000 LDA-9000
<b>RWY 08R:</b> TORA-9402 TODA-9402 ASDA-9402 LDA-9402
<b>RWY 09:</b> TORA-10000 TODA-10000 ASDA-10000 LDA-10000
<b>RWY 15L:</b> TORA-12001 TODA-12001 ASDA-12001 LDA-12001
<b>RWY 15R:</b> TORA-9999 TODA-9999 ASDA-9999 LDA-9999
<b>RWY 26L:</b> TORA-9402 TODA-9402 ASDA-9402 LDA-9402
<b>RWY 26R:</b> TORA-9000 TODA-9000 ASDA-9000 LDA-9000
<b>RWY 27:</b> TORA-10000 TODA-10000 ASDA-10000 LDA-10000
<b>RWY 33L:</b> TORA-9999 TODA-9999 ASDA-9999 LDA-9999
<b>RWY 33R:</b> TORA-12001 TODA-12001 ASDA-12001 LDA-12001

**SERVICE:** S4 FUEL 100LL, JET A OX 2

**NOISE:** Noise sensitive area north, east and west of arpt.

**AIRPORT REMARKS:** Attended continuously. Birds on and in/ov arpt. Rwy 09-27 CLOSED to acft with wingspan 215' and abv. ASDE-X in use. Opr transponders with altitude reporting mode and ADS-B (if equipped) enabled on all airport surfaces. Acft equipped with dual antennas should use top antenna. Rwy status lghts are in opr. Rwy 15L-33R magnetic anomalies may affect compass hdg for tkf. North ramp north and south taxilanes clsd to acft with wing spans greater than 125'. Taxilane RC clsd to acft with wingspan greater than 135'. Twy NR clsd to acft with wing spans greater than 125' between Twy WD and Twy WB. Twy NR btn Twy NC and Twy WW clsd to acft wingspan more than 214. Twy SF between Rwy 09-27 up to and including the east bridge clsd to acft with wingspan 215' and over. Twy WW run-up pad for Rwy 15L clsd acft with wingspan 135' and over. Twy WW btn Twy NR and Twy WB clsd to acft wingspan more than 214'. Pilots and crews should be aware of dep turns on crs in excess of 180°. Pilot readback of direction of turns is highly encouraged. The following movement areas are not visible from the twr: portions of Twys WA and WB from Twy WH to the AER 33R, Twys WA and WB from Twy WD north for 400', Twy WD from Twy WA to Twy NR, Twy NR, Twy WL from Rwy 15L to Twy WB and Twy WM. Taxilane RA, RB, RC, R2, and Twy SC north of Twy SB are designated non-movement areas operated by UAL ramp ctl. Twy SF btn Twy NB and Taxilane RA is designated non-movement area. Dual twy ops Twy NK btn Twy NB and North Ramp, west cntrln rstd to acft max wing spans 125' and east cntrln max wing spans 214'. Twy NR btn Twy WW and WB is designated non-movement area. Twy NK btn Twy NB and terminal D ramp simultaneous acft ops prohibited when middle taxilane in use. Twy WC west of Rwy 15R-33L rstd to acft with 118' wingspan and blo. Twy WA and Twy WB magnetic anomalies may affect compass hdg. North Ramp taxilane btn Twys NF and NR rstd to acft with wing span 125' and blo. Twy NA lgt all between Twy WP and Twy NP not standard. 9' AGL unmarked security fence adjacent to FBO and corporate base operator ramps and non-movement area taxilanes. Helicopter hover/taxi rstd to hard sfc movement areas only. Ldg fee. Flight Notification Service (ADCUS) available.

**CONTINUED ON NEXT PAGE**

## CONTINUED FROM PRECEDING PAGE

**AIRPORT MANAGER:** 281-230-3100

**WEATHER DATA SOURCES:** ASOS (281) 443-6397 TDWR.

**COMMUNICATIONS:** D-ATIS 124.05 (281-209-8665) UNICOM 122.95

HOUSTON RCO 122.4 (MONTGOMERY COUNTY RADIO)

Ⓡ HOUSTON APP CON 124.35 (West) 120.05 (East)

Ⓡ HOUSTON DEP CON 123.8 (West) 119.7 (North) 127.125

**TOWER** 135.15 (Rwy 09 and Rwy 27) 127.3 (Rwy 15R-33L and Rwy 15L-33R) 125.35 (Rwy 08R and Rwy 26L) 120.725 (Rwy 08L and Rwy 26R) **GND CON** 121.7 (Rwy 15L-33R, and Rwy 15R-33L) 118.575 (Rwy 08L-26R, Rwy 08R-26L and Rwy 09-27)

**GND METERING** 119.95 **CLNC DEL** 128.1

**CPDLC** (LOGON KUSA)

**PDC**

**AIRSPACE:** CLASS B See VFR Terminal Area Chart.

**RADIO AIDS TO NAVIGATION:** NOTAM FILE IAH.

**HUMBLE (H) VORTAC** 116.6 IAH Chan 113 N29°57.42' W95°20.74' 003° 1.7 NM to fld. 81/5E.

VORTAC monitored by ATCT

VOR portion unusable:

060°-070° byd 35 NM

175°-185° byd 20 NM blo 3,000'

Byd 30 NM blo 2,000'

DME unusable:

015°-090° byd 30 NM blo 2,000'

130°-320° byd 30 NM blo 2,000'

175°-185° byd 20 NM blo 3,000'

230°-250°

Byd 25° left of course

TACAN AZIMUTH unusable:

040°-055° blo 5,000'

150°-320° blo 4,500'

150°-320° byd 10 NM

**ILS/DME** 111.55 I-BZU Chan 52(Y) Rwy 08L. Class IIIE.

**ILS/DME** 109.7 I-IAH Chan 34 Rwy 08R. Class IE. DME also serves Rwy 26.

**ILS/DME** 110.9 I-UYO Chan 46 Rwy 09. DME also serves Rwy 27.

**ILS** 111.15 I-LKM Rwy 15R. Class IE. LOC unusable byd 30° right of course. DME unusable byd 25° left of course.

**ILS/DME** 109.7 I-JYV Chan 34 Rwy 26L. Class IIIE. DME also serves Rwy 08.

**ILS/DME** 111.55 I-OND Chan 52(Y) Rwy 26R. Class IIIE.

**ILS/DME** 110.9 I-GHI Chan 46 Rwy 27. Class IIIE. DME also serves Rwy 09.

**ILS** 111.9 I-CDG Rwy 33R. Class IE.

**COMM/NAV/WEATHER REMARKS:** Ground Based Augmentation System (GBAS) approach service volume 20 NM from threshold, all GLS approaches.

**HOUSTON EXEC** (TME)(KTME) 28 W UTC-6(-5DT) N29°48.30' W95°53.87'

166 B NOTAM FILE CXO

**RWY 18-36:** H6610X100 (ASPH) D-101 MIRL

**RWY 18:** REIL. PAPI(P4L)—GA 3.0° TCH 40'. P-line.

**RWY 36:** REIL. PAPI(P4L)—GA 3.0° TCH 40'. Rgt t/c.

**SERVICE:** S4 FUEL 100LL, JET A OX 3, 4 LGT Actvt MIRL Rwy

18-36, REIL Rwy 18 and 36—CTAF.

**NOISE:** Noise sensitive area east of arpt in effect, avoid housing area.

**AIRPORT REMARKS:** Attended continuously. Birds on and invof arpt. Touch and go lds prohibited.

**AIRPORT MANAGER:** 281-945-5000

**WEATHER DATA SOURCES:** AWOS-3 119.525 (281) 945-5451. or 713-932-8437.

**COMMUNICATIONS:** CTAF 126.975 UNICOM 122.975 ATIS 119.525 (24 hr 281-945-5451)

Ⓡ HOUSTON APP/DEP CON 123.8

**TOWER** 126.975 (1200-0400Z‡)

**GND CON** 132.075 **CLNC DEL** 132.075

**CLEARANCE DELIVERY PHONE:** For CD when ATCT is clsd ctc Houston Apch at 281-443-5844 to cnl IFR at 281-443-5888.

**AIRSPACE:** CLASS D svc 1200-0400Z‡; other times CLASS E.

**RADIO AIDS TO NAVIGATION:** NOTAM FILE ELA.

**EAGLE LAKE (H) VORV/DME** 116.4 ELA Chan 111 N29°39.75' W96°19.03' 061° 23.5 NM to fld. 192/8E.

**HOUSTON**

**H-7C, L-19D, 21A, GOMW**

**IAP, AD**

