

BATON ROUGE METRO, RYAN FLD (BTR)(KBTR) 4 N UTC-6(-5DT) N30°31.98' W91°08.99'

HOUSTON

70 B LRA ARFF Index—See Remarks NOTAM FILE BTR MON Airport

H-7D, L-21B, 22F

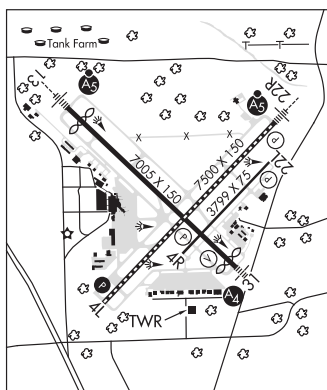
RWY 04L-22R: H7500X150 (CONC-GRVD) S-120, D-170, 2S-175,
2D-300 PCN 70 R/A/W/T HIRL CL**RWY 04L:** PAPI(P4L)—GA 3.0° TCH 55'. RVR-TR Pole.**RWY 22R:** MALSR. TDZL. PAPI(P4L)—GA 3.0° TCH 56'. RVR-TR Trees.
Rgt tfc.**RWY 13-31:** H7005X150 (ASPH-GRVD) S-120, D-170, 2S-175,
2D-300 PCN 95 F/C/X/T HIRL**RWY 13:** MALSR. RVR-TR Thld dsplcd 597'. Pole.**RWY 31:** MALSR. VASI(V4L)—GA 3.0° TCH 64'. RVR-R Thld dsplcd
314'. Road.**RWY 04R-22L:** H3799X75 (ASPH) S-30, D-45 PCN 26 F/C/X/T MIRL**RWY 04R:** PAPI(P2L)—GA 3.0°. Tree. Rgt tfc.**RWY 22L:** PAPI(P2L)—GA 3.0°. Tree.**RUNWAY DECLARED DISTANCE INFORMATION****RWY 04L:**TORA-7500 TODA-7500 ASDA-7500 LDA-7500**RWY 04R:**TORA-3799 TODA-3799 ASDA-3799 LDA-3799**RWY 13:**TORA-7004 TODA-7004 ASDA-7004 LDA-6407**RWY 22L:**TORA-3799 TODA-3799 ASDA-3799 LDA-3799**RWY 22R:**TORA-7500 TODA-7500 ASDA-7500 LDA-7500**RWY 31:**TORA-7004 TODA-7004 ASDA-6407 LDA-6094**ARRESTING GEAR/SYSTEM****RWY 13:** EMAS**SERVICE:** S4 FUEL 100LL, JET A OX 1, 3 LGT ACTIVATE MALSR Rwy 22R and Rwy 13, PAPI Rwy 04L, MALSR Rwy 31—CTAF. When twr clsd HIRL Rwy 13-31 and Rwy 04L-22R preset low intst, to increase intst ACTIVATE—CTAF. MRL Rwy 04R-22L not avbl.**AIRPORT REMARKS:** Attended 1100-0600Z†. Migratory birds on and in vicinity of arpt during months of Mar, Apr, Sep and Oct. Class I ARFF Index C, 24 hrs PPR for unscheduled air carrier ops with more than 30 passenger seats 0600-1100Z†, call arpt manager 225-355-2068/0333. When twr clsd use 121.9 to ctc ARFF for emergency request. Rwy 04R-22L not avbl for air carrier ops with more than 30 passenger seats. Rwy 04R-22L and Twy E are similar in appearance. Use caution when exiting Rwy 13-31. Ramp and twy lane adjacent to the commercial air carrier terminal building is limited to commercial air carrier and passenger airtaxi acft only. Twy E weight restrictions: single 44,000 lbs, dual tandem 93,000 lbs. Twy M clsd indefinitely. Twy E, Twy F btn Rwy 04R-22L and AER 31 not avbl for skedd acr ops. Twy F btn Rwy 04-22L and 31 RDSC to 40 ft wid.**AIRPORT MANAGER:** 225-355-0333**WEATHER DATA SOURCES:** ASOS (225) 354-2138 LLWAS.**COMMUNICATIONS:** CTAF 118.45 ATIS 125.2 225-354-2170 UNICOM 122.95

RCO 122.2 (DE RIDDER RADIO)

Ⓡ APP/DEP CON 120.3 WEST 126.5 EAST (1100-0600Z†)

Ⓡ HOUSTON CENTER APP/DEP CON 126.35 (0600-1100Z†)

TOWER 118.45 (1100-0600Z†) GND CON 121.9 CLNC DEL 119.4

CLEARANCE DELIVERY PHONE: For CD if una to ctc on FSS freq, ctc Houston ARTCC at 281-230-5622.**AIRSPACE:** CLASS C svc ctc APP CON svc (per TWRR/NOTAM 1100-0600Z†); other times CLASS E.**RADIO AIDS TO NAVIGATION:** NOTAM FILE BTR.**FIGHTING TIGER (L) VORTACW** 116.5 LSU Chan 112 N30°29.11' W91°17.64' 063° 8.0 NM to fld. 20/6E.**RUNDI NDB (LOMW)** 284 BT N30°34.98' W91°12.66' 133° 4.4 NM to fld. 69/0E.**ILS/DME** 110.3 I-BTR Chan 40 Rwy 13. Class ID. LOM RUNDI NDB. Unmonitored when ATCT closed.**ILS/DME** 108.7 I-CLZ Chan 24 Rwy 22R. Class IIE. Unmonitored when ATCT closed.**ASR** (1100-0600Z†)**BEAUREGARD RGNL** (See DE RIDDER on page 88)**BELCHER** N32°46.28' W93°48.60' NOTAM FILE SHV.

MEMPHIS

(H) VORTACW 117.4 EIC Chan 121 159° 14.2 NM to Shreveport Downtown. 190/7E.

H-6I, L-17E

BLOCK WR29 WBF N26°55.83' W90°30.42' /130

AWOS-3 118.525 (985) 773-5497 Winds unrel.

L-21B, GOMC

BLUEBIRD HILL (See KEITHVILLE on page 97)