

ASHEVILLE RGNL (AVL)(KAVL) 9 S UTC-5(-4DT) N35°26.17' W82°32.52'

2164 B Class I, ARFF Index B NOTAM FILE AVL

RWY 17-35: H8001X150 (ASPH-GRVD) S-120, D-219, 2D-404,

2D/2D2-837 PCN 54 F/B/X/U HIRL 0.7% up N

RWY 17: MALSR. REIL. PAPI(P4R)—GA 3.0° TCH 55'. RVR-R Stack.

RWY 35: MALSR. REIL. PAPI(P4L)—GA 3.0° TCH 53'. RVR-T Rgt tfc.

RUNWAY DECLARED DISTANCE INFORMATION

RWY 17: TORA-8001 TODA-8001 ASDA-8001 LDA-8001

RWY 35: TORA-8001 TODA-8001 ASDA-8001 LDA-8001

SERVICE: S2 FUEL 100LL, JET A OX3 LGT ACTVT MALSR Rwy 17 and 35; REIL Rwy 17 and 35; PAPI Rwy 17 and 35; HIRL off when twr clsd, ACTVT or incr intst—CTAF.

AIRPORT REMARKS: Attended continuously. Rwy 16-34 CLOSED, portions avbl for taxi to and from Rwy 17-35. Flocks of migratory birds on and invof arpt. PPR for unscheduled air carrier opr with more than 30 pax seats 0400-1200Z†, call arpt comm 828-684-4577. For the Asheville Rgnl arpt acft diversions emerg contingency plan and fac constraints ctc arpt admin at 828-684-2226.

AIRPORT MANAGER: 828-654-3243

WEATHER DATA SOURCES: ASOS (828) 681-0131 ASOS wind unreliable when atct clsd. LLWAS.

COMMUNICATIONS: CTAF 121.1 ATIS 120.2 UNICOM 122.95

Ⓡ **APP/DEP CON** 124.65 (160°-339°) 125.8 (340°-159°) (1130-0400Z†)

ATLANTA CENTER APP/DEP CON 132.625 (160°-339°) (0400-1130Z†)

TOWER 121.1 (1130-0400Z†) **GND CON** 121.9

CLEARANCE DELIVERY PHONE: When ATCT clsd, for CD ctc Atlanta ARTCC at 770-210-7692.

AIRSPACE: CLASS C svc ctc **APP CON** svc 1130-0400Z† other times CLASS G.

RADIO AIDS TO NAVIGATION: NOTAM FILE RDU.

SUGARLOAF MOUNTAIN (L) VORTACW 112.2 SUG Chan 59 N35°24.39' W82°16.12' 280° 13.5 NM to fld. 3970/2W.

BROAD RIVER NDB (HW) 379 BRA N35°16.37' W82°28.26' 347° 10.4 NM to fld. 2149/7W. NOTAM FILE AVL. NDB unmonitored when asheville ATCT closed.

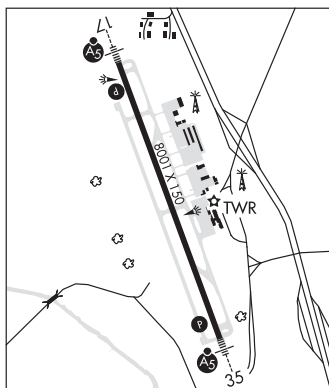
KEANS NDB (LOWW) 357 IM N35°31.97' W82°35.25' 166° 6.2 NM to fld. 2124/7W. NOTAM FILE AVL.

ILS/DME 110.9 I-IMO Chan 46 Rwy 17. Class IA. LOM KEANS NDB. LOC unmonitored when ATCT closed. LOC unusable byd 25° right and left of course, rapidly rising terrain. DME unusable byd 25° right and left of course, rapidly rising terrain.

ILS/DME 110.5 I-AVL Chan 42 Rwy 35. Class IB. Unmonitored when ATCT closed.

ASR (1130-0400Z†)

COMM/NAV/WEATHER REMARKS: Comm unavbl blo 6,000 ft excp by RDU Radio on 122.3 (SUGARLOAF MOUNTAIN RCO) when AVL Apch Ctl clsd. Right traffic when twr clsd.



ATLANTA

H-9B, 12G, L-25C

IAP, AD

AVERY CO(MORRISON FLD) (See SPRUCE PINE on page 339)

BARRETT'S MOUNTAIN N35°52.13' W81°14.43' NOTAM FILE RDU.

(H) **VOR/DME** 113.75 BZM Chan 84(Y) 230° 10.6 NM to Hickory Rgnl. 1880/6W.

VOR unusable:

030°-040° byd 15NM blo 8,500'

RCO 122.1R 113.8T (RALEIGH RADIO)

CHARLOTTE

L-25D