

OAKLAND

METRO OAKLAND INTL (OAK)(KOAK) 4 S UTC-8(-7DT) N37°43.28' W122°13.27'

SAN FRANCISCO

9 B TPA—See Remarks LRA Class I, ARFF Index D NOTAM FILE OAK

H-3B, L-2F, 3B, A
IAP AD

RWY 12-30: H10520X150 (ASPH-GRVD) S-75, D-210, 2D-500,

2D/2D2-900 PCN 71 F/A/W/T HIRL CL

RWY 12: MALSR. PAPI(P4R)—GA 2.75° TCH 70'. RVR-TMR Rgt tfc.

RWY 30: ALSF2. TDZL. PAPI(P4L)—GA 3.0° TCH 71'. RVR-TMR Thld dsplcd 114'.

RWY 10R-28L: H6213X150 (ASPH-GRVD) S-75, D-210, 2D-500, 2D/2D2-900 PCN 97 F/B/W/T HIRL

RWY 10R: REIL. PAPI(P4L)—GA 3.0° TCH 50'.

RWY 28L: PAPI(P4R)—GA 3.0° TCH 50'.

RWY 10L-28R: H5458X150 (ASPH-GRVD) S-75, D-210, 2D-500, 2D/2D2-900 PCN 69 F/C/W/T HIRL

RWY 10L: PAPI(P4R)—GA 3.0° TCH 50'.

RWY 28R: MALSR. PAPI(P4L)—GA 3.0° TCH 51'. Bldg. Rgt tfc.

RWY 15-33: H3376X75 (ASPH) S-12.5, D-65, 2D-100 MIRL
RWY 33: Rgt tfc.

RUNWAY DECLARED DISTANCE INFORMATION

RWY 10L:TORA-5458 TODA-5458 ASDA-5336 LDA-5336

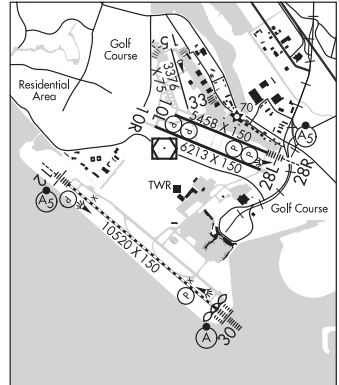
RWY 10R:TORA-6213 TODA-6213 ASDA-6213 LDA-6213

RWY 12: TORA-10000 TODA-10000 ASDA-10000 LDA-10000

RWY 28L:TORA-6213 TODA-6213 ASDA-6213 LDA-6213

RWY 28R:TORA-5458 TODA-5458 ASDA-5458 LDA-5458

RWY 30: TORA-10000 TODA-10000 ASDA-10000 LDA-10000



ARRESTING GEAR/SYSTEM

RWY 28L: EMAS

SERVICE: S4 FUEL 100LL, JET A OX 1, 2, 3, 4

NOISE: 24 hr Noise abatement procedure—turbojet and turboprop powered acft, turboprops over 17,000 lbs, four engine reciprocating powered acft, and surplus Military acft over 12,500 lbs should not depart Rwy 28L and Rwy 28R or land on Rwy 10R and Rwy 10L. For noise abatement info ctc noise abatement office at 510-563-6463. Noise abatement procedures not applicable in emerg or whenever Rwy 12-30 is closed due to maintenance, safety, winds or weather.

AIRPORT REMARKS: Attended continuously. Rwy 15-33 CLOSED to air carrier acft. Birds on and invof arpt. Ops superintendent 510-563-6432, cell 510-715-6286, 24 hour ops 510-563-3361. Acft with experimental or limited certification having over 1,000 horsepower or 4,000 pounds are restricted to Rwy 12-30. TPA—Rwy 28L 606(597), TPA—Rwy 28R 1006(997). Rwy 15-33 not avbl for sked acr opns with more than 9 psgr seats or unsked acr at least 31 psgr seats. Twy A, Twy E, Twy G, Twy H between Rwy 28R and Twy C max acft weight 150,000 lbs. Twy G and Twy H between Rwy 28L and Rwy 28R, max acft weight 12,500 lbs. Twy P max acft weight 161,000 lbs single; 190,000 lbs dual; 305,000 lbs dual tandem; 735,000 lbs double dual tandem. Twy C between Rwy 28R and Twy G and Twy B, Twy J, and Twy D max acft weight 861,000 lbs. Twy C between Twy G and Twy J max acft weight 90,000 lbs single; 144,000 lbs dual; 257,000 lbs tandem. Twy C between Twy J and Twy F max acft weight 76,000 lbs single, 115,000 lbs dual; 257,000 lbs tandem (dual tandem not authorized). Twy K btn Twy D and int Twys F, L, K max acft weight 56,000 lbs single; 70,000 lbs dual; 130,000 lbs tandem. Twy K btn Twy J and int Twys F, L, K max acft weight 33,000 lbs single; 45,000 lbs dual; tandem na. Preferential rwy use program in effect 0600-1400Z±. North fld preferred arrival Rwy 28L, north fld preferred departure Rwys 10R or 28R. If these Rwys unacceptable for safety or twr instruction then Rwy 12-30 must be used. 400' by 220' blast pad Rwy 12 and Rwy 30. Rwys 30, 28R and 28L distance remaining signs left side. 100' lgtd microwave antenna twr located 1320' wsw of OAK VORTAC, south of upwind end of Rwy 28L. 100' lgtd microwave antenna twr located west-southwest of OAK VORTAC, south of upwind end of Rwy 28L. Ldg fee in effect 24 hrs/day, ctc affd ops 510-563-3361. Flight Notification Service (ADCUS) avbl.

AIRPORT MANAGER: 510-563-6436

WEATHER DATA SOURCES: ASOS (510) 214-1776

COMMUNICATIONS: D-ATIS 133.775 (510) 635-5850 UNICOM 122.95

OAKLAND RCO 122.2 122.5 (OAKLAND RADIO)

Ⓡ **NORCAL APP CON** 124.8 124.525 125.35 128.325 (East) 135.65 (South) 135.1 (West) 134.5

Ⓡ **NORCAL DEP CON** 124.8 124.525 135.1 (West) 120.9 124.8 (Northwest)

OAKLAND TOWER 118.3 (Rwy 10L-28R, Rwy 10R-28L, Rwy 15-33) 127.2 (Rwy 12-30) 124.9

GND CON 121.75 (Rwy 12-30) 121.9 (Rwy 10L-28R, Rwy 10R-28L, Rwy 15-33) **CLNC DEL** 121.1

CPDLC (LOGON KUSA)

PDC

AIRSPACE: CLASS C svc ctc APP CON.

CONTINUED ON NEXT PAGE

CONTINUED FROM PRECEDING PAGE

RADIO AIDS TO NAVIGATION: NOTAM FILE OAK.

OAKLAND (H) VORV/DME 116.8 OAK Chan 115 N37°43.56' W122°13.42' at fld. 13/17E.

DME unusable:
340°-040° byd 30 NM blo 8,000'

ILS 111.9 I-AAZ Rwy 12. Class IE. Rwy 12 glideslope deviations are psbl when critical areas are not rqrtd to be protected. Acft operg in vcntry of glideslope trans.

ILS 109.9 I-OAK Rwy 28R. Class ID.

ILS/DME 108.7 I-INB Chan 24 Rwy 30. Class IIIE.

OAKLAND N37°43.56' W122°13.42' NOTAM FILE OAK.

SAN FRANCISCO
H-3A, L-2F, 3B, A

(H) VORV/DME 116.8 OAK Chan 115 at Metro Oakland Intl. 13/17E.

DME unusable:
340°-040° byd 30 NM blo 8,000'

RCO 122.5 (OAKLAND RADIO)

OCEAN RIDGE (See GUALALA on page 136)

OCEANO CO (L52) 1 W UTC-8(-7DT) N35°06.09' W120°37.34'

LOS ANGELES

14 B TPA—1000(986) NOTAM FILE HHR

RWY 11-29: H2325X50 (ASPH) S-12.5 MIRL

RWY 11: Brush. Rgt tfc.

RWY 29: Brush.

SERVICE: FUEL 100LL LGT ACTIVATE MIRL Rwy 11-29—CTAF.

NOISE: Extremely noise sensitive arpt and community, for tkf Rwy 29 pilots are requested to maintain rwy heading til crossing the shoreline.

AIRPORT REMARKS: Unattended. Arpt located 2 SM south of Pismo Beach. Self svc fuel avbl 24 hr. Ultralight activity on and invof arpt. Parachute Jumping. Recurring flocks of waterfowl on and invof arpt. Be alert for kites flown along beach 1/2 mile west of rwy. Unsurfaced areas soft and unusable. Taxilanes very narrow near buildings and parked acft. Twy lgts at exit only.

AIRPORT MANAGER: 805-781-5205

WEATHER DATA SOURCES: AWOS-3 118.375 (805) 489-1305.

COMMUNICATIONS: CTAF/UNICOM 122.7

CLEARANCE DELIVERY PHONE: For CD ctc Los Angeles ARTCC at 661-575-2079.

OCEANSIDE

BOB MAXWELL MEML AIRFIELD (OKB)(KOKB) 2 NE UTC-8(-7DT) N33°13.08' W117°21.09'

LOS ANGELES

28 B NOTAM FILE OKB

L-4H

RWY 06-24: H2712X75 (ASPH) S-12 MIRL

IAP

RWY 06: Road.

RWY 24: REIL. Hill. Rgt tfc.

SERVICE: S6 FUEL 100LL, JET A LGT Arpt bcn dusk-dawn. MIRL Rwy 06-24 preset low ints, to increase ints ACTIVATE—CTAF.

NOISE: Noise abatement in effect: follow riverbed all the way to coast prior to making any turns. Do not fly over any houses along river banks. No early turnouts prior to the ocean.

AIRPORT REMARKS: Attended 1700-0100Z‡. Fuel avbl 24 hrs 100LL self svc, full svc 1700-0030Z‡; Jet A 1700-0100Z‡. Parachute jumping. Birds on and invof arpt. Rwy has no pavement marking or edge lights byd dspcd thld. All tfc patterns to north. Mountains west, northwest, southwest Rwy 06 up to 280' MSL. Unlgt'd mountain 160' MSL in apch zone 3500' from west end of pavement Rwy 06. Do not confuse road south of arpt with the rwy. Skydiving ops in effect SR-SS daily. Parachute ldg north side of rwy between downwind and rwy, no effect on acft tko/ldg that follow traffic pattern. Use caution while in the pattern. Fence and road within primary surface north side.

AIRPORT MANAGER: (760) 901-4260

WEATHER DATA SOURCES: ASOS 127.8 (760) 439-9683.

COMMUNICATIONS: CTAF/UNICOM 122.725

RCO 122.1R 115.3T (SAN DIEGO RADIO)

Ⓡ **SOCAL APP/DEP CON** 127.3

CLEARANCE DELIVERY PHONE: For CD ctc SoCal Apch at 800-448-3724.

RADIO AIDS TO NAVIGATION: NOTAM FILE CRQ.

OCEANSIDE (H) VORTAC 115.3 OCN Chan 100 N33°14.44' W117°25.06' 097° 3.6 NM to fld. 52/15E.

VOR portion unusable:
227°-265° byd 20 NM

