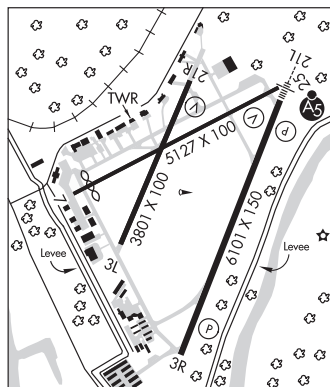


**CINCINNATI MUNI/LUNKEN FLD** (LUK)(KLUK) 3 SE UTC-5(-4DT) N39°06.20' W84°25.12'CINCINNATI  
H-10G, L-27E  
IAP, AD

483 B LRA Class IV, ARFF Index A NOTAM FILE LUK

**RWY 03R-21L:** H6101X150 (ASPH-GRVD) S-60, D-70, 2S-88,  
2D-140 PCN 42 R/C/X/T HIRL**RWY 03R:** REIL. PAPI(P4R)—GA 3.0° TCH 44'. RVR-R Tree.**RWY 21L:** MALSR. PAPI(P4L)—GA 3.0° TCH 39'. RVR-T Trees.**RWY 07-25:** H5127X100 (ASPH-GRVD) S-11, D-20, 2D-55  
PCN 38 R/C/X/T MIRL**RWY 07:** Thld dspclcd 439'. Tree.**RWY 25:** VASI(V4L)—GA 3.0° TCH 40'.**RWY 03L-21R:** H3801X100 (ASPH) S-11 PCN 6 F/C/Y/T MIRL**RWY 03L:** Trees.**RWY 21R:** VASI(V4L)—GA 4.0° TCH 46'. P-line.**RUNWAY DECLARED DISTANCE INFORMATION****RWY 03R:**TORA-6101 TODA-6101 ASDA-6101 LDA-6101**RWY 21L:**TORA-6101 TODA-6101 ASDA-6101 LDA-6101**SERVICE:** S4 FUEL 100LL, JET A+ OX 1 LGT When twr clsd ACTIVATE  
or incr instst MALSR Rwy 21L, HIRL Rwy 03R-21L—CTAF. HIRL Rwy  
03R-21L preset on med ints. Rwsy 03L-21R and Rwy 07-25 PCL  
unavbl. Rwy 03R PAPI unusbl byd 7° left of cntrln. Rotating bcn located  
1.7 NM E of arpt.**NOISE:** Noise abatement procs in efct call amgr. Acft maint runups rstrd btn  
0200-1200Z†.**AIRPORT REMARKS:** Attended continuously. Deer and birds on and invof arpt. Fuel A+ C513-871-2020. When twr closed use  
CTAF. Clsd to scheduled ACR ops greater than 9 pax seats. 48 hr PPR for unsched ACR ops with gtr than 30 passenger  
seats call amgr. Rwy 03L-21R clsd to unsked acf ops gtr than 30 pax seats. Rwy 07-25 clsd to unsked acf ops gtr than  
30 pax seats. AER Rwy 25 and Rwy 21L are closely lctd. Verify correct rwy with compass hdg bfr dep. Twy D, E, G, & H  
clsd to unsked acf ops gtr than 30 pax seats. Twy H not visible from twr, contact ground control. Arpt sfc cond unmon dly  
0400-1200Z†, Nov 1—Mar 31. Rwy 03L-21R cracks and surface variations. Ldg fee. Flight Notification Service  
(ADCUS) available.**AIRPORT MANAGER:** 513-352-6340**WEATHER DATA SOURCES:** ASOS (513) 321-6291**COMMUNICATIONS:** CTAF 118.7 ATIS 120.25 UNICOM 122.95

® APP/DEP CON 121.0

**LUNKEN TOWER** 118.7 133.925 (1200-0400Z†) **CLNC DEL** 124.9 (use when twr closed)**GND CON/CLNC DEL** 121.96**AIRSPACE:** CLASS D svc 1200-0400Z†; other times CLASS E.**VOR TEST FACILITY (VOT)** 108.4**RADIO AIDS TO NAVIGATION:** NOTAM FILE CVG.(L) **VORTACW** 117.3 CVG Chan 120 N39°00.96' W84°42.20' 072° 14.3 NM to fld. 878/4W.ILS/DME 110.9 I-LUK Chan 46 Rwy 21L. Class IA. Localizer backcourse unusable byd 10 NM. ILS/DME  
unmonitored when twr clsd. DME backcourse unusable byd 10 NM. DME unusable byd 25° left of course. DME  
backcourse unusable byd 10° left and 10° right of course. Localizer backcourse unusable byd 15° left and 15 right of  
course.**COMM/NAV/WEATHER REMARKS:** Emerg frequency 121.5 not avbl at twr.**CINCINNATI WEST** (See HARRISON on page 276)**CINCINNATI/NORTHERN KENTUCKY INTL** (See COVINGTON on page 265)**CIRCLEVILLE****PICKAWAY CO MEML** (CYO)(KCYO) 5 S UTC-5(-4DT) N39°30.96' W82°58.93'CINCINNATI  
L-29A  
IAP

685 B NOTAM FILE DAY

**RWY 01-19:** H4346X75 (ASPH) S-30, D-40 MIRL 0.5% up N**RWY 01:** Trees.**RWY 19:** REIL. PAPI(P4R)—GA 3.0° TCH 24'.**SERVICE:** FUEL 100LL, JET A LGT ACTIVATE REIL Rwy 19; PAPI Rwy 19; MIRL—CTAF.**AIRPORT REMARKS:** Attended Mon-Sat 1300-1900Z†, Sun 1300-1700Z†. Fuel available 24/7 with credit card.**AIRPORT MANAGER:** (740) 412-1128**COMMUNICATIONS:** CTAF/UNICOM 122.7**YELLOW BUD RCO** 112.5T (DAYTON RADIO)

® COLUMBUS APP/DEP CON 134.0

**CLEARANCE DELIVERY PHONE:** For CD etc Columbus Apch at 614-338-8537

CONTINUED ON NEXT PAGE

EC, 7 OCT 2021 to 2 DEC 2021

## CONTINUED FROM PRECEDING PAGE

RADIO AIDS TO NAVIGATION: NOTAM FILE DAY.

APPLETON (H) VORTAC 116.7 APE Chan 114 N40°09.06' W82°35.30' 212° 42.2 NM to fld. 1354/6W.

TACAN AZM/DME unusable:  
183°-188° byd 20 NM blo 3,000'

YELLOW BUD (T) VORW 112.5 XUB N39°31.61' W82°58.68' at fld. 689/5W.

CLERMONT CO (See BATAVIA on page 249)

## CLEVELAND

BURKE LAKEFRONT (BKL)(KBKL) 1 N UTC-5(-4DT) N41°31.07' W81°40.96'

584 B ARFF Index—See Remarks NOTAM FILE BKL

RWY 06L-24R: H6604X150 (ASPH-GRVD) S-93, D-113, 2S-144,  
2D-170 PCN 84 F/C/X/T HIRL

RWY 06L: REIL. PAPI(P4R)—GA 3.0° TCH 45'. Thld dspclcd 178'.

RWY 24R: MALSF. PAPI(P4R)—GA 3.0° TCH 42'. Thld dspclcd 600'.  
Bldg. Rgt tfc.

RWY 06R-24L: H5197X100 (ASPH-GRVD) S-43, D-50, 2D-82

PCN 63 F/C/X/T HIRL

RWY 06R: Thld dspclcd 275'.

RWY 24L: REIL. Antenna. Rgt tfc.

RUNWAY DECLARED DISTANCE INFORMATION

RWY 06L:TORA-6503 TODA-6503 ASDA-6503 LDA-6325

RWY 06R:TORA-5199 TODA-5199 ASDA-5199 LDA-4924

RWY 24L:TORA-5199 TODA-5199 ASDA-5199 LDA-5199

RWY 24R:TORA-6603 TODA-6603 ASDA-6603 LDA-6003

ARRESTING GEAR/SYSTEM

RWY 24R: EMAS

SERVICE: S4 FUEL 100LL, JET A OX 1, 2 LGT When ATCT clsd acctv  
MALSF Rwy 24R—CTAF. HIRL Rwy 06L-24R preset med instst, to  
incr instst rdo req on UNICOM. PAPI Rwy 06L unusable 5° right of  
centerline. PAPI Rwy 24R unusable byd 8° left of course.

AIRPORT REMARKS: Attended continuously. Birds and waterfowl on and invof airport. 72' ship crane 1300' southwest of Rwy 06R. Class IV ARFF Index A. Clsd to skedd acr ops grtr than 9 pax seats. PPR for unsked acr ops with more than 30 pax seats call amgr. Rwy 06R-24L clsd to unsked acr ops grtr than 30 pax seats; clsd when ATCT clsd. Rwy 06L-24R and Rwy 06R-24L apch surfaces have navigable waterways creating possible vessel obstruction areas—check local NOTAMS for current activity; vessel height; etc. Ldg fee. Fee schedule based on number of engines and gross weight. Flight Notification Service (ADCUS) avbl 24 hrs Mon-Fri reg for svc on Sat; Sun and holidays must be made prior to 2130Z† on Fri; 2 hrs advance notice req call 216-267-3600. Private acct and general aviation only.

AIRPORT MANAGER: 216-781-6411

WEATHER DATA SOURCES: ASOS (216) 241-6904 LAWRS.

COMMUNICATIONS: CTAF 124.3 ATIS 125.25 UNICOM 122.95

Ⓡ CLEVELAND APP/DEP CON 125.35

TOWER 124.3 (1200Z† Mon to 0400Z† Fri, 1200-0400Z† Sat, 1300-0500Z† Sun) GND CON 121.9

CLNC DEL 121.9 (When twr clsd)

CLEARANCE DELIVERY PHONE: For CD when ATCT clsd ctc Cleveland Apch at 216-352-2323.

AIRSPACE: CLASS D svc 1200Z† Mon to 0400Z† Fri, 1200-0400Z† Sat, 1300-0500Z† Sun; other times CLASS G.

RADIO AIDS TO NAVIGATION: NOTAM FILE CLE.

CHARDON (H) VORW/DME 112.7 CXR Chan 74 N41°31.02' W81°09.79' 275° 23.4 NM to fld. 1317/5W.

VOR portion unusable:

074°-084° byd 10 NM blo 3,300'

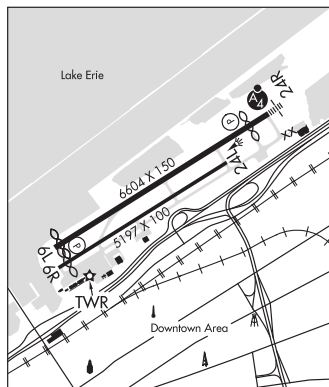
085°-099° byd 10 NM blo 11,000'

104°-180° byd 10 NM blo 6,000'

357°-073° byd 10 NM blo 11,000'

ILS/DME 109.75 I-BFT Chan 34(Y) Rwy 24R. Class IE. DME unusable byd 030° right of course.

COMM/NAV/WEATHER REMARKS: Emerg frequency 121.5 not available at twr.



DETROIT  
H-10G, L-30G  
IAP, AD