

OSHKOSH

WITTMAN RGNL (OSH)(KOSH) P (ARNG) 2 S UTC-6(-5DT) N43°59.07' W88°33.42'

CHICAGO
H-2K, L-28H
IAP, AD

808 B NOTAM FILE OSH

RWY 18-36: H8002X150 (CONC-GRVD) S-65, D-85, 2S-107, 2D-130 HIRL

RWY 18: REIL. PAPI(P4L)—GA 3.0° TCH 47'. RVR-R Antenna.

RWY 36: MALSR. PAPI(P4L)—GA 3.0° TCH 52'. RVR-T Tree. 0.3% down.

RWY 09-27: H6179X150 (CONC-GRVD) S-75, D-125, 2S-159, 2D-185 HIRL 0.4% up W

RWY 09: PAPI(P4L)—GA 3.0° TCH 50'. Tree.

RWY 27: REIL. PAPI(P4L)—GA 3.0° TCH 47'. Thld dsplcd 531'. Tree.

RWY 05-23: H3697X75 (ASPH) AUW-50 0.4% up SW

RWY 05: Trees.

RWY 23: Thld dsplcd 274'. Pole.

RWY 13-31: H3061X75 (ASPH) AUW-50

RWY 13: Tree.

RWY 31: Pole.

RUNWAY DECLARED DISTANCE INFORMATION

RWY 09: TORA-6179 TODA-6179 ASDA-5648 LDA-5648

RWY 27: TORA-6179 TODA-6179 ASDA-6179 LDA-5648

SERVICE: S4 FUEL 100LL, JET A+ OX 1, 2 LGT When twr clsd PAPI

Rwy 09 opr consly and HIRL Rwy 18-36 preset on medium ints, to increase ints and ACTIVATE MALSR Rwy 36, PAPI Rwy 27, HIRL Rwy 09-27 and Rwy 18-36—CTAF.

AIRPORT REMARKS: Attended 1300-0200Z†. For aprt attendant other hrs call 920-236-7827. Fuel A+ and 100LL avbl 1300-0100Z† Mon-Fri, 1400-2300Z† Sat-Sun. C920-236-7827 (after hours fee \$50). Birds on and invof aprt. Rwys 13-31, Rwys 05-23, Twys C, H & P not avbl to acft with more than 30 passenger seats. Rwy 23 and Rwy 27 apch ends are closely aligned, verify correct rwy and compass heading prior to dep. Rwys 05-23 & 13-31 maximum weight bearing capacity for any acft is 50,000 lbs.

AIRPORT MANAGER: 920-236-4930

WEATHER DATA SOURCES: ASOS (920) 426-1644 LAWRS.

COMMUNICATIONS: CTAF 118.5 ATIS 125.9 UNICOM 122.95

RCO 122.1R 122.25 116.8T (GREEN BAY RADIO)

® MILWAUKEE APP/DEP CON 127.0

OSHKOSH TOWER 118.5 (1200-0400Z) GND CON 132.3

CLEARANCE DELIVERY PHONE: For CD if una to ctc on FSS freq, ctc Chicago ARTCC at 630-906-8921.

AIRSPACE: CLASS D svc 1200-0400Z; other times CLASS G.

RADIO AIDS TO NAVIGATION: NOTAM FILE OSH.

OSHKOSH (H) VORTAC 116.75 OSH Chan 114(Y) N43°59.43' W88°33.36' at fld. 781/2E.

TACAN AZIMUTH unusable:

166°-174° byd 10 NM

DME unusable:

012°-018° byd 38 NM

196°-257° byd 35 NM blo 3,000'

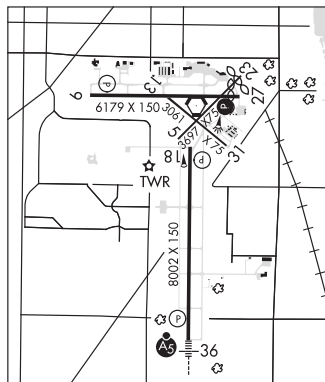
VOR unusable:

199°-250° byd 35 NM blo 3,000'

POBER NDB (LOMW) 395 OS N43°52.43' W88°33.46' 003° 6.6 NM to fld. 851/3W.

ILS 110.5 I-OSH Rwy 36. Class IA. LOM POBER NDB. ILS unmonitored when ATCT clsd. LOM/OM unmonitored.

Localizer backcourse unusable byd 20° right of course.



PALMYRA MUNI (88C) 0 NW UTC-6(-5DT) N42°53.01' W88°36.00'

CHICAGO

851 NOTAM FILE GRB

RWY 09-27: 2800X200 (TURF) LIRL

RWY 09: Trees.

RWY 27: Tree.

SERVICE: LGT ACTIVATE LIRL Rwy 09-27—CTAF.

AIRPORT REMARKS: Unattended. Crane 190' AGL 300' south of AER 09 SR-SS. Rwy 09-27 marked by yellow cones.

AIRPORT MANAGER: 262-361-2911

COMMUNICATIONS: CTAF 122.9

CLEARANCE DELIVERY PHONE: For CD ctc Chicago ARTCC at 630-906-8921.