

CONTINUED FROM PRECEDING PAGE

RADIO AIDS TO NAVIGATION: NOTAM FILE MCI.

KANSAS CITY (H) VORTAC 113.25 MCI Chan 79(Y) N39°17.12' W94°44.22' 140° 11.8 NM to fld. 1017/5E.

NAPOLÉON (L) VORTAC 114.0 ANX Chan 87 N39°05.73' W94°07.73' 267° 21.7 NM to fld.

878/7E. NOTAM FILE COU.

TACAN AZIMUTH & DME unusable:

220°-230° byd 35 NM blo 2,000'

KENZY NDB (LOM) 344 MK N39°13.25' W94°33.86' 192° 6.0 NM to fld. Autopilot cpd apch na blw 1,013' MSL

ILS/DME 111.75 I-GQR Chan 54(Y) Rwy 03. Glideslope unusable for cpd apchs blw 1,013' MSL.

ILS/DME 109.9 I-MKC Chan 36 Rwy 19. Class IE. LOM KENZY NDB. Autopilot cpd apch na blw 1,013' MSL

COMM/NAV/WEATHER REMARKS: Interference from FM radio station may affect communication in the immediate vicinity of arpt.

Freq 121.5 not avbl at twr or FSS.

KANSAS CITY INTL (MCI)(KMCI) 15 NW UTC-6(-5DT) N39°17.86' W94°42.83'

KANSAS CITY

1027 B LRA Class I, ARFF Index C NOTAM FILE MCI

H-5C, L-10J, A

RWY 01L-19R: H10801X150 (ASPH-GRVD) S-75, D-204, 2S-175,

IAP, AD

2D-400, 2D/2D2-450 PCN 93 F/D/W/T HIRL CL

RWY 01L: MALS. TDZL. PAPI(P4L)—GA 3.0° TCH 78'. RVR-TMR

0.4% down.

RWY 19R: ALSF2. TDZL. PAPI(P4R)—GA 3.0° TCH 80'. RVR-TMR Rgt

tfc. 0.3% up.

RWY 09-27: H9501X150 (ASPH-GRVD) S-75, D-125, 2S-159,

2D-180, 2D/2D2-260 PCN 65 F/D/W/T HIRL

RWY 09: MALS. RVR-TR

RWY 27: MALS. PAPI(P4L)—GA 3.0° TCH 72'. RVR-TR Rgt tfc.

0.3% down.

RWY 01R-19L: H9500X150 (CONC-GRVD) S-75, D-204, 2S-175,

2D-400, 2D/2D2-450 PCN 71 R/B/W/T HIRL CL

RWY 01R: ALSF2. TDZL. PAPI(P4R)—GA 3.0° TCH 74'. RVR-TMR

RWY 19L: MALS. TDZL. RVR-TMR 0.6% up.

RUNWAY DECLARED DISTANCE INFORMATION

RWY 01L:TORA-10801 TODA-10801 ASDA-10801 LDA-10801

RWY 01R:TORA-9500 TODA-9500 ASDA-9500 LDA-9500

RWY 09: TORA-9501 TODA-9501 ASDA-9501 LDA-9501

RWY 19L:TORA-9500 TODA-9500 ASDA-9500 LDA-9500

RWY 19R:TORA-10801 TODA-10801 ASDA-10801 LDA-10801

RWY 27: TORA-9501 TODA-9501 ASDA-9501 LDA-9501

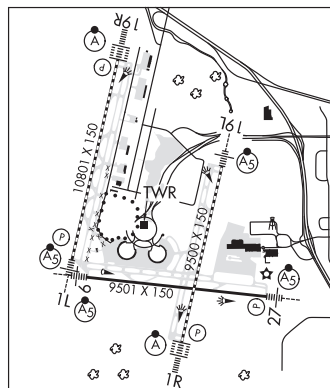
SERVICE: FUEL 100LL, JET A

NOISE: Noise abatement procedures in effect 0400-1200Z± with landing on Rwy 01L and 19L; takeoffs on Rwy 01R and 19R.

AIRPORT REMARKS: Attended continuously. Waterfowl on and in/ov arpt. ASSC in use. Operate transponders with altitude reporting mode and ADS-B (if equipped) enabled on all airport surfaces. Ctl twr has limited visibility on numerous gates at all 3 terminals. Windshear alert system on arpt. Pushback clearance required at gates 43 thru 57 in terminal B and gates 68 thru 77 in terminal C, pushback from these gates enters Twy D. When using hi-speed exits C5 and C6 continue until first parallel twy, then use extreme care when turning in excess of 90 degrees. Design group V and VI rqr an arpt escort on Twy D between Twy J and Twy L. Twy B1 btn Twy B and FEDEX apron; cockpit over cntrln steering required. PPR to park at airline gates ctc respective airline. No acft parking on postal apron. Flight Notification Service (ADCUS) avbl at gate 90. Military acft may be charged ramp/parking fees. Twy L btn Twy L1 and Twy D wingspan restriction of 118'. Twy C2 btn Twy C3 and Twy C1 wingspan restriction of 118'.

AIRPORT MANAGER: 816-243-5248

WEATHER DATA SOURCES: ASOS (816) 329-2808 LLWAS. TDWR.



CONTINUED ON NEXT PAGE

CONTINUED FROM PRECEDING PAGE

COMMUNICATIONS: D-ATIS 128.375 816-329-2725 UNICOM 122.95

RCO 122.65 (COLUMBIA RADIO)

Ⓡ APP CON 120.95

INTERNATIONAL TOWER 128.2 GND CON 121.8 CLNC DEL 135.7

Ⓡ DEP CON 124.7 (191°-009°) 123.95 (010°-190°)

CPDLC (LOGON KUSA)

PDC

AIRSPACE: CLASS B See VFR Terminal Area Chart.

RADIO AIDS TO NAVIGATION: NOTAM FILE MCI.

(H) VORTACW 113.25 MCI Chan 79(Y) N39°17.12' W94°44.22' 051° 1.3 NM to fld. 1017/5E.

ILS/DME 110.5 I-DOT Chan 42 Rwy 01L. Class IT.

ILS/DME 110.75 I-PVL Chan 44(Y) Rwy 01R. Class IIIE.

ILS/DME 109.7 I-RNI Chan 34 Rwy 09. Class IB. LOM unmonitored.

ILS/DME 109.55 I-DYH Chan 32(Y) Rwy 19L. Class IE.

ILS/DME 109.1 I-PAJ Chan 28 Rwy 19R. Class IIIE.

ILS/DME 109.7 I-UQY Chan 34 Rwy 27. Class IE.

KENNETT MEML (TKX)(KTKX) 1 SE UTC-6(-5DT) N36°13.55' W90°02.20'

262 B NOTAM FILE STL

RWY 02-20: H5000X75 (CONC) S-30, D-42 MIRL

RWY 02: REIL. PAPI(P4L)—GA 3.0° TCH 42'. Tree. Rgt tfc.

RWY 20: REIL. PAPI(P4L)—GA 3.0° TCH 42'. Tree.

RWY 18-36: H3012X75 (ASPH) S-10 MIRL

RWY 36: Trees. Rgt tfc.

SERVICE: S4 FUEL 100LL, JET A LGT MIRL Rwy 18-36 and Rwy

02-20 on low ints dusk-0900Z‡, to incr ints and ACTIVATE MIRL Rwy

18-36 and Rwy 02-20 and REIL Rwy 02, Rwy 20 from

0500Z‡-dawn—CTAF. PAPI Rwy 02 and Rwy 20 on 24 hrs.

AIRPORT REMARKS: Attended Mon-Sat 1400-2300Z‡, Sun 1900-2300Z‡.

AIRPORT MANAGER: 573-888-5846

WEATHER DATA SOURCES: AWOS-3PT 119.05 (573) 888-9640.

COMMUNICATIONS: CTAF/UNICOM 122.8

MEMPHIS CENTER APP/DEP CON 120.075

CLEARANCE DELIVERY PHONE: For CD ctc Memphis ARTCC at

901-368-8453/8449.

RADIO AIDS TO NAVIGATION: NOTAM FILE STL.

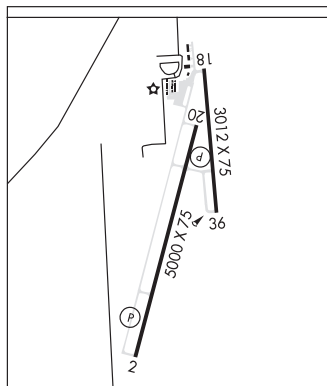
MALDEN (L) VORTACW 111.2 MAW Chan 49 N36°33.31'

W89°54.69' 194° 20.6 NM to fld. 280/3E.

ST LOUIS

H-J6, L-16H

IAP



KENZY N39°13.25' W94°33.86' NOTAM FILE MKC.

NDB (LOM) 344 MK 192° 6.0 NM to Charles B Wheeler Downtown. Autopilot cpd apch na blw 1,013' MSL

KANSAS CITY

A

KINGSLEY AIRFIELD (See MILLER on page 246)