

**TETERBORO** (TEB)(KTEB) 1 SW UTC-5(-4DT) N40°51.01' W74°03.65'  
 8 B TPA—See Remarks LRA ARFF Index—See Remarks NOTAM FILE TEB  
**RWY 01-19:** H7000X150 (ASPH-GRVD) S-50, D-100 PCN 35 F/C/X/T

NEW YORK  
 COPTER  
 H-101, 12J, L-33B, 34H  
 IAP, AD

**RWY 01:** REIL. VASI(V4R)—GA 3.46° TCH 59'. Thld dsplcd 771'. Tree.  
**RWY 19:** TDZL. REIL. PAPI(P4L)—GA 3.0° TCH 57'. Thld dsplcd 763'. Bldg.  
**RWY 06-24:** H6013X150 (ASPH-GRVD) S-50, D-100 PCN 35 F/C/X/T  
 HIRL CL  
**RWY 06:** MALSR. TDZL. REIL. RVR-TR Tree.  
**RWY 24:** REIL. PAPI(P4L)—GA 3.2° TCH 46'. RVR-TR Tree.

**LAND AND HOLD—SHORT OPERATIONS**

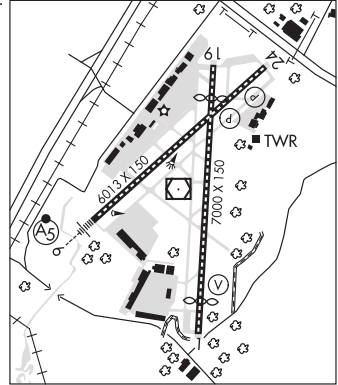
LDG RWY	HOLD—SHORT POINT	AVBL LDG DIST
RWY 01	06-24	4550
RWY 06	01-19	3750

**RUNWAY DECLARED DISTANCE INFORMATION**

<b>RWY 01:</b> TORA-7000 TODA-7000 ASDA-6932 LDA-6161
<b>RWY 06:</b> TORA-6013 TODA-6013 ASDA-6013 LDA-6013
<b>RWY 19:</b> TORA-7000 TODA-7000 ASDA-7000 LDA-6230
<b>RWY 24:</b> TORA-6013 TODA-6013 ASDA-6013 LDA-6013

**ARRESTING GEAR/SYSTEM**

**RWY 06:** EMAS  
**RWY 19:** EMAS  
**RWY 24:** EMAS



**SERVICE:** S4 FUEL 100LL, JET A OX 1, 2, 3, 4 LGT Rwy 01-19 dsplcd thld centerline lgts OTS indef.

**NOISE:** Acft and helicopter noise abatement rules in effect, ctc noise abatement office 201-393-0399/288-1775 for copy of procedures and rules prior to arrival. Rwy 24 noise critical rwy maximum noise limit of 80 db between 0300-1200Z† and 90 db all other hrs. NOTE: See Special Notices—Terminal Area Graphic Notice.

**AIRPORT REMARKS:** Attended continuously. CLOSED to motorless acft, uncontrolled acft and ultralight activity exc by prior permission. Deer and bird activity on and in/ov arpt. All acft avoid hospital 1.7 miles north of Rwy 01-19. Helicopter ops over residential areas blo 1000' MSL should be avoided. Daily continuous construction activity all quadrants. Stage I acft not permitted to opr at Teterboro Arpt. Acft capable of opr abv 100,000 lbs must submit certification to arpt manager verifying acft opr weight is less than 100,000 lbs. Ctc arpt ops at 201-288-1775 for forms. ARFF Index B equipment coverage provided. TPA-1500 (1492) for large/turbine acft, 1000 (992) for all others. Rwy 19 VGSJ and RNAV glidepath not coincident. RNAV (GPS) X Rwy 06 is prim RNAV apch to Rwy 06. Ldg fee. Flight Notification Service (ADCUS) available. NOTE: See Special Notices—Terminal Area Graphic Notice.

**AIRPORT MANAGER:** 201-288-1775

**WEATHER DATA SOURCES:** ASOS (201) 393-0855

**COMMUNICATIONS:** D-ATIS 132.85 114.2 201-288-1690

RCO 122.2 (MILLVILLE RADIO).

Ⓡ NEW YORK APP CON 127.6 RAMP CTL 120.675

TOWER 119.5 125.1 GND CON 121.9 CLNC DEL 128.05

Ⓡ NEW YORK APP/DEP CON 119.2 126.7

CPDLC (LOGON KUSA)

PDC

**AIRSPACE:** CLASS D.

**RADIO AIDS TO NAVIGATION:** NOTAM FILE TEB.

(T) VORW/DME 108.4 TEB Chan 21 N40°50.92' W74°03.73' at fld. 3/11W.

DME unusable:

060°-080° byd 22 NM blo 2,500'

081°-120° blo 4,000'

121°-180° blo 3,000'

236°-246°

VOR unusable:

081°-120° blo 4,000'

121°-180° blo 3,000'

236°-246°

**TORBY NDB (LOM)** 214 TE N40°48.26' W74°07.95' 062° 4.3 NM to fld. LOM unusable byd 10 NM.

**ILS** 108.9 I-TEB Rwy 06. Class IE. LOM TORBY NDB. LOM unusable byd 10 NM. LOC unusable byd 15° left of course.

**ILS/DME** 110.15 I-TJL Chan 38(Y) Rwy 19. Class IE. DME unusable byd 22° left of course.

**COMM/NAV/WEATHER REMARKS:** For radar svc blo 1800' ctc Teterboro twr frequency 119.5. Arpt ops frequency 130.575.