

**KEATING** N41°12.90' W78°08.57' NOTAM FILE AOO.  
(H) **VORTACW** 116.0 ETG Chan 107 241° 15.9 NM to Clearfield-Lawrence. 2250/10W.

**DETROIT**  
H-10H, L-30I

**KELLER BROTHERS** (See LEBANON on page 283)

## KRALLTOWN

**BERMUDIAN VALLEY AIRPARK** (Ø7N) 2 W UTC-5(-4DT) N40°01.01' W77°00.23'

**DETROIT**

470 NOTAM FILE IPT

**RWY 16-34:** 2200X100 (TURF)

**RWY 16:** Thld dspcd 370'. Trees.

**RWY 34:** Thld dspcd 100'. Trees.

**SERVICE:** S4

**AIRPORT REMARKS:** Attended irregularly. Ultralight activity on and invof arpt. Fld soft after prolonged rain. Rwy 16-34 rwy ends and edges mkd with w cones. Rwy 16 and Rwy 34 dplcd thlds marked with 3 white cones each side of rwy and 2 white tires east side of rwy.

**AIRPORT MANAGER:** (717) 858-5063

**COMMUNICATIONS:** CTAF 122.9

**CLEARANCE DELIVERY PHONE:** For CD ctc Harrisburg Apch at 800-932-0712.

**LAKEHILL** (See MARS on page 285)

**LANCASTER** (LNS)(KLNS) 4 N UTC-5(-4DT) N40°07.34' W76°17.66'

**NEW YORK**

403 B Class II, ARFF Index A NOTAM FILE LNS

H-10H, 12J, L-29E, 34G, A  
IAP, AD

**RWY 08-26:** H6933X150 (ASPH-GRVD) S-65, D-92, 2S-117,

2D-146 HIRL 0.3% up W

**RWY 08:** MALSR. PAPI(P4R)—GA 3.0° TCH 40'. Thld dspcd 357'. Road.

**RWY 26:** PAPI(P4L)—GA 3.0° TCH 47'. Thld dspcd 59'. Tree.

**RWY 13-31:** H4102X100 (ASPH) S-65, D-92, 2S-117, 2D-146

MIRL

**RWY 13:** PAPI(P2R)—GA 3.0° TCH 40'. Tree.

**RWY 31:** REIL.

### LAND AND HOLD-SHORT OPERATIONS

LDG RWY	HOLD-SHORT POINT	AVBL LDG DIST
RWY 26	13-31	5190

### RUNWAY DECLARED DISTANCE INFORMATION

<b>RWY 08:</b> TORA-6934 TODA-6934 ASDA-6475 LDA-6118
<b>RWY 13:</b> TORA-4102 TODA-4102 ASDA-4102 LDA-4102
<b>RWY 26:</b> TORA-6934 TODA-6934 ASDA-6177 LDA-6118
<b>RWY 31:</b> TORA-4102 TODA-4102 ASDA-4102 LDA-4102

**SERVICE:** S4 FUEL 100LL, JET A OX4 LGT When ATCT clsd

ACTVT MALSR Rwy 08; REIL Rwy 31; HIRL Rwy 08-26; MIRL Rwy 13-31 and twy lgts—CTAF. Rwy 13 VGSI and glidepath not coincident. Rwy lgts and MALSR unmonitored when twr clsd.

**AIRPORT REMARKS:** Attended Mon—Fri 1100-0200Z†, Sat 1100-2300Z†, Sun 1300-0200Z†. PPR 24 hrs for air carrier ops with more than 30 passenger seats, call arpt manager 717-569-1221. Rwy/Twy conditions not monitored outside of attendance hours.

**AIRPORT MANAGER:** 717-569-1221

**WEATHER DATA SOURCES:** ASOS 125.675 (717) 569-8860.

**COMMUNICATIONS:** CTAF 120.9 ATIS 125.675 UNICOM 122.95

Ⓡ **HARRISBURG APP/DEP CON** 126.45

**TOWER** 120.9 (1100-0400Z†) **GND CON** 121.8

**CLEARANCE DELIVERY PHONE:** For CD when ATCT clsd, ctc Harrisburg Apch at 800-932-0712.

**AIRSPACE:** CLASS D svc 1100-0400Z†; other times CLASS E.

**RADIO AIDS TO NAVIGATION:** NOTAM FILE LNS.

(T) **VOR/DME** 117.3 LRP Chan 120 N40°07.20' W76°17.48' at fld. 399/9W.

VOR unusable:

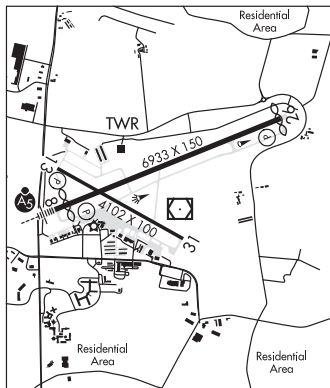
195°-273° byd 21 NM blo 9,000'

DME unusable:

180°-190°

320°-030° byd 31 NM blo 8,000'

ILS 108.7 I-LNS Rwy 08. Class IE. Unmonitored when ATCT clsd.



**LATLE** N40°10.69' W77°00.34' NOTAM FILE CXY.  
**NDB (LOWW)** 219 CX 083° 7.5 NM to Capital City. 505/11W.

**NEW YORK**