

WILLIAMSPORT RGNL (IPT)(KIPT) 4 E UTC-5(-4DT) N41°14.50' W76°55.31'

NEW YORK
H-10H, 12L, L-30J
IAP, AD

528 B ARFF Index—See Remarks NOTAM FILE IPT

RWY 09-27: H6825X150 (ASPH-GRVD) S-65, D-100, 2S-127, 2D-190 PCN 43 F/A/X/T HIRL

RWY 09: REIL. PAPI(P4L)—GA 3.0° TCH 49'. Trees.

RWY 27: MALSR. Thld dspcld 255'. Trees. Rgt tfc.

RWY 12-30: H4273X150 (ASPH) S-200, D-200, 2S-175, 2D-400 PCN 46 F/A/X/T MIRL

RWY 12: PAPI(P2L)—GA 3.75° TCH 45'. Trees.

RWY 30: PAPI(P2L)—GA 4.0° TCH 41'. Trees. Rgt tfc.

RUNWAY DECLARED DISTANCE INFORMATION

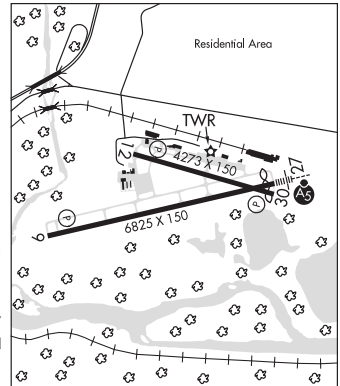
RWY 09: TORA-6825 TODA-6825 ASDA-6073 LDA-6073

RWY 12: TORA-4273 TODA-4273 ASDA-4273 LDA-4273

RWY 27: TORA-6825 TODA-6825 ASDA-6318 LDA-6063

RWY 30: TORA-4273 TODA-4273 ASDA-4273 LDA-4273

SERVICE: S4 FUEL 100LL, JET A OX1 LGT When ATCT CLSD ACTVT MALSR RWY 27; REIL RWY 09; HIRL RWY 09-27; MIRL RWY 12-30; and TWY LGTS—CTAF. PAPI RWYS 09, 12 and 30 OPER CONSLY. MIRL RWY 12-30, click three times for medium INTST. RWY 09 PAPI baffled UNUSBL BYD 2 DEGS R of CRS. RWY 30 PAPI baffled UNUSBL BYD 7 DEGS L of CRS.



AIRPORT REMARKS: Attended 1130-0330Z†. After hrs by prior coordination call 570-368-2651. Fuel and svcs avbl 1030-0300Z†, after hrs by prior coordination call 570-368-2651. Arprt clsd to banner towing ops. Twy J clsd to acft with wing span over 78'. Class I, ARFF Index A. PPR 12 hrs for unscheduled air carrier ops with more than 30 passenger seats 0400-1100Z† daily call arprt manager 570-368-2444. Index B coverage avbl upon req call arprt manager 570-368-2444. Deer and birds on and invof arprt especially AER 27 and AER 30. Unlgtg crane 90' AGL 0.5 miles SE AER 30 permanently. For landside access from arprt after hrs use computerized gate system at east end or FBO apron. Cold temperature airport. Altitude correction required at or below -14C. Ldg fee.

AIRPORT MANAGER: 570-368-2444

WEATHER DATA SOURCES: ASOS 125.225 (570) 368-3420.

COMMUNICATIONS: CTAF 119.1 UNICOM 122.95

RCO 122.2 (WILLIAMSPORT RADIO)

® NEW YORK CENTER APP/DEP CON 124.9

TOWER 119.1 (1130-0330Z†) GND CON 121.9

CLEARANCE DELIVERY PHONE: For CD if una to ctc on FSS freq, ctc New York ARTCC at 631-468-1425.

AIRSPACE: CLASS D svc 1130-0330Z†; other times CLASS E.

RADIO AIDS TO NAVIGATION: NOTAM FILE IPT.

(L) VORW/DME 114.4 FQM Chan 91 N41°20.31' W76°46.49' 238° 8.8 NM to fld. 2098/9W.

ILS/DME 110.1 I-IPT Chan 38 Rwy 27. Class IE. LOC unusable byd 028° left of course. DME unusable byd 028° left of course.

COMM/NAV/WEATHER REMARKS: When twr clsd New York Center provides Clnc Del on 124.9.

WINGS FLD (See PHILADELPHIA on page 294)

YARDLEY N40°15.20' W74°54.46' NOTAM FILE IPT.

NEW YORK
H-10L, L-34G, A

(L) VORW/DME 108.2 ARD Chan 19 082° 4.5 NM to Trenton Mercer. 294/10W.

VOR unusable:

020°-040°

195°-225° byd 25 NM blo 5,000'

250°-265° blo 3,500'

266°-280° byd 20 NM blo 5,000'

281°-300° byd 14 NM blo 6,000'

DME unusable:

225°-275° byd 25 NM blo 5,000'