

NORFOLK INTL (ORF)(KORF) 3 NE UTC-5(-4DT) N36°53.68' W76°12.07'

26 B LRA Class I, ARFF Index C NOTAM FILE ORF

RWY 05-23: H9001X150 (ASPH-CONC-GRVD) S-150, D-200,

2S-175, 2D-350, 2D/2D2-475 PCN 53 R/C/W/T HIRL CL

RWY 05: MALSR. PAPI(P4L)—GA 3.0° TCH 71'. RVR-T Thld dsplcd 1001'. Trees. Rgt tfc.

RWY 23: MALSR. PAPI(P4L)—GA 3.0° TCH 55'. RVR-R Pole.

RWY 14-32: H4876X150 (ASPH-GRVD) S-75, D-100, 2S-127

PCN 27 F/A/W/T MIRL

RWY 14: REIL. PAPI(P2L)—GA 3.0° TCH 36'. Thld dsplcd 575'. Tree. Rgt tfc.

RWY 32: REIL. PAPI(P2L)—GA 3.0° TCH 34'. Tree.

RUNWAY DECLARED DISTANCE INFORMATION

RWY 05: TORA-9001 TODA-9001 ASDA-8809 LDA-7809

RWY 14: TORA-4875 TODA-4875 ASDA-4875 LDA-4300

RWY 23: TORA-9001 TODA-9001 ASDA-8995 LDA-8995

RWY 32: TORA-4875 TODA-4875 ASDA-3900 LDA-3900

SERVICE: S2 FUEL 100LL, JET A OX 1, 2, 4

NOISE: Noise abatement procedures in effect.

AIRPORT REMARKS: Attended continuously. Parachute Jumping. Flocks of birds on and in/ov arpt. Intmt afld mowing ops Mar-Nov. Rwy 05-23 grvd 7300' X 130' standard grooving beginning 200' from AER 05. Ldg fee. Flight Notification Service (ADCUS) avbl.

AIRPORT MANAGER: 757-857-3344

WEATHER DATA SOURCES: ASOS (757) 460-9348 WSP.

COMMUNICATIONS: ATIS 127.15 (757) 464-1390

RCO 122.1R 116.9T (LEESBURG RADIO)

Ⓡ **APP CON** 118.9 (010°-080°) (180°-310°) 125.7(311°-009°)

TOWER 120.8 **GND CON** 121.9 **CLNC DEL** 118.5

Ⓡ **DEP CON** 125.2

AIRSPACE: CLASS C svc ctc **APP CON**.

RADIO AIDS TO NAVIGATION: NOTAM FILE ORF.

(H) **VORTAC** 116.9 ORF Chan 116 N36°53.51' W76°12.02' at fld. 20/7W.

VOR unusable:

325°-335° byd 10 NM blo 4,000'

325°-335° byd 20 NM

Byd 30 NM blo 2,500'

TACAN AZIMUTH unusable:

Byd 30 NM blo 2,500'

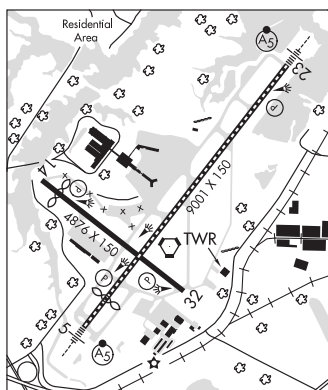
DME unusable:

Byd 30 NM blo 2,500'

INGLE NDB (LOMW) 329 OR N36°50.43' W76°15.08' 046° 4.0 NM to fld. 4/9W.

ILS/DME 109.1 I-ORF Chan 28 Rwy 05. Class IB. Glideslope unusable for coupled apch blw 744'.

ILS/DME 109.1 I-JZQ Chan 28 Rwy 23. Class IA.



WASHINGTON

H-101, 121, L-350, 36H

IAP, AD