

BALTIMORE

BALTIMORE/WASHINGTON INTL THURGOOD MARSHALL (BWI)(KBWI) 9S UTC-5(-4DT)

WASHINGTON

COPTER

H-10H, 12I, L-29E, 34F, 36I, A

IAP, AD

N39°10.54' W76°40.14'

143 B LRA Class I, ARFF Index D NOTAM FILE BWI

RWY 10-28: H10503X150 (ASPH-GRVD) S-80, D-220, 2D-1020, 2D/2D2-1340 PCN 105F/A/W/T HIRL CL

RWY 10: ALSF2. TDZL. PAPI(P4R)—GA 3.0° TCH 55'. RVR-TMR Thld dspclcd 550'. Tree.

RWY 28: MALS. PAPI(P4L)—GA 3.0° TCH 55'. RVR-TMR Thld dspclcd 700'. Tree. 0.3% up.

RWY 15R-33L: H9501X150 (ASPH-GRVD) S-80, D-220, 2D-675, 2D/2D2-890 PCN 70 F/A/W/T HIRL CL

RWY 15R: MALS. PAPI(P4R)—GA 3.0° TCH 73'. RVR-TMR Thld dspclcd 301'. Antenna.

RWY 33L: MALS. TDZL. PAPI(P4L)—GA 3.0° TCH 72'. RVR-TMR Thld dspclcd 500'. Tower.

RWY 15L-33R: H5000X100 (ASPH-GRVD) S-30, D-45 PCN 15 F/A/W/T HIRL 0.5% up NW

RWY 15L: REIL. PAPI(P4L)—GA 3.0° TCH 47'. RVR-TR Pole.

RWY 33R: MALS. REIL. PAPI(P4L)—GA 3.0° TCH 47'. RVR-TR Tree.

RUNWAY DECLARED DISTANCE INFORMATION

RWY 10: TORA-10503 TODA-10503 ASDA-10503 LDA-9953

RWY 15L: TORA-5000 TODA-5000 ASDA-5000 LDA-5000

RWY 15R: TORA-9501 TODA-9501 ASDA-8601 LDA-8301

RWY 28: TORA-10503 TODA-10503 ASDA-10503 LDA-9803

RWY 33L: TORA-9501 TODA-9501 ASDA-8801 LDA-8301

RWY 33R: TORA-5000 TODA-5000 ASDA-5000 LDA-5000

SERVICE: S4 FUEL 100LL, JET A OX 1, 2, 3, 4

NOISE: Noise Abatement procedures in effect, restriction for Rwy 15L-33R except for emergencies or mercy flights ctc AMGR for information.

AIRPORT REMARKS: Attended continuously. Deer and birds ocnlly on and invof arpt. Major const on arpt dly. Acft movement and parking areas subject to short ntc change/closure. For current info phone BWI ops ctr 410-859-7018. Rwy status lgts in operation. Practice lds and apchs by turbo-pwrd acft prohibited 0300-1100Z±. Practice lds and tkfs by B-747 acft prohibited Rwy 15R-33L. Rwy length avbl for Rwy 28 departures from Twy U is 9802'. ASDE-X in use. Operate transponders with altitude reporting mode and ADS-B (if equipped) enabled on all airport surfaces. Acft departing Rwy 28 exp dep from Twy U1. No apron parking for unscheduled air carriers. General aviation acft ctc UNICOM prior to arr at General Aviation ramp for security purposes. Midfield RVR sensor shared by Rwy 10-28 and Rwy 15R-33L. Taxiing prohibited btn concourse C and adjacent bldg structure SW of concourse C. Access to gate C12 must be via Twy A. Taxilanes T-1 and H, rstd to Group III acft with max wingspan of 118'. Twy A is rstd to group IV acft wingspan 171' or less. Twy T between Twy H and Twy E rstd to group IV acft with wingspan less than 171'. Twy T between Twy E and Twy B rstd to group V acft with wingspan less than 214', when group V acft are on Twy T, Twy A is rstd to max wingspan of 110'. Twy S, south of Twy P, rstd to acft 60,000 lbs and less. Dual parallel taxilanes have been added to the D/E alleyway, Taxilane N and Taxilane N1. Taxilane N is designated a Group V taxilane with max wingspan of 213'. Taxilane N1 is designated a Group IV taxilane with a max wingspan of 170'. Rwy 15L-33R rstd to acft producing less than 90 decibels exc for emergs. Continuous mowing ops adjacent all rwys and twys Apr through Nov. Distracting lgts (golf driving range) rgt side extdd cntrl Rwy 33L from apch end rwy to 1/4 mile final. Acft on visual apchs exp to maintain 3000' until 10 DME from BAL VORTAC, dep acft should exp turns based on Baltimore DME. Rwy 15R deice pad, position 1 rstd to acft with wingspan of 156' 1" or less and length of 180' 3" or less. Positions 2 and 3 are rstd to acft with a wingspan of 156' 1" or less. Position 3 is rstd to acft with a wingspan of 156' 1" or less and length of 180' 3" or less. Position 4 rstd to acft with wingspan of 213' or less and length of 229' 2" or less. Rwy 28 deice pad lane 1 rstd to acft with wingspan 171' or less, lane 2 rstd to acft with wingspan 135' or less, lane 3 is used by large acft maximum wingspan 215' and when in use lanes 2 and 4 are unavbl. Lanes 4, 5 and 6 are rstd to acft wingspan 135' or less. Concourse A alt deicing area is rstd to B737-800 size acft with winglets or smrl on spots 6, 7 and 8. B737-700 size acft with winglets or smaller are rstd to spots 6A, 7B and 8B. Ldg fee. Flight Notification Service (ADCUS) avbl.

AIRPORT MANAGER: 410-859-7018

WEATHER DATA SOURCES: ASOS (410) 691-1278 TDWR.

COMMUNICATIONS: D-ATIS 115.1 127.8 UNICOM 122.95

BALTIMORE RCO 122.2 (LEESBURG RADIO)

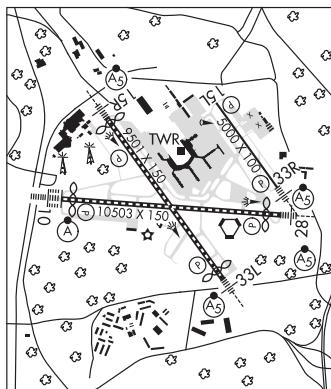
Ⓡ POTOMAC APP CON 119.0 (020°-130°) 119.7 (131°-180°) 124.55 (101°-130°) 128.7 (181°-019°) 119.0 (131°-180°) 119.7 (020°-130°) 125.525 (181°-019°)

BALTIMORE TOWER 119.4 GND CON 121.9 CLNC DEL 118.05

Ⓡ POTOMAC DEP CON 124.55 (East) 128.7 (West)

CPDLC (LOGON KUSA)

PDC



CONTINUED ON NEXT PAGE

NE, 7 OCT 2021 to 2 DEC 2021

CONTINUED FROM PRECEDING PAGE

AIRSPACE: CLASS B See VFR Terminal Area Chart.

RADIO AIDS TO NAVIGATION: NOTAM FILE BWI.

(L) VORTACW 115.1 BAL Chan 98 N39°10.26' W76°39.68' at fld. 150/11W.

TACAN AZIMUTH & DME unusable:

133°-155° byd 20 NM blo 10,000'

300°-349° byd 35 NM

TACAN DME unusable:

133°-155° byd 36 NM

VOR unusable:

133°-155° byd 20 NM blo 10,000'

197°-217° byd 17 NM

282°-292°

TACAN AZIMUTH unusable:

029°-042° byd 30 NM

180°-190° byd 17 NM

ELLCOTT NDB (MHW) 371 FND N39°17.24' W76°46.62' 154° 8.4 NM to fld. 381/11W.

NDB unusable:

140°-320° byd 12 NM blo 10,500'

ILS 109.7 I-BAL Rwy 10. Class IIIE.

ILS 111.95 I-UQC Rwy 15L. Class ID. LOC unusable byd 30° left of course.

ILS 111.7 I-FND Rwy 15R. Class IE.

ILS 109.7 I-OEH Rwy 28. Class IE.

ILS/DME 111.7 I-RUX Chan 54 Rwy 33L. Class IIE.

ILS/DME 111.95 I-BWI Chan 56(Y) Rwy 33R. Class ID. DME component status: DME OTS indef.

ESSEX SKYPARK (W48) 3 SE UTC-5(-4DT) N39°15.75' W76°25.93'

WASHINGTON
COPTER

14 B NOTAM FILE DCA

RWY 16-34: H2O81X30 (ASPH) MIRL

RWY 16: REIL. PAPI(P2L)—GA 4.5° TCH 19'. Trees.

RWY 34: REIL. PAPI(P2R)—GA 4.5° TCH 20'. Thld dspicd 192'. Trees.

SERVICE: LGT ACTVT REIL Rwy 16 and Rwy 34; MIRL Rwy 16-34—CTAF.

AIRPORT REMARKS: Unattended. No touch and go lds. Pla and hel pat NA. PPR for mil, emerg and med acct.

AIRPORT MANAGER: 443-996-1743

COMMUNICATIONS: CTAF/UNICOM 122.7

CLEARANCE DELIVERY PHONE: For CD ctc Potomac Apch at 866-429-5882.

• • • • •

WATERWAY 16W-34W: 3000X300 (WATER)