

PASCO

TRI-CITIES (PSC)(KPSC) 2 NW UTC-8(-7DT) N46°15.88' W119°07.14'

410 B Class I, ARFF Index B NOTAM FILE PSC

RWY 03L-21R: H7707X150 (ASPH-GRVD) S-150, D-200, 2S-175,

2D-400 PCN 47 F/B/X/T HIRL

RWY 03L: REIL. PAPI(P4L)—GA 3.0° TCH 49'. RVR-R Tree.

RWY 21R: MALSR. PAPI(P4L)—GA 3.0° TCH 54'. RVR-T Thld dsplcd 597'. Pole. Rgt tfc.

RWY 12-30: H7704X150 (ASPH-GRVD) S-150, D-200, 2S-175,

2D-400 PCN 53 F/C/X/T MIRL

RWY 12: REIL. VASI(V4L)—GA 3.0° TCH 56'.

RWY 30: ODALS. PAPI(P4L)—GA 3.0° TCH 54'. Thld dsplcd 200'. Tree.

RWY 03R-21L: H4423X75 (ASPH) S-52, D-85, 2S-108, 2D-108,

2D/2D2-150 PCN 13 F/B/X/T

RWY 03R: Rgt tfc.

RWY 21L: Tower.

RUNWAY DECLARED DISTANCE INFORMATION

RWY 03L:TORA-7707 TODA-7707 ASDA-7707 LDA-7707

RWY 03R:TORA-4423 TODA-4423 ASDA-4423 LDA-4423

RWY 12: TORA-7704 TODA-7704 ASDA-7504 LDA-7504

RWY 21L:TORA-4423 TODA-4423 ASDA-4423 LDA-4423

RWY 21R:TORA-7707 TODA-7707 ASDA-7707 LDA-7110

RWY 30: TORA-7704 TODA-7704 ASDA-7704 LDA-7504

SERVICE: S4 **FUEL** 100LL, JET A1+ **OX 2 LGT** When twr clsd HIRL Rwy 03L-21R and MIRL Rwy 12-30 preset on low intensity to increase intensity and **ACTIVATE** MALSR Rwy 21R and ODALS Rwy 30—CTAF.

AIRPORT REMARKS: Attended 1600-0400Z†. After hrs fuel call 509-547-6271 or 509-545-5524. Call out fee. Fuel 24 hour credit card svc avbl. Rwy 03R-21L sfc cracking. Waterfowl on and in vicinity of arpt spring and fall. PPR to unscheduled air carrier ops with more than 30 passenger seat call arpt manager 509-547-6352. Rwy 21L and Rwy 03R not avbl as movement area for air carrier acft with more than 9 passenger seats or greater for ldg and tkf. Rwy 03R-21L is avbl for air carrier acft for taxiing during dalgt and VFR conditions only.

AIRPORT MANAGER: 509-547-6352

WEATHER DATA SOURCES: ASOS (509) 547-7379 LAWRS SAWRS.

COMMUNICATIONS: CTAF 135.3 ATIS 125.65 **UNICOM** 122.95

JUMP-OFF-JOE RCO 122.4 (SEATTLE RADIO)

Ⓡ **CHINOOK APP/DEP CON** 128.75 (N & W) 133.15 (S & E) (1400-0600Z†)

Ⓡ **SEATTLE CENTER APP/DEP CON** 132.6 (0600-1400Z†)

TOWER 135.3 (1400-0600Z†) **GND CON** 121.8 **CLNC DEL** 120.0

AIRSPACE: CLASS D svc 1400-0600Z†; other times CLASS E.

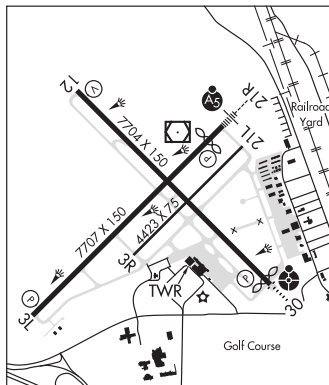
RADIO AIDS TO NAVIGATION: NOTAM FILE PSC.

PASCO (L) VORW/DME 109.8 PSC Chan 35 N46°16.22' W119°07.04' at fld. 406/15E.

DME unusable:

160°-170° byd 30 NM

ILS/DME 108.7 I-PSC Chan 24 Rwy 21R. Class IE. Unmonitored when ATCT closed.



SEATTLE
H-1C, L-13A
IAP, AD

PEARSON FLD (See VANCOUVER on page 226)

PELLY N47°06.94' W119°16.47' NOTAM FILE MWH.

NDB (MHW/LOM) 408 MW 324° 5.9 NM to Grant Co Intl. 1136/18E.

SEATTLE
L-13A

PENN COVE N48°14.68' W122°43.47' NOTAM FILE SEA.

(L) **VORW/DME** 117.2 CVV Chan 119 060° 2.1 NM to Aj Eisenberg. 200/19E.

SEATTLE
L-1E

DME portion unusable:

126°-160° byd 30 NM blo 2,200'

250°-260° byd 30 NM blo 3,400'

330°-360° byd 30 NM blo 2,200'

PIERCE CO - THUN FLD (See PUYALLUP on page 209)