

NEW SMYRNA BEACH

MASSEY RANCH AIRPARK (X50) 3 S UTC-5(-4) N28°58.74' W80°55.49'

JACKSONVILLE

11 NOTAM FILE PIE

L-24F

RWY 18-36: H4360X60 (ASPH) LIRL

IAP

RWY 18: Thld dspclcd 315'. Road.

RWY 36: Thld dspclcd 200'. Road.

SERVICE: S4 FUEL 100LL, JET A LGT SS-SR. Rwy 18-36 LIRLs are psnd 20 ft either side of rwy.

AIRPORT REMARKS: Attended Mon-Fri 1400-2200Z, Sat-Sun irreg. Self svc fuel. Acft maint call 386-426-6346. Glider, banner towing, aerobatics and parachuting act on and invof arpt.

AIRPORT MANAGER: 386-428-3818

COMMUNICATIONS: CTAF/UNICOM 122.7

Ⓡ DAYTONA APP/DEP CON 125.35

CLEARANCE DELIVERY PHONE: For CD or to cnl IFR ctc dab Apch at 386-226-3939.

RADIO AIDS TO NAVIGATION: NOTAM FILE OMN.

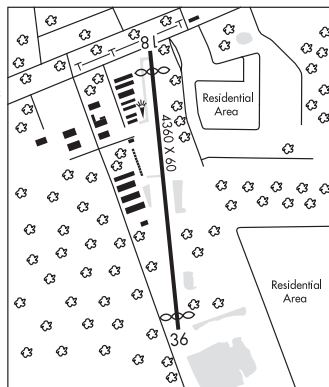
ORMOND BEACH (H) VORTAC 112.6 OMN Chan 73 N29°18.20' W81°06.76' 153° 21.8 NM to fld. 24/OE.

VOR unusable:

070°-100° byd 35NM blo 1,500'

240°-244° blo 6,000'

290°-300° byd 20 NM blo 2,500'



NEW SMYRNA BEACH MUNI (EVB)(KEVB) 3 NW UTC-5(-4DT) N29°03.34' W80°56.94'

JACKSONVILLE

11 B TPA—See Remarks NOTAM FILE EVB

H-8H, L-24F

RWY 07-25: H5000X75 (ASPH) S-55 PCN 25 F/A/Y/T MIRL

IAP, AD

RWY 07: PAPI(P4L)—GA 3.0° TCH 48'. Thld dspclcd 335'. Fence.

RWY 25: PAPI(P4L)—GA 3.0° TCH 46'. Thld dspclcd 300'. Fence.

RWY 11-29: H4319X75 (ASPH) S-55 PCN 29 F/A/Y/T MIRL

RWY 11: PAPI(P4L)—GA 3.5° TCH 39'. Trees.

RWY 29: PAPI(P4L)—GA 3.0° TCH 35'. Road.

RWY 02-20: H4000X100 (ASPH) S-55 PCN 5 F/B/Z/T

RWY 02: Thld dspclcd 785'. Road.

RWY 20: Trees.

SERVICE: S4 FUEL 100LL, JET A LGT ACTVT MIRL Rwy 11-29 and 07-25 after 0400Z—CTAF.

NOISE: Voluntary noise abatement in effect, ctc arpt mgr for details at 386-410-2680.

AIRPORT REMARKS: Attended 1200-0300Z. For attendant after 0300Z, call 386-410-2680. Birds on and invof arpt. Arpt CLOSED for ultralights, exc PPR 386-410-2680. TPA for lgt acft 788' AGL, heavy acft 1188' AGL. Rwys 02-20 and twy cracking with grass. Rwy 02-20 longl and transverse cracking thru. Rwy 02-20 markings faded. Unlgtd obstns road & fence 83 ft bfr AER 07, 250 ft right of cntrln. Unlgtd obstructions road & fence 200 ft bfr AER 25, 250 ft right of centerline.

AIRPORT MANAGER: (386) 410-2680

WEATHER DATA SOURCES: AWOS-3 124.625 (386) 409-4705.

COMMUNICATIONS: CTAF 119.675 ATIS 124.625 UNICOM 122.95

Ⓡ DAYTONA APP/DEP CON 125.35

TOWER 119.675 (1200-0300Z) **GND CON** 121.325

CLEARANCE DELIVERY PHONE: For CD or to cnl IFR when ATCT is clsd ctc dab Apch at 386-226-3939.

AIRSPACE: CLASS D svc 1200-0300Z; other times CLASS G.

RADIO AIDS TO NAVIGATION: NOTAM FILE OMN.

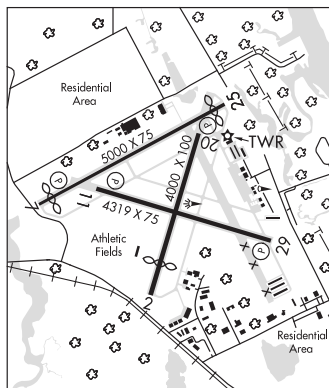
ORMOND BEACH (H) VORTAC 112.6 OMN Chan 73 N29°18.20' W81°06.76' 150° 17.1 NM to fld. 24/OE.

VOR unusable:

070°-100° byd 35NM blo 1,500'

240°-244° blo 6,000'

290°-300° byd 20 NM blo 2,500'



NORTH PALM BEACH CO GENERAL AVIATION (See WEST PALM BEACH on page 168)

NORTH PERRY (See HOLLYWOOD on page 107)