

PAONIA

NORTH FORK VALLEY (7V2) 3 SW UTC-7(-6DT) N38°49.88' W107°38.75'

DENVER
L-9E

5798 TPA—6598(800) NOTAM FILE DEN

RWY 05-23: H4500X60 (ASPH) S-21 HIRL

RWY 05: PAPI(P2L).

RWY 23: PAPI(P2L).

SERVICE: S4 FUEL 100LL LGT ACTIVATE HIRL Rwy 05-23, PAPI Rwy 05 and Rwy 23—CTAF.

AIRPORT REMARKS: Attended Mon-Fri 1500-0100Z†, Sat-Sun irregularly. 24 hr self serve fuel avbl. Rwy 05-23 has -50' to 75' terrain droppoff on both sides at various locations the entire length of rwy. Rwy 23 has -60' drop off at thld and within 30' of centerline at various locations.

AIRPORT MANAGER: 970-527-3345

COMMUNICATIONS: CTAF/UNICOM 122.7

CLEARANCE DELIVERY PHONE: For CD ctc Denver ARTCC at 303-651-4257.

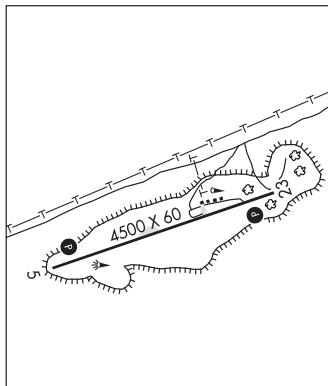
RADIO AIDS TO NAVIGATION: NOTAM FILE DEN.

BLUE MESA (H) VOR/DME 114.9 HBU Chan 96 N38°27.13' W107°02.38' 295° 36.4 NM to fld. 8740/14E.

DME portion unusable:

315°-325° byd 27 NM blo 17,500'

COMM/NAV/WEATHER REMARKS: Lcl wx avail 122.7—4 clicks.



PERRY STOKES (See TRINIDAD on page 299)

PETEY N38°41.66' W104°42.98' NOTAM FILE COS.

DENVER
L-10F

NDB (MHW/LOM) 407 CO 358° 6.7 NM to City Of Colorado Springs Muni. 5574/8E.

PLATTE VALLEY AIRPARK (See HUDSON on page 283)

PUEBLO MEML (PUB)(KPUB) 5 E UTC-7(-6DT) N38°17.40' W104°29.88'

DENVER
H-5A, L-10F
IAP, AD

4729 B Class I, ARFF Index A NOTAM FILE PUB

RWY 08R-26L: H10498X150 (ASPH-GRVD) S-75, D-170, 2D-250

HIRL

RWY 08R: MALSR. PAPI(P4L)—GA 3.0° TCH 63'. Rgt t/c.

RWY 26L: REIL. PAPI(P4L)—GA 3.0° TCH 62'. 0.4% up..

RWY 17-35: H8310X150 (ASPH-GRVD) S-93, D-110, 2S-140, 2D-170 MIRL

RWY 17: REIL. PAPI(P4L)—GA 3.0° TCH 54'. 1.0% down..

RWY 35: REIL. PAPI(P4L)—GA 3.0° TCH 48'. 0.9% up..

RWY 08L-26R: H4690X75 (ASPH-GRVD) S-20, 2S-175 MIRL

RWY 08L: REIL. PAPI(P4L)—GA 3.0° TCH 40'.

RWY 26R: REIL. PAPI(P4L)—GA 3.0° TCH 40'.

LAND AND HOLD—SHORT OPERATIONS

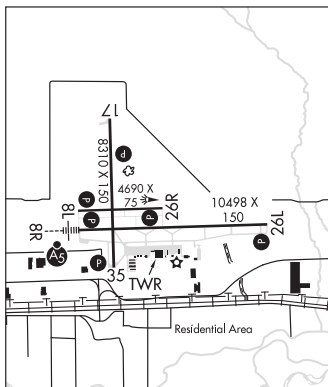
LDG RWY	HOLD—SHORT POINT	AVBL LDG DIST
RWY 17	08L-26R	4700
RWY 26L	17-35	8300

RUNWAY DECLARED DISTANCE INFORMATION

RWY	TORA	TODA	ASDA	LDA
08L	4690	10496	4690	4690
08R	10496	10496	10496	10496
17	8308	8308	8308	8308
26L	10496	10496	10496	10496
26R	4690	4690	4690	4690
35	8308	8308	8308	8308

SERVICE: S4 FUEL 100LL, JET A OX3 LGT When twr clsd ACTIVATE MALSR Rwy 08R; REIL Rwy 08L, Rwy 17, Rwy 26R, Rwy 26L, Rwy 35; PAPI Rwy 08R, Rwy 08L, Rwy 17, Rwy 26R, Rwy 26L, Rwy 35; HIRL Rwy 08R-26L; MIRL Rwy 17-35, Rwy 08L-26R—CTAF.

AIRPORT REMARKS: Attended 1200-0500Z†. Conditions not monitored 0500-1200Z†. For fuel after hrs call 719-948-3316 or use 100LL self-svc. Be alert, intensive USAF student training invof Colorado Springs and Pueblo Colorado. Rwy 08L-26R avbl to acft under 20,000 lbs during dalg and night hrs. Twy A between Twy A2 and A6 50' wide. High volume training DA-20 acft Mon-Fri SR-SS. Overhead pat during training. Extensive use of training area 12-28 DME north to southwest of aprt 500' AGL to 8500' MSL Mon-Fri SR-SS. See Special Notices—USAF 306 FTG Flight Training Areas, Vicinity of Colorado Springs and Pueblo Colorado.



CONTINUED ON NEXT PAGE

CONTINUED FROM PRECEDING PAGE

AIRPORT MANAGER: 719-553-2744
 WEATHER DATA SOURCES: ASOS (719) 948-2803
 COMMUNICATIONS: CTAF 119.1 ATIS 125.25 UNICOM 122.95
 RCO 122.2 (DENVER RADIO)
 (R) DENVER APP/DEP CON 120.1 (1300-0500Z±)
 (R) DENVER CENTER APP/DEP CON 128.375 (0500-1300Z±)
 TOWER 119.1 (1300-0500Z±) GND CON 121.9 CLNC DEL 120.9
 CLEARANCE DELIVERY PHONE: For CD ctc Pueblo Apch at 303-342-1916, when Apch clsd ctc Denver ARTCC at 303-651-4257.
 AIRSPACE: CLASS D svc 1300-0500Z±; other times CLASS E.
 RADIO AIDS TO NAVIGATION: NOTAM FILE PUB.
 (H) VORTACW 116.7 PUB Chan 114 N38°17.66' W104°25.77' 257° 3.2 NM to fld. 4756/8E.
 ILS 109.5 I-PUB Rwy 08R. Class IE. Unmonitored when ATCT closed.
 ILS 108.3 I-TFR Rwy 26L. Class IA. Unmonitored when ATCT closed.

RANGELY (4V0) 2 E UTC-7(-6DT) N40°05.64' W108°45.78'
 5278 B NOTAM FILE DEN

CHEYENNE
 H-3E, L-9D, 11E
 IAP

RWY 07-25: H6409X75 (ASPH) S-28, D-28 PCN 28 F/C/XT MIRL
 RWY 07: REIL. PAPI(P2L)—GA 3.0° TCH 40'. Road. Rgt tfc.
 RWY 25: REIL. Road.

SERVICE: FUEL 100LL LGT ACTIVATE REIL Rwy 07 and Rwy 25,
 MIRL Rwy 07-25—CTAF. PAPI Rwy 07 opr 24 hrs.

AIRPORT REMARKS: Attended 1500-0000Z±. Self-svc fuel avbl with credit card. For svc call 970-675-2316. Minor emerg svcs upon req. Monitor 123.5 for trng ops at arpt. Three flashing haz bcns outline obst hills east. Rwy 07-25 shoulders soft when wet. Deer periodically on and invof arpt. Rwy 07 has +8' fence line 520' from thld obst, +66' trees 2500' from thld 600' left of cntrln. Rwy 25 has +10' fence line 615' from thld obst. Twy marked with blue reflectors. Cold temperature airport. Altitude correction required at or below -18C.

AIRPORT MANAGER: 970-675-2316

WEATHER DATA SOURCES: AWOS-3PT 119.025 (970) 675-2339.

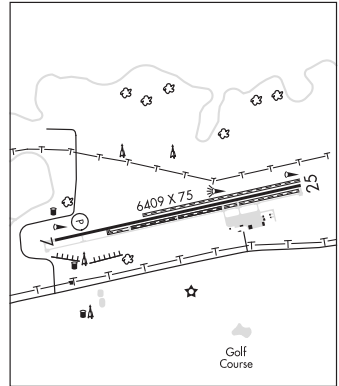
COMMUNICATIONS: CTAF/UNICOM 122.8

RCO 122.65 (DENVER RADIO)

CLEARANCE DELIVERY PHONE: For CD if una to ctc on FSS freq, ctc Denver ARTCC at 303-651-4257.

RADIO AIDS TO NAVIGATION: NOTAM FILE DEN.

MEEKER (H) VORW/DME 115.2 EKR Chan 99 N40°04.05' W107°55.50' 258° 38.6 NM to fld. 7630/15E.



RANGELY

KENNEY RESERVOIR SPB (13R) 5 NE UTC-7(-6DT) N40°06.92' W108°42.49'
 5329 NOTAM FILE DEN

CHEYENNE

WATERWAY 01W-19W: 6800X300 (WATER)

SEAPLANE REMARKS: CTN: Unatndd, use at own risk. No wake bouys may be present near shore. Smdd by +750 ft trm and cliffs. Adz prior to arr—970-675-5055, must have performed and dcmtd aquatic nuisance species insp. No svcs avbl. Apch sfc data not mntd.

AIRPORT MANAGER: 970-675-5055

COMMUNICATIONS: CTAF 122.9

COMM/NAV/WEATHER REMARKS: Rcmd Rangely Arpt CTAF 122.8 to avoid tfc conflict.

RED TABLE N39°26.36' W106°53.68' NOTAM FILE DEN.

DENVER
 H-3E, L-9E

(H) VORW/DME 113.0 DBL Chan 77 163° 13.1 NM to Aspen-Pitkin Co/Sardy Fld. 11800/12E.