

SALINA—GUNNISON (44U) 5 NE UTC-7(-6DT) N39°01.75' W111°50.30'

LAS VEGAS

5159 B NOTAM FILE CDC

L-9C

RWY 02-20: H3855X60 (ASPH) S-6 MIRL 0.7% up N

SERVICE: LGT ACTIVATE MIRL Rwy 02-20—CTAF.

AIRPORT REMARKS: Unattended.

AIRPORT MANAGER: (435) 979-9234

COMMUNICATIONS: CTAF 122.9

CLEARANCE DELIVERY PHONE: For CD ctc Salt Lake ARTCC at 801-320-2568.

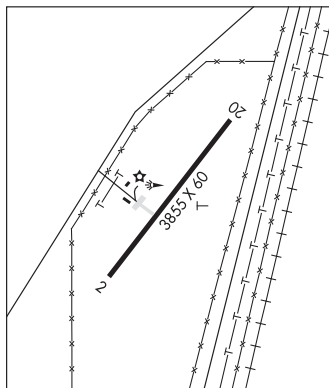
RADIO AIDS TO NAVIGATION: NOTAM FILE CDC.

DELTA (H) VORTACW 116.1 DTA Chan 108 N39°18.13'

W112°30.33' 102° 35.2 NM to fld. 4642/16E.

VOR unusable:

045°-090° byd 25 NM blo 10,700'



SALT LAKE CITY

SALT LAKE CITY INTL (SLC)(KSLC) P (ANG) 3 W UTC-7(-6DT)

N40°47.30' W111°58.67'

SALT LAKE CITY

4231 B LRA Class I, ARFF Index E NOTAM FILE SLC

H-3D, L-9C, 11D

RWY 16L-34R: H12002X150 (ASPH-GRVD) S-60, D-200, 2S-175, 2D-350, 2D/2D2-850 HIRL CL

IAP, AD

RWY 16L: ALSF2. TDZL. PAPI(P4L)—GA 3.0° TCH 70'. RVR-TMR

RWY 34R: ALSF2. TDZL. PAPI(P4L)—GA 3.0° TCH 73'. RVR-TMR

RWY 16R-34L: H12000X150 (CONC-GRVD) S-60, D-200, 2S-175, 2D-350, 2D/2D2-850 HIRL CL

RWY 16R: ALSF2. TDZL. PAPI(P4L)—GA 3.0° TCH 73'. RVR-TMR

RWY 34L: ALSF2. TDZL. PAPI(P4L)—GA 3.0° TCH 73'. RVR-TMR

RWY 17-35: H9596X150 (ASPH-GRVD) S-60, D-200, 2S-175, 2D-350, 2D/2D2-850 HIRL CL

RWY 17: MALSR. TDZL. PAPI(P4R)—GA 3.0° TCH 73'. RVR-TR

RWY 35: MALSR. TDZL. PAPI(P4L)—GA 3.0° TCH 74'. RVR-TR

Thld dsplcd 324'. Antenna.

RWY 14-32: H4893X150 (ASPH-GRVD) S-60, D-200, 2D-350, 2D/2D2-850 HIRL

RWY 14: PAPI(P4L)—GA 3.0° TCH 40'.

RWY 32: PAPI(P4L)—GA 3.0° TCH 41'.

RUNWAY DECLARED DISTANCE INFORMATION

RWY 14: TORA-4892 TODA-4892 ASDA-4892 LDA-4892

RWY 16L: TORA-12002 TODA-12002 ASDA-12002 LDA-12002

RWY 16R: TORA-12000 TODA-12000 ASDA-12000 LDA-12000

RWY 17: TORA-9597 TODA-9597 ASDA-9597 LDA-9597

RWY 32: TORA-4892 TODA-4892 ASDA-4892 LDA-4892

RWY 34L: TORA-12000 TODA-12000 ASDA-12000 LDA-12000

RWY 34R: TORA-12002 TODA-12002 ASDA-12002 LDA-12002

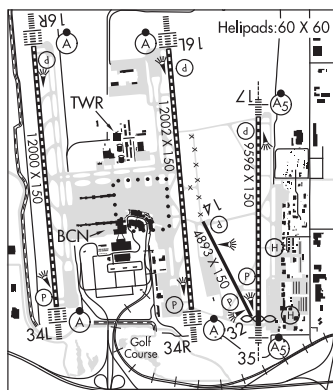
RWY 35: TORA-9597 TODA-9597 ASDA-9597 LDA-9273

SERVICE: S4 FUEL 100LL, JET A1+ OX 1, 2, 3, 4 MILITARY— JASU (MD-3M) (MA-1A) (M32A-60A) FUEL A++ FLUID

LPOX OIL O-148(Mil)

AIRPORT REMARKS: Attended continuously. Flocks of birds on and in/ov arpt. Rwy 14-32 CLOSED blw 1200' RVR. Due to ttc volume, lcl dep and arr ops are discouraged and delays can be expd btn 1500-1730Z† and 0130-0300Z†. See current NOTAMs for dates and additional info. Twy Y rstd to wingspans less than 171' between Twy H3 and Twy H4. Spots 20 and 21 to be renamed 2 West on 15 Sep 2020. Spots 22 and 23 to be renamed 1 West on 15 Sep 2020. Special FVR is not recommended at the arpt, if req, exp delays. Use caution for extv paragliding ops in/ov point of the mountain.

ASDE-X in use. Operate transponders with altitude reporting mode and ADS-B (if equipped) enabled on all airport surfaces. Use minimum thrust in construction areas. Ctc ground on 123.775 before taxing out of north cargo. Flight Notification Service (ADCUS) avbl.



CONTINUED ON NEXT PAGE

CONTINUED FROM PRECEDING PAGE

AIRPORT MANAGER: (801) 575-2408

WEATHER DATA SOURCES: ASOS 125.625 (801) 359-4103. TDWR.

COMMUNICATIONS: D-ATIS 125.625 124.75 801-325-9749 UNICOM 122.95

RCO 122.4 (CEDAR CITY RADIO)

Ⓡ SALT LAKE CITY APP CON 120.9 (South of 41° latitude blo 8000') 121.1 (North of 41° latitude blo 8000') 128.6 (110°-160° TCH abv 8,000') 124.9 (300°-340° abv 8000') 128.1 (160°-250° abv 8000') 135.5 (340°-110° abv 8000') 125.7 126.25

Ⓡ SALT LAKE CITY DEP CON 120.9 (South of 41° latitude blo 8000') 121.1 (North of 41° latitude blo 8000') 128.6 (110°-160° TCH abv 8,000') 126.25 (250°-300° abv 8000') 128.1 (160°-250° abv 8000') 135.5 (340°-110° abv 8000') 125.7

TOWER 118.3 (Rwy 17-35 and Rwy 14-32) 119.05 (Rwy 16L-34R) 132.65 (Rwy 16R-34L)

GND CON 121.9 (Rwy 17-35 and Rwy 14-32) 123.775 (Rwy 16R-34L and Rwy 16L-34R) CLNC DEL 127.3

PRE-TAXI CLNC 127.3 PRE-DEP CLNC 127.3

CPDLC (LOGON KUSA)

PDC

AIRSPACE: CLASS B See VFR Terminal Area Chart.

VOR TEST FACILITY (VOT) 111.0

RADIO AIDS TO NAVIGATION: NOTAM FILE SLC.

WASATCH (H) VORTACW 116.8 TCH Chan 115 N40°51.02' W111°58.91' 161° 3.7 NM to fld. 4216/16E.

VOR portion unusable:

- 015°-030° blo 26,000'
- 030°-050° byd 20 NM
- 050°-085° byd 20 NM blo 18,000'
- 085°-125° byd 30 NM blo 15,000'
- 360°-015° byd 20 NM blo 17,000'

DME unusable:

- 030°-080° byd 17 NM blo 17,000'
- 030°-080° byd 25 NM
- 080°-140° byd 17 NM blo 15,000'
- 080°-140° byd 25 NM

TACAN AZIMUTH unusable:

030°-140°

TACAN AZIMUTH & DME unusable:

- 185°-220° byd 25 NM blo 16,000'
- 260°-290° byd 25 NM blo 11,000'
- 350°-360° byd 30 NM blo 16,000'
- 360°-030° byd 17 NM blo 16,000'
- 360°-030° byd 30 NM

ILS/DME 109.5 I-MOY Chan 32 Rwy 16L. DME also serves ILS Rwy 34R.

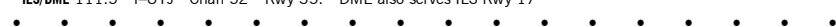
ILS/DME 111.9 I-UAT Chan 56 Rwy 16R. Class IIIE. DME also serves ILS Rwy 34L.

ILS/DME 111.5 I-BNT Chan 52 Rwy 17. Class IIE. DME also serves ILS Rwy 35.

ILS/DME 111.9 I-UUH Chan 56 Rwy 34L. Class IIIE. DME also serves ILS Rwy 16R.

ILS/DME 109.5 I-SLC Chan 32 Rwy 34R. Class IIIE. DME also serves ILS Rwy 16L.

ILS/DME 111.5 I-UTJ Chan 52 Rwy 35. DME also serves ILS Rwy 17



HELIPAD HB: H60X60 (ASPH)

HELIPAD HF: H60X60 (ASPH)

HELIPORT REMARKS: Helipads B and F lctd on general aviation aprons. Lgtd pole 51' AGL 383' ESE of Helipad B.

