

TOPINABEE

PBEAAYE (Y30) 3 NE UTC-5(-4DT) N45°31.87' W84°33.42'

LAKE HURON

690 NOTAM FILE LAN

RWY 01-19: 2470X90 (TURF)

RWY 01: Thld dsplcd 450'. Trees.

RWY 19: Thld dsplcd 800'. Trees.

AIRPORT REMARKS: Unattended. Deer and birds invof arpt. Winter ops skis only. No snow removal. Trees in primary sfc; all quadrants. Rwy 01-19 sfc rough, uneven trrn. Rwy 01-19 dsplcd thlds marked with cones. +60' windsoc located at north end.

AIRPORT MANAGER: 231-290-6114

COMMUNICATIONS: CTAF 122.9

CLEARANCE DELIVERY PHONE: For CD ctc Minneapolis ARTCC at 651-463-5588.

TORCHPORT (See EASTPORT on page 176)

TRAVERSE CITY

CHERRY CAPITAL (TVC)(KTVC) P (CG) 2 S UTC-5(-4DT) N44°44.49' W85°34.91'

624 B ARFF Index—See Remarks NOTAM FILE TVC MON Airport

GREEN BAY

H-2L, L-31B

IAP, AD

RWY 10-28: H7016X150 (ASPH-GRVD) S-120, D-230, 2S-165,

2D-440 PCN 56 F/A/X/T HIRL

RWY 10: MALSR. PAPI(P4L)—GA 3.0° TCH 55'. Tree.

RWY 28: MALSR. PAPI(P4L)—GA 3.0° TCH 45'. Tower.

RWY 18-36: H5378X150 (ASPH-GRVD) S-70, D-110, 2S-140,

2D-190 PCN 31 F/A/X/T MIRL

RWY 18: VASI(V4L)—GA 3.0° TCH 47'. Thld dsplcd 272'. Tree.

RWY 36: REIL. VASI(V4L)—GA 3.5° TCH 53'. Fence.

LAND AND HOLD—SHORT OPERATIONS

LDG RWY	HOLD—SHORT POINT	AVBL LDG DIST
RWY 18	10-28	2850
RWY 28	18-36	5950

RUNWAY DECLARED DISTANCE INFORMATION

RWY 10: TORA-7016 TODA-7016 ASDA-7016 LDA-7016
RWY 18: TORA-5378 TODA-5378 ASDA-5108 LDA-4838
RWY 28: TORA-7016 TODA-7016 ASDA-7016 LDA-7016
RWY 36: TORA-5378 TODA-5378 ASDA-5108 LDA-5108

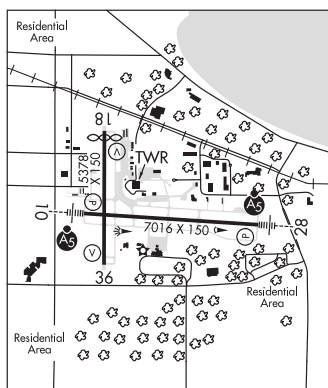
SERVICE: S4 FUEL 100LL, JET A+ LGT When ATCT clsd actvt MALSR

Rwy 10 & 28; REIL Rwy 36; HIRL Rwy 10-28; MIRL Rwy 18-36—CTAF. PAPI Rwy 10 & 28; VASI Rwy 18 & 36 opr consly.

AIRPORT REMARKS: Attended 0900-0600Z. During hrs when arpt is unattended call arpt ops 231-313-0928. For FBO hrs of ops call 231-929-1126. Birds on and invof arpt. 100LL self svc fuel avbl with credit card during FBO hrs only. Arpt sfc cond unmon btn 0600-0900Z. Parasailing ops 1.5 NM northeast of arpt from Memorial Day to Labor Day 600' AGL from SR-SS daily. Class I, ARFF Index B. 48 hr PPR for unsked acf ops with over 30 psgr seats—call amgr. Twy C-2/C-3 east of Twy C not avbl to ACR acft. No general avn acft on the air carrier ramp. Snow removal ops in progress winter months. Snow Command will be monitoring CTAF during non-twr hours. Acft ldg/departing TVC should announce their intentions on CTAF when twr clsd. Flt crews should read back all advisory information provided by Snow Command. All acft charged overnight ramp parking fee exc mil. All acft charged landing fee exc pvt owned, single engine acft.

AIRPORT MANAGER: 231-947-2250

WEATHER DATA SOURCES: ASOS 119.175 (231) 486-2920.



CONTINUED ON NEXT PAGE

CONTINUED FROM PRECEDING PAGE

COMMUNICATIONS: CTAF 124.2 ATIS 119.175 UNICOM 122.95

TRAVERSE CITY RCO 122.2 (LANSING RADIO)

Ⓡ MINNEAPOLIS CENTER APP/DEP CON 132.9

TRAVERSE CITY TOWER 124.2 (1200-0200Z EST; 1100-0200Z EDT) GND CON 121.8

CLEARANCE DELIVERY PHONE: For CD if una to ctc on FSS freq, ctc Minneapolis ARTCC at 651-463-5588.

AIRSPACE: CLASS D svc 1200-0200Z± EST, 1100-0200Z± EDT; other times CLASS E.

RADIO AIDS TO NAVIGATION: NOTAM FILE TVC.

TRAVERSE CITY (H) (H) VORW/DME 114.6 TVC Chan 93 N44°40.07' W85°33.00' 345° 4.6 NM to fld. 912/2W.

DME unusable:

050°-060° byd 9 NM

061°-120°

156°-158° byd 38 NM blo 5,000'

VOR unusable:

024°-034° byd 10 NM blo 5,000'

050°-060° byd 9 NM

061°-120°

210°-228° byd 10 NM

GWENN NDB (MHW/LOM) 365 TV N44°44.07' W85°25.74' 279° 6.5 NM to fld. 895/5W. NDB unmonitored when twr clsd.

ILS 110.7 I-TVC Rwy 28. Class IE. LOM GWENN NDB. ILS and LOM unmonitored when twr clsd. LOC unusable byd 26° left and right of course.

COMM/NAV/WEATHER REMARKS: Emerg frequency 121.5 not avbl at twr.

TRIBE N45°03.68' W87°41.78' NOTAM FILE MNM.

GREEN BAY

NDB (LOMW) 239 TN 035° 4.6 NM to Menominee Rgnl. 610/3W.

TRIPLE H (See PARCHMENT on page 223)

TRIPP CREEK (See ST JOHNS on page 234)