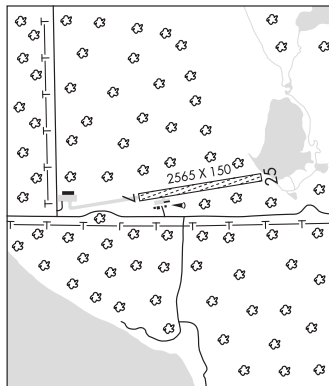


BOWSTRING (9Y0) 2 NW UTC-6(-5DT) N47°33.49' W93°52.20'

TWIN CITIES

1372 NOTAM FILE PNM

RWY 07-25: 2565X150 (TURF) 0.4% up W**RWY 07:** Trees.**RWY 25:** Brush.**AIRPORT REMARKS:** Unattended. Arpt plowed winter months. Deer on and invof rwy. Rwy 07-25 mkd with yellow cones.**AIRPORT MANAGER:** (218) 244-6328**COMMUNICATIONS:** CTAF 122.9**CLEARANCE DELIVERY PHONE:** For CD ctc Minneapolis ARTCC at 651-463-5588.**BRainerd Lakes RGNL** (BRD)(KBRD) 3 NE UTC-6(-5DT) N46°24.25' W94°08.03'

TWIN CITIES

1232 B Class I, ARFF Index A NOTAM FILE BRD

H-2I, L-14H
IAP, AD**RWY 16-34:** H7100X150 (CONC-GRVD) S-75, D-125, 2D-220

PCN 49 R/B/W/U HIRL

RWY 16: REIL. PAPI(P4L)—GA 3.0° TCH 45'.**RWY 34:** MALSR. PAPI(P4R)—GA 3.0° TCH 46'.**RWY 05-23:** H6512X150 (CONC-GRVD) S-75, D-125, 2D-220

PCN 49 R/B/W/U HIRL

RWY 05: REIL. VASI(V4L)—GA 3.0° TCH 45'. Tree.**RWY 23:** MALSR. PAPI(P4L)—GA 3.0° TCH 50'. Trees.**SERVICE:** S4 FUEL 100LL, JET A OX 1, 3 LGT HIRL Rwy 05-23 and Rwy 16-34 preset on low ints, to increase ints and ACTIVATE REIL Rwy 05 and Rwy 16, and MALSR Rwy 23 and Rwy 34—CTAF. Rwy 23 PAPI unusable byd 9° right of course.**AIRPORT REMARKS:** Attended Jul-Oct 1100-0500Z†, Nov-Jun 1300-0500Z†. For attendance other hours, see current phone listing in pilots lounge, 218-829-3398. Deer and gulls on and invof arpt. PPR for unscheduled air carrier ops with more than 30 passenger seats call arpt manager 218-825-2166 between 1400-2300Z†. Air carrier ops involving acft with more than 30 passengers are not authorized in excess of 15 minutes before or after scheduled arrival/departure times without prior coordination with arpt manager and confirmation that ARFF is avbl prior to ldg or tkf.**AIRPORT MANAGER:** 218-825-2166**WEATHER DATA SOURCES:** ASOS 126.775 (218) 828-3314.**COMMUNICATIONS:** CTAF/UNICOM 122.7

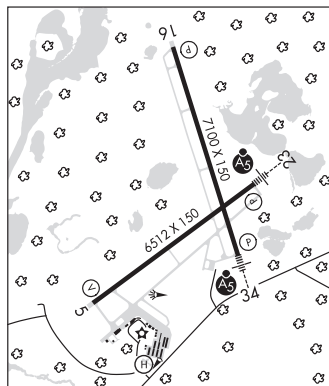
RCO 122.2 (PRINCETON RADIO)

Ⓜ MINNEAPOLIS CENTER APP/DEP CON 118.05

CLEARANCE DELIVERY PHONE: For CD if una to ctc on FSS freq, ctc Minneapolis ARTCC at 651-463-5588.**AIRSPACE:** CLASS E svc 1100-0500Z† Mon-Sat, 1200-0500Z† Sun; other times CLASS G.**RADIO AIDS TO NAVIGATION:** NOTAM FILE PKD.**PARK RAPIDS (L) DME** 110.6 PKD Chan 43 N46°53.89' W95°04.26' 127° 48.8 NM to fld. 1472/0E.**LAREW NDB (MHW/LOM)** 251 BR N46°27.40' W94°01.35' 233° 5.6 NM to fld. 1260/3E. NOTAM FILE BRD.

ILS 109.9 I-BRD Rwy 23. Class IE. LOM LAREW NDB. COMLO unmonitored. Unmonitored.

ILS/DME 109.7 I-LER Chan 34 Rwy 34. Class IB. Unmonitored.

**HELIPAD H1:** H60X60 (CONC-GRVD) PERIMETER LGTS**HELIPORT REMARKS:** Helipad H1 has perimeter lgts. Rwy H1 perimeter lgts operate SS-SR.