

RICHMOND/ASHLAND

HANOVER CO MUNI (OFF)(KOPF) 8 N UTC-5(-4DT) N37°42.54' W77°26.20'

207 B TPA—1007(800) NOTAM FILE OFF

RWY 16-34: H5402X100 (ASPH-PFC) S-40 MIRL

RWY 16: REIL. PAPI(P4L)—GA 3.0° TCH 40'. Tree.

RWY 34: REIL. Trees.

SERVICE: S4 **FUEL** 100LL, JET A **OX** 1, 2, 3, 4 **LGT** ACTVT MIRL Rwy 16-34; REIL Rwys 16 and 34—CTAF.

NOISE: Noise sensitive area south of arpt.

AIRPORT REMARKS: Attended 1200-0000Z±. Deer and birds on and in/ov arpt. For acft svcs call 804-798-6500. Rwy 34 preferred rwy with wind less than 5 kts.

AIRPORT MANAGER: 804-365-6208

WEATHER DATA SOURCES: ASOS 119.025 (804) 752-2902.

COMMUNICATIONS: CTAF/UNICOM 122.7

Ⓡ **POTOMAC APP/DEP CON** 126.75 118.2

CLNC DEL 125.4

CLEARANCE DELIVERY PHONE: For CD ctc Potomac Apmh at 866-640-4124.

AIRSPACE: CLASS E.

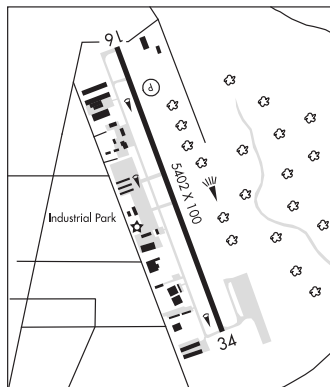
RADIO AIDS TO NAVIGATION: NOTAM FILE RIC.

RICHMOND (H) (H) VORTACW 114.1 RIC Chan 88 N37°30.14' W77°19.22' 345° 13.6 NM to fld. 158/9W.

TAC AZM unusable;

060°-075° byd 10 NM blo 1,700'

LOC/DME 109.7 I-OP Chan 34 Rwy 16. LOC unmonitored when arpt unatndd.



WASHINGTON

H-10H, 12I, L-34E, 36H
IAP

RICHMOND N37°30.14' W77°19.22' NOTAM FILE RIC.

(H) (H) VORTACW 114.1 RIC Chan 88 at Richmond Intl. 158/9W.

TAC AZM unusable;

060°-075° byd 10 NM blo 1,700'

RCO 122.4 (LEESBURG RADIO)

WASHINGTON

H-10H, 12H, L-34E, 36H
IAP, AD

ROANOKE-BLACKSBURG RGNL/WOODRUM FLD (ROA)(KROA) 3 NW UTC-5(-4DT)

N37°19.53' W79°58.53'

1175 B TPA—1975(800) Class I, ARFF Index B NOTAM FILE ROA

RWY 06-24: H6800X150 (ASPH-GRVD) S-150, D-200, 2S-175, 2D-310 PCN 76 F/B/X/T HIRL

RWY 06: MALSR. REIL. VASI(V4L)—GA 3.0° TCH 58'.

RWY 24: REIL. PAPI(P4L)—GA 3.0° TCH 58'. Thld dspcd 790'.

RWY 16-34: H5810X150 (ASPH-GRVD) S-150, D-200, 2S-175, 2D-310 PCN 54 F/A/X/T HIRL 0.4% up NW

RWY 34: MALSR. PAPI(P4L)—GA 3.0° TCH 56'. Tower.

RUNWAY DECLARED DISTANCE INFORMATION

RWY 06: TORA-6800 TODA-6800 ASDA-6800 LDA-6800

RWY 16: TORA-5810 TODA-5810 ASDA-5810 LDA-5810

RWY 24: TORA-6800 TODA-6800 ASDA-6800 LDA-6010

RWY 34: TORA-5810 TODA-5810 ASDA-5810 LDA-5810

ARRESTING GEAR/SYSTEM

RWY 34: EMAS

SERVICE: S4 **FUEL** 100LL, JET A **OX** 1, 2 **LGT** Rwy 24 PAPI unusbl byd 5 degs R of cntrln due to trn.

AIRPORT REMARKS: Attended continuously. Birds in/ov arpt. For opr concerns—ATCT 540-563-1307. Tkof and ldg per assessment; rwy cond assessment matrix not mntd 2300 to 0600 daily. Dep Rwy 34 and arr Rwy 16 NA at night or during IFR cond due to trn. Twy T clsd to acft with wingspan greater than 118 ft. Cold temperature restricted airport. Altitude correction required at or below -13C. Tsnt pilots ctc FBO UNICOM for prkg and escort.

AIRPORT MANAGER: 540-362-1999

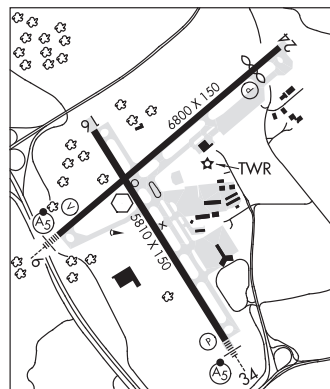
WEATHER DATA SOURCES: ASOS (540) 265-0680 LLWAS.

COMMUNICATIONS: ATIS 132.375 UNICOM 122.95

ROANOKE RCO 122.6 (LEESBURG RADIO)

Ⓡ **APP/DEP CON** 118.15 Rwy 16/34 (360°-150°) Rwy 06 (235°-074°) 126.9 Rwy 16/34 (151°-359°) Rwy 06 (075°-234°)

TOWER 118.3 **GND CON** 121.9 **CLNC DEL** 119.7



CINCINNATI

H-10H, 12H, L-26I
IAP, AD

CONTINUED ON NEXT PAGE

CONTINUED FROM PRECEDING PAGE

AIRSPACE: CLASS C svc ctc APP CON svc continuous.

RADIO AIDS TO NAVIGATION: NOTAM FILE ROA.

(L) VOR/DME 109.4 ROA Chan 31 N37°20.61' W80°04.22' 107° 4.7 NM to fld. 3072/4W.

VOR unusable:

045°-063° byd 25 NM blo 7,000'

WOODRUM (T) VORW 114.9 ODR N37°19.45' W79°58.74' at fld. 1164/8W.

VOR unusable:

035°-050° byd 20 NM blo 7,000'

035°-110° byd 10 NM blo 4,200'

035°-110° byd 15 NM blo 6,500'

290°-360° byd 15 NM

VINTON NDB (MHW) 277 VIT N37°12.24' W79°52.90' 336° 8.6 NM to fld. 1543/8W.

NDB unusable:

Byd 11 NM

LDA/DME 111.1 I-SZK Chan 48 Rwy 06. Glideslope AIMED part to LOC course. DME unusable byd 30° left of course. LOC unusable wi 0.6 NM. ILS unusable blw 1,475'.

ILS 109.7 I-ROA Rwy 34. Class IB. Unmonitored when ATCT clsd.

SALUDA

HUMMEL FLD (W75) 6 E UTC-5(-4DT) N37°36.14' W76°26.80'

30 B NOTAM FILE DCA

RWY 01-19: H2167X45 (ASPH) S-12.5 MIRL 0.3% up S

RWY 01: APAP(PNIL). Thld dspcld 125'. Tree.

RWY 19: APAP(PNIR). Tree.

SERVICE: S4 FUEL 100LL LGT ACTIVATE MIRL Rwy 01-19—CTAF.

Rwy 01 has NSTD thld lgts, has second set of green lgts. Rwy 01 VGSI OTS indef. Rwy 19 VGSI OTS indef.

AIRPORT REMARKS: Attended 1300-2100Z†. Unattended Thanksgiving, Christmas day and New Year's day. Topping is city closest to the arpt. Arpt is 2 miles ENE. Drainage swales full length of rwy on both sides. Use of exit in front of Hummel Aviation advised. Birds and deer on and invof of arpt during winter. Departing Rwy 01-19 climb to 500 ft before any turn out; arriving acct use wide pattern to avoid populated areas E and W of arpt.

AIRPORT MANAGER: 804-758-4330

WEATHER DATA SOURCES: AWOS-3 118.45 (804) 758-8592.

COMMUNICATIONS: CTAF/UNICOM 123.0

® NORFOLK APP/DEP CON 126.05

CLEARANCE DELIVERY PHONE: For CD ctc Norfolk Apch at 757-464-0757.

RADIO AIDS TO NAVIGATION: NOTAM FILE DCA.

HARCUM (L) (L) VORTACW 108.8 HCM Chan 25 N37°26.92'

W76°42.68' 061° 15.6 NM to fld. 8/7W.

VOR unusable:

056°-095° blo 2,000'

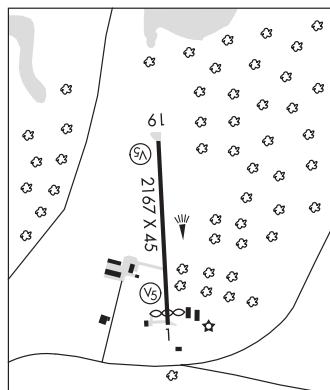
174

275°-300° blo 2,000'

WASHINGTON

L-34E, 36I

IAP



SHANNON (See FREDERICKSBURG on page 352)

SHENANDOAH VALLEY RGNL (See STAUNTON/WAYNESBORO/HARRISONBURG on page 380)

SMITH MOUNTAIN LAKE (See MONETA on page 363)