

CASPER

**CASPER/NATRONA CO INTL** (CPR)(KPCR) 7 NW UTC-7(-6DT) N42°54.35' W106°27.82'

CHEYENNE

5344 B LRA Class I, ARFF Index B NOTAM FILE CPR

H-3F, 5A, L-11E, 12F

**RWY 03-21:** H10165X150 (ASPH-GRVD) S-130, D-170, 2D-270

IAP, AD

PCN 46 F/B/X/T HIRL

**RWY 03:** MALSR. PAPI(P4R)—GA 3.0° TCH 50'. RVR-T

**RWY 21:** REIL. VASI(V4L)—GA 3.0° TCH 56'. RVR-R

**RWY 08-26:** H8679X150 (ASPH-GRVD) S-85, D-140, 2D-260

PCN 44 F/B/X/T HIRL

**RWY 08:** MALSR. VASI(V4R)—GA 3.0° TCH 103'. RVR-T

**RWY 26:** REIL. PAPI(P4R)—GA 3.0° TCH 50'. RVR-R 0.4% up.

**RUNWAY DECLARED DISTANCE INFORMATION**

**RWY 03:** TORA-10165 TODA-10165 ASDA-10165 LDA-10165

**RWY 08:** TORA-8679 TODA-8679 ASDA-8679 LDA-8679

**RWY 21:** TORA-10165 TODA-10165 ASDA-10165 LDA-10165

**RWY 26:** TORA-8679 TODA-8679 ASDA-8679 LDA-8679

**SERVICE:** S4 FUEL 100LL, JET A OX 1, 2, 3, 4 LGT When twr clsd  
ACTIVATE HIRL Rwy 03-21 and Rwy 08-26, MALSR Rwy 03 and Rwy 08 and twy lgts—CTAF.

**AIRPORT REMARKS:** Attended continuously. Emerg pwr avbl Rwy 08-26 and Rwy 03-21. Rwy 08-26 and Rwy 03-21 have lgtd distance remaining signs. Rwys clsd to FSL, TGL, and PLA aircraft more than 250,000 lbs except for 4 hrs PPR 307-995-3950. 225' crane 1 NM northeast of arpt. Flight Notification Service (ADCUS) available.

**AIRPORT MANAGER:** 307-472-6688

**WEATHER DATA SOURCES:** ASOS (307) 472-8960 LAWRS 1200-0400Z‡.

**COMMUNICATIONS:** CTAF 118.3 ATIS 126.15 UNICOM 122.95

RCO 122.6 (CASPER RADIO)

Ⓡ APP/DEP CON 120.65 (1200-0400Z‡)

Ⓡ DENVER CENTER APP/DEP CON 135.6 (0400-1200Z‡)

TOWER 118.3 (1200-0400Z‡) GND CON 121.9 CLNC DEL 121.9

**CLEARANCE DELIVERY PHONE:** For CD ctc Casper Apch at 307-472-8940, when Apch clsd ctc Denver ARTCC at 303-651-4257.

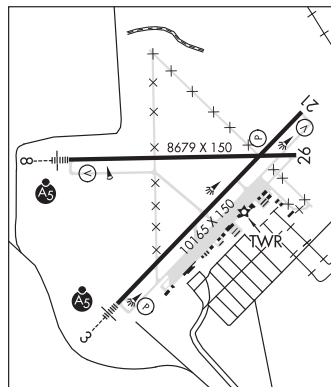
**AIRSPACE:** CLASS D svc 1200-0400Z‡; other times CLASS E.

**RADIO AIDS TO NAVIGATION:** NOTAM FILE CPR.

**MUDDY MOUNTAIN (H) (H) VOR/DME** 116.2 DDY Chan 109 N43°05.45' W106°16.62' 205° 13.8 NM to fld.  
5863/12E.

ILS 111.3 I-SYD Rwy 03. Class IB. Syd LOC is unmonitored from 0400-1200Z‡ daily.

**COMM/NAV/WEATHER REMARKS:** Emerg freq 121.5 not avbl at twr.



**HARFORD FLD** (HAD)(KHAD) 5 N UTC-7(-6DT) N42°55.46' W106°18.57'

CHEYENNE

5370 NOTAM FILE CPR

**RWY 07-25:** 3810X30 (DIRT)

**RWY 07:** Bldg.

**AIRPORT REMARKS:** Unattended. Antelope on and invof arpt. Line of sight problem btn Rwy 07 and Rwy 25, Rwy 25 slopes uphill first 510'. Abandoned arpt 1.5 miles west.

**AIRPORT MANAGER:** 307-262-0606

**COMMUNICATIONS:** CTAF 122.9

**CLEARANCE DELIVERY PHONE:** For CD ctc Casper Apch at 307-472-8940, when Apch clsd ctc Denver ARTCC at 303-651-4257.

**CASPER** N43°07.28' W106°20.73'

CHEYENNE

RCO 122.6 (CASPER RADIO)

L-11E, 12F

**CENTRAL WYOMING RGNL** (See RIVERTON on page 256)

**CHEROKEE** N41°45.34' W107°34.92' NOTAM FILE CPR.

CHEYENNE

(H) (H) VOR/DME 115.0 CKW Chan 97 065° 17.4 NM to Rawlins Muni/Harvey Fld. 7050/15E.

H-3E, L-11E

RCO 122.4 (CASPER RADIO)