

MONTROSE RGNL (MTJ)(KMTJ) 1 NW UTC-7(-6DT) N38°30.59' W107°53.66'

DENVER
H-3E, L-9E
IAP, AD

5759 B Class I, ARFF Index B NOTAM FILE MTJ
RWY 17-35: H1000X150 (ASPH-GRVD) S-75, D-190, 2D-265

PCN 61 F/C/X/T HIRL
RWY 17: MALSR. PAPI(P4L)—GA 3.0° TCH 55'. 0.5% up.
RWY 35: REIL. PAPI(P4L)—GA 3.0° TCH 41'. 0.3% down.
RWY 13-31: H7510X100 (ASPH-GRVD) S-65, D-90, 2D-150
PCN 13 F/D/X/T HIRL 0.8% up SE
RWY 13: REIL. VASI(V4L)—GA 3.0° TCH 43'. Tree.
RWY 31: REIL. VASI(V4L)—GA 3.0° TCH 43'.

RUNWAY DECLARED DISTANCE INFORMATION

RWY 13: TORA-7510 TODA-7510 ASDA-7510 LDA-7510
RWY 17: TORA-10000 TODA-10000 ASDA-10000 LDA-10000
RWY 31: TORA-7510 TODA-7510 ASDA-7510 LDA-7510
RWY 35: TORA-10000 TODA-10000 ASDA-10000 LDA-10000

SERVICE: S4 FUEL 100LL, JET A+ OX1, 3 LGT ACTIVATE HIRL Rwy 17-35 and Rwy 13-31, MALSR Rwy 17, and REIL Rwy 13, Rwy 31 and Rwy 35-CTAF.

AIRPORT REMARKS: Attended Apr 1-Dec 15 1230-0400Z†, Dec 16-Mar 31 1200-0400Z†. Migratory birds and wildlife on and in/ov arpt. Unscheduled air carrier ops with more than 30 pax seats rqr 24 hr PPR call arpt mgr 970-249-3433. Air carrier acft reqd to access terminal ramp via Twy C, outbd t/c Twy D. Ramp connector adjacent to T hangar row clsd indef. Twy E, E6 clsd exc acft with wingspan less than 78'. Twy B ltd to single wheel acft max 80,000 lbs, double wheel acft max 105,000 lbs, and double tandem acft max 170,000 lbs. Preferred t/kf Rwy 31 and Rwy 35 and ldg Rwy 13 and Rwy 17. Rwy 17-35 preferred rwy for acft with apch speed greater than 121 kts.

AIRPORT MANAGER: 970-249-3433

WEATHER DATA SOURCES: ASOS 135.225 (970) 249-1534.

COMMUNICATIONS: CTAF/UNICOM 122.8

RCO 122.65 (DENVER RADIO)

® DENVER CENTER APP/DEP CON 127.1

CLEARANCE DELIVERY PHONE: For CD if una to ctc on FSS freq, ctc Denver ARTCC at 303-651-4257.

AIRSPACE: CLASS E svc 1300-0400Z†; other times CLASS G.

RADIO AIDS TO NAVIGATION: NOTAM FILE MTJ.

(H) (H) VOR/DME 117.1 MTJ Chan 118 N38°30.39' W107°53.96' at fld. 5713/12E. vDME unmonitored.

DME unusable:

011°-090° byd 26NM blo 15,000'

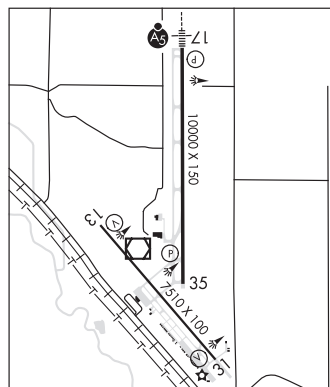
190°-250° byd 25 NM blo 15,000'

VOR unusable:

060°-090° byd 26NM blo 16,000'

190°-250° byd 25 NM blo 15,000'

ILS 111.3 I-MTJ Rwy 17. Unmonitored.



MONUMENT HILL MNH N39°13.13' W104°38.43' W7060

DENVER
L-10F

AWOS-3 134.375 (303) 648-3479

NORTH FORK VALLEY (See PAONIA on page 299)

NORTHERN COLORADO RGNL (See FORT COLLINS/LOVELAND on page 284)