

WOLF LAKE (4AK6) PVT 6 W UTC-9(-8DT) N61°38.36' W149°17.04'**ANCHORAGE**
L-1A, 3D, 4G

540 B NOTAM FILE Not insp.

RWY 08-26: H3800X40 (ASPH)

RWY 08: Trees. Rgt tfc.

RWY 18-36: 2600X100 (GRVL)

RWY 18: Rgt tfc.

AIRPORT REMARKS: Unattended. Snow removal during winter.**AIRPORT MANAGER:** 907-746-1880**COMMUNICATIONS:** CTAF 122.8**COMM/NAV/WEATHER REMARKS:** For a toll free call to Kenai FSS dial -866-864-1737.**WATERWAY E-W:** 2800X100 (WATER)

WATERWAY W: Rgt tfc.

SEAPLANE REMARKS: Recommend seaplane acft ops to and from Wolf Lake remain north of lake. Rwy E-W dep turn right to avoid rwy tfc.**PAXSON** (PXK)(PAXK) 0 S UTC-9(-8DT) N63°01.47' W145°30.03'**ANCHORAGE**

2653 NOTAM FILE ENA

RWY 13-31: 1900X12 (TURF-GRVL)

RWY 13: Trees.

RWY 31: Trees.

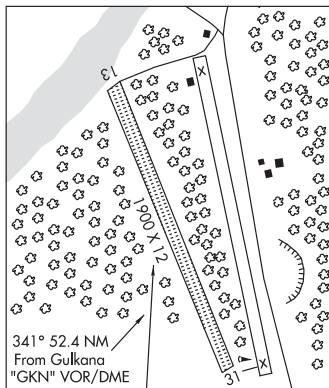
AIRPORT REMARKS: Unattended. Rwy also used as road. No winter maintenance. Ski equipped aircraft only. Rwy sfc is not maintained. Width between willows 60'.**AIRPORT MANAGER:** 907-822-3217**COMMUNICATIONS:** CTAF 122.9

PAXSON RCO 122.3 (KENAI FSS)

SUAIS 125.3 126.3 (1-800-758-8723).

RADIO AIDS TO NAVIGATION: NOTAM FILE GKN.**GULKANA (H) (H) VOR/DME** 115.6 GKN Chan 103 N62°09.23'

W145°26.84' 341° 52.4 NM to fld. 1549/17E.

COMM/NAV/WEATHER REMARKS: For a toll free call to Kenai FSS dial 1-866-864-1737.**PEDRO BAY** (4KØ) 1 W UTC-9(-8DT) N59°47.82' W154°07.80'**KODIAK**

84 B NOTAM FILE ILI

L-3D

RWY 09-27: 3002X60 (GRVL-DIRT) MIRL 0.6% up W

RWY 09: Brush. Rgt tfc.

RWY 27: Brush.

SERVICE: LGT ACTIVATE MIRL Rwy 09-27, rotating bcn, and windsock light—CTAF.**AIRPORT REMARKS:** Unattended. High mountainous terrain N of arpt. Strong winds create severe turbulence and possible wind shear at arpt. Rwy soft during break-up and freeze-up, also after rainy periods. Rwy 09-27 marked with reflective cones and thld panels, some panels damaged.**AIRPORT MANAGER:** 907-571-1261**COMMUNICATIONS:** CTAF 122.9**RADIO AIDS TO NAVIGATION:** NOTAM FILE ILI.**ILIAMNA NDB/DME (HW)** 411 ILI Chan 91 N59°44.88'

W154°54.58' 069° 23.8 NM to fld. 168/14E.

DME unusable:

010°-020° byd 20 NM blo 12,000'

020°-050° byd 25 NM blo 13,000'

270°-300° byd 25 NM blo 7,000'

300°-320° byd 25 NM blo 8,000'

