

INIGOK (4AK1) PVT 96 W UTC-9(-8DT) N70°00.23' W153°04.65'**POINT BARROW**

191 B NOTAM FILE FDC Not insp.

H-1A, L-4I

RWY 02-20: 5000X150 (GRVL) 0.6% up S

AIRPORT REMARKS: Unattended. Closed to the public. Bureau of Land Management (BLM) installation. All acct oprs shall obtain a permit prior to intended ldg. Ctc the BLM Arctic fld Office, 1150 University Avenue, Fairbanks, AK 99709 (http://www.blm.gov/ak/st/en/fo/fdo/arctic_field_office.html) or call 907-474-2200 to apply for a permit 45 days prior to intended ldg. Failure to obtain and have onboard an apvd permit will result in trespass violations and possibly criminal and civ actions. Rwy not maintained, recommend visual inspection prior to ldg. Rwy 02 multiple soft spots last 2000'. 25' antenna 650' NW of Rwy 02.

AIRPORT MANAGER: 907-474-2200**COMMUNICATIONS:** CTAF/UNICOM 122.8**COMM/NAV/WEATHER REMARKS:** For a local call to Barrow FSS dial 852-2511. For a toll free call to Fairbanks FSS dial 1-866-248-6516.**DEERING** (DEE)(PADE) 2 SW UTC-9(-8DT) N66°04.15' W162°46.02'**NOME**

30 B NOTAM FILE DEE

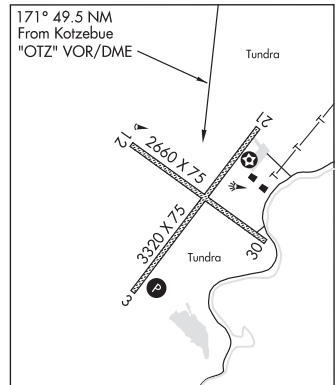
L-4H

RWY 03-21: 3320X75 (GRVL) MIRL

IAP

RWY 03: REIL. PAPI(P4R)—GA 3.0° TCH 25'.**RWY 12-30:** 2660X75 (GRVL) MIRL 0.4% up NW**SERVICE:** LGT ACTIVATE MIRL Rwy 03-21 and Rwy 12-30; REIL Rwy 03 and PAPI Rwy 03—CTAF. ACTIVATE rotating bcn—CTAF.

AIRPORT REMARKS: Unattended. Migratory birds as well as musk oxen and other large animals on and invof of rws. Rwy cond not monitored, recommend visual inspection prior to ldg. Cold temperature restricted airport. Altitude correction required at or below -40C. Rwy 03-21 plowed in winter. Windsock missing at Rwy 12. Rwy 03-21 NSTD markings, marked with lgts and plastic markers. Rwy 12-30 NSTD markings, marked with lgts and plastic markers.

AIRPORT MANAGER: 907-442-3147**WEATHER DATA SOURCES:** ASOS 135.5 (907) 363-2102. (WX CAM)**COMMUNICATIONS:** CTAF 122.9**DEERING RCO** 122.25 (KOTZEBUE RADIO)**ANCHORAGE CENTER APP/DEP CON** 119.2 263.0**RADIO AIDS TO NAVIGATION:** NOTAM FILE OTZ.**KOTZEBUE (H) (H) VORW/DME** 115.7 OTZ Chan 104 N66°53.14' W162°32.40' 171° 49.5 NM to fld. 121/15E.**COMM/NAV/WEATHER REMARKS:** For a LC to Kotzebue FSS dial 907-442-3310. For a toll free call to Kotzebue FSS dial 1-800-478-7460. For a toll free call to Fairbanks FSS dial 1-866-248-6516.**DELTA DAVES** (See DELTA JUNCTION on page 89)**DELTA JUNCTION****ALL WEST** (AK77) PVT 11 E UTC-9(-8DT) N63°56.49' W145°25.33'**ANCHORAGE**

1275 NOTAM FILE Not insp.

H-1B, L-1A, 3B, 3E

RWY 09-27: 5500X75 (TURF-GRVL)**AIRPORT REMARKS:** Unattended.**AIRPORT MANAGER:** 907-895-9800**COMM/NAV/WEATHER REMARKS:** For a toll free call to Fairbanks FSS dial 1-866-248-6516.**DELTA DAVES** (AA22) PVT 7 NW UTC-9(-8DT) N64°07.97' W145°48.27'**FAIRBANKS**

1050 NOTAM FILE Not insp.

RWY 15-33: 2350X60 (TURF)**RWY 15:** Trees.**RWY 33:** Rgt tfc.**AIRPORT REMARKS:** Unattended.**AIRPORT MANAGER:** 907-895-4887**COMM/NAV/WEATHER REMARKS:** For a toll free call to Fairbanks FSS dial 1-866-248-6516.