

TOLEDO

EUGENE F KRANZ TOLEDO EXPRESS (TOL)(KTOL) P (ANG) 10 SW UTC-5(-4DT) N41°35.21' W83°48.47'

DETROIT
H-10G, L-28J
IAP, AD

684 B LRA ARFF Index—See Remarks NOTAM FILE TOL

RWY 07-25: H10600X150 (ASPH-GRVD) S-100, D-174, 2S-175, 2D-300, 2D/2D2-550 PCN 67 F/B/W/T HIRL CL

RWY 07: ALSF2. TDZL. RVR-TR Trees.

RWY 25: MALSR. PAPI(P4L)—GA 3.0° TCH 69'. RVR-TR Trees. 0.3% up.

RWY 16-34: H5599X150 (ASPH-GRVD) S-100, D-174, 2S-175, 2D-300 PCN 52 F/B/W/T MIRL

RWY 16: REIL. PAPI(P4L)—GA 3.0° TCH 48'. Trees.

RWY 34: REIL. PAPI(P4L)—GA 3.0° TCH 50'.

RUNWAY DECLARED DISTANCE INFORMATION

RWY 07: TORA-10599 TODA-10599 ASDA-10599 LDA-10599

RWY 16: TORA-5599 TODA-5599 ASDA-5599 LDA-5599

RWY 25: TORA-10599 TODA-10599 ASDA-10599 LDA-10599

RWY 34: TORA-5599 TODA-5599 ASDA-5599 LDA-5599

ARRESTING GEAR/SYSTEM

RWY 07 BAK-14 BAK-12(B) (1500 FT).

BAK-14 BAK-12(B) (1050 FT). **RWY 25**

SERVICE: S4 FUEL 100LL, JET A, A++ OX 3 LGT SS-SR. Rwy 25

PAPI unusbld byd 8 degs right of cntrln. **MILITARY—FUEL:** A++(MIL)

AIRPORT REMARKS: Attended continuously. Birds on and invof arpt. Fuel and svc avbl 1300-0500Z†. Class I, ARFF Index B. 48 hr PPR for unsked acr ops gtr than 10 pax seats — call amgr. Twy N3 & ramp btn Twy B9 & B13 not vsb fm tower. Cust: Sat-Sun req must be made bfr 2200Z† Fri — call 419-732-4446.

MILITARY REMARKS: ANG Afld OPS duty hr 1145-2230Z† Mon-Thu, ocnl wkend, exc hol. PPR— offl bus, acft with wingspans gtr than 75 ft can exp prkg on Twy D or the south cargo ramp, ctc airfield ops DSN 580-4084/4036, C800-495-4250 extn 868-4084/868-4036. 180th Comd Post H24 DSN 580-4035. All inbnd tsnt acft ctc Command Post. Twy D int Twy D1, hvy acft use mnm pwr to rdc FOD on ANG ramp; for qns ctc Command Post or Airfield Ops on 338.15. Bird haz wildlife act drg migration; BASH Phase II in eff Mar-May & Aug-Oct. Airfield mgmt does not issue/store conseq; for conseq storage ctc Command Post DSN 580-4035.

AIRPORT MANAGER: 567-703-8629

WEATHER DATA SOURCES: ASOS (419) 865-6924 WSP.

COMMUNICATIONS: ATIS 118.75 UNICOM 122.95

Ⓡ **APP/DEP CON** 126.1 (360°-179°) 134.35 (180°-359°) 123.975

TOWER 118.1 **GND CON** 121.9 **CLNC DEL** 121.75

AIRSPACE: CLASS C svc ctc **APP CON**.

RADIO AIDS TO NAVIGATION: NOTAM FILE TOL.

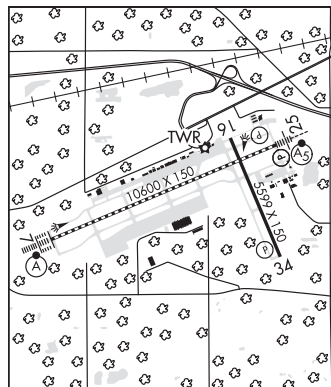
TOPHR NDB (LOMW) 219 TO N41°33.21' W83°55.27' 074° 5.5 NM to fld. 676/5W.

ILS 109.7 I-TOL Rwy 07. Class IE. LOM TOPHR NDB. Unmonitored when ATCT clsd. LOM unmonitored.

ILS/DME 108.7 I-BQE Chan 24 Rwy 25. Class IE. Unmonitored when ATCT clsd.

ASR

COMM/NAV/WEATHER REMARKS: ATIS reception intmt 270-320 degs, byd 35 NM.



SEAGATE HELISTOP HELIPIPORT (GT2) 0 N UTC-5(-4DT) N41°39.25' W83°31.88'

DETROIT

650 NOTAM FILE CLE

HELIPAD H1: H50X50 (CONC) PERIMETER LGTS

HELIPAD H1: NSTD.

SERVICE: LGT ACTIVATE perimeter lgts—CTAF.

HELIPAD REMARKS: Unattended. Door to pad is locked, call manager for code before ldg 419-865-2351. Helipad H1 NSTD 1-box (2 VASIS) OTS indef. Helipad H1 not marked with "H."

AIRPORT MANAGER: (419) 865-2351

COMMUNICATIONS: CTAF/UNICOM 123.05

CLEARANCE DELIVERY PHONE: For CD ctc Toledo Apmh at 419-865-1495