

**GREEN BAY/AUSTIN STRAUBEL INTL** (GRB)(KGRB) 7 SW UTC-6(-5DT) N44°29.08' W88°07.78' **GREEN BAY**

695 B LRA Class I, ARFF Index C NOTAM FILE GRB MON Airport **H-2K, L-31A**  
**RWY 18-36:** H8700X150 (CONC-GRVD) S-95, D-165, 2S-175, IAP, AD  
 2D-275 PCN 57 R/D/W/T HIRL

**RWY 18:** REIL. PAPI(P4R)—GA 3.0° TCH 54'. RVR-R Thld dsplcd 499'. Road. Rgt tfc.

**RWY 36:** MALSR. PAPI(P4L)—GA 3.0° TCH 50'. RVR-T

**RWY 06-24:** H7700X150 (CONC-GRVD) S-90, D-160, 2S-175, 2D-260 PCN 58 R/D/W/T HIRL

**RWY 06:** MALSR. PAPI(P4L)—GA 3.0° TCH 40'. RVR-T

**RWY 24:** PAPI(P4L)—GA 3.0° TCH 50'. RVR-R

**LAND AND HOLD—SHORT OPERATIONS**

LDG RWY	HOLD—SHORT POINT	AVBL LDG DIST
<b>RWY 18</b>	06-24	2692
<b>RWY 24</b>	18-36	6050
<b>RWY 36</b>	06-24	4932

**RUNWAY DECLARED DISTANCE INFORMATION**

<b>RWY 06:</b> TORA-7699 TODA-7699 ASDA-7699 LDA-7699
<b>RWY 18:</b> TORA-8700 TODA-8700 ASDA-8700 LDA-8201
<b>RWY 24:</b> TORA-7699 TODA-7699 ASDA-7699 LDA-7699
<b>RWY 36:</b> TORA-8201 TODA-8201 ASDA-8201 LDA-8201

**SERVICE:** S4 **FUEL** 100LL, JET A **OX** 1, 3 **LGT** ACTIVATE MALSR Rwy

06 and Rwy 36; REIL Rwy 18; HIRL Rwy 06-24 and Rwy 18-36—CTAF. PAPI Rwy 06, Rwy 18, Rwy 24 and Rwy 36 opr continuously. When twr is clsd the preferred rwy preset on low or med ints; increase ints—CTAF.

**NOISE:** Request voluntary compliance in avoiding noise sensitive areas N & E of arpt between midnight and 6 A.M.

**AIRPORT REMARKS:** Attended 1100-0400Z†. Birds on & invof arpt. Twy D wbdnd no turn onto Twy J. Twy J southwestbound no turn onto northbound Twy M. Twy M southwestbound no turn onto Twy J. Twy J southwestbound no turn onto eastbound Twy D. Twys C not avbl for acf with more than 30 pax seats. Flight Notification Service (ADCUS) available.

**AIRPORT MANAGER:** 920-498-4800

**WEATHER DATA SOURCES:** ASOS (920) 494-7140 LLWAS.

**COMMUNICATIONS:** CTAF 118.7 ATIS 124.1

**GREEN BAY RCO** 122.2 (GREEN BAY RADIO)

Ⓡ **GREEN BAY APP CON** 119.4 (1130-0530Z†)

Ⓡ **GREEN BAY DEP CON** 126.55 (1130-0530Z†)

Ⓡ **MINNEAPOLIS CENTER APP/DEP CON** 125.55 (0530-1130Z†)

**GREEN BAY TOWER** 118.7 (1130-0530Z†) **GND CON** 121.9 **CLNC DEL** 121.75

**CLEARANCE DELIVERY PHONE:** For CD if una to ctc on FSS freq, ctc Minneapolis ARTCC at 651-463-5588.

**AIRSPACE:** CLASS C svc ctc **APP CON** svc 1130-0530Z†; other times CLASS E.

**RADIO AIDS TO NAVIGATION:** NOTAM FILE GRB.

(H) (H) **VORTACW** 115.5 GRB Chan 102 N44°33.31' W88°11.69' 146° 5.1 NM to fld. 767/1E.

VOR unusable:

270°-300° blo 7,000'

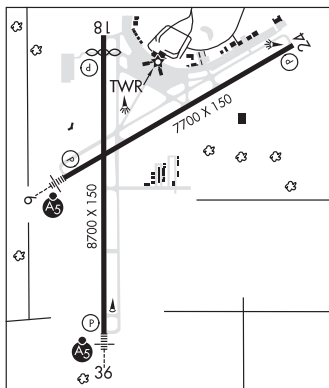
**DEPRE NDB (MHW/LOM)** 332 SG N44°23.91' W88°07.97' 003° 5.2 NM to fld. 638/2W.

**FAMIS NDB (LOMW)** 356 GR N44°26.43' W88°14.37' 063° 5.4 NM to fld. 711/2W.

**ILS/DME** 109.5 I-GRB Chan 32 Rwy 06. Class IE. LOM FAMIS NDB. Unmonitored when twr clsd. Localizer backcourse DME unusable byd 15° right of course.

**ILS** 109.9 I-SGZ Rwy 36. Class IE. LOM DEPRE NDB. Unmonitored when twr clsd.

**ASR** (1130-1730Z†)



**GUTZMER'S TWIN OAKS** (See WHITEWATER on page 387)