

CONTINUED FROM PRECEDING PAGE

RADIO AIDS TO NAVIGATION: NOTAM FILE JVL.

JANESVILLE (L) (L) VOR/DME 114.3 JVL Chan 90 N42°33.48' W89°06.32' 034° 4.7 NM to fld. 932/3E.

VOR unusable:

001°-089°

155°-175° byd 15 NM

282°-000° byd 30 NM blo 3,000'

ILS 109.1 I-JVL Rwy 04. Class IE. Unmonitored when ATCT clsd.

ILS/DME 111.35 I-REE Chan 50(Y) Rwy 32. Class IE. Unmonitored when ATCT clsd.

JOHN F KENNEDY MEML (See ASHLAND on page 328)

JUNEAU

DODGE CO (UNU)(KUNU) 2 N UTC-6(-5DT) N43°25.59' W88°42.23'

CHICAGO

934 B NOTAM FILE UNU

H-5E, L-28H

RWY 08-26: H5070X100 (ASPH) MIRL 0.9% up NE

IAP

RWY 08: REIL. PAPI(P4L)—GA 3.0° TCH 26'. Trees.

RWY 26: MALS. PAPI(P4L)—GA 3.0° TCH 35'.

RWY 02-20: H4028X75 (ASPH) S-12.5 MIRL

RWY 02: REIL. PAPI(P2L)—GA 3.0° TCH 26'.

RWY 20: REIL. PAPI(P2L)—GA 3.0° TCH 25'.

SERVICE: S4 FUEL 100LL, JET A QX 2, 4 LGT MIRL Rwy 08-26 preset on low intst; to incr intst and actvt MALS Rwy 26; REIL Rwy 02, 08, & 20; PAPI Rwy 02, 08, 20, & 26; MIRL Rwy 02-20; MIRL Rwy 08-26—CTAF.

AIRPORT REMARKS: Attended 1300-0200Z†. Birds on and invof arpt. Irregular ultralight activity on and invof arpt. Mowing ops Mon-Fri with flashing lgts after dark.

AIRPORT MANAGER: 920-386-2402

WEATHER DATA SOURCES: AWOS-3 120.825 (920) 386-5682.

COMMUNICATIONS: CTAF/UNICOM 122.7

Ⓜ MADISON APP/DEP CON 119.15 (1200-0500Z†)

Ⓜ CHICAGO CENTER APP/DEP CON 133.3 (Hours Madison Apch Ctl clsd)

CLEARANCE DELIVERY PHONE: For CD ctc Chicago ARTCC at 630-906-8921.

RADIO AIDS TO NAVIGATION: NOTAM FILE MKE.

BADGER (H) (H) VOR/DME 116.4 BAE Chan 111 N43°07.01' W88°17.06' 313° 26.1 NM to fld. 1070/2E.

JUNEAU NDB (MHW) 344 UNU N43°25.74' W88°42.13' at fld. 913/1W. NOTAM FILE UNU.

LOC/DME 109.55 I-JNE Chan 32(Y) Rwy 26. LOC/DME unmonitored when FBO clsd.

JUNEAU N43°25.74' W88°42.13' NOTAM FILE UNU.

CHICAGO

NDB (MHW) 344 UNU at Dodge Co. 913/1W.

L-28H

KENOSHA RGNL (ENW)(KENW) 4 W UTC-6(-5DT) N42°35.76' W87°55.64'

CHICAGO

743 B LRA NOTAM FILE ENW

H-5E, L-28H, A

RWY 07L-25R: H6600X100 (CONC-GRVD) S-62, D-73, 2S-85, 2D-135 HIRL 0.5% up W

IAP, AD

RWY 07L: MALS. PAPI(P4L)—GA 3.0° TCH 55'.

RWY 25R: REIL. PAPI(P4L)—GA 3.0° TCH 45'. Rgt tfc.

RWY 15-33: H4440X100 (CONC-GRVD) S-62, D-73, 2S-86, 2D-135 HIRL

RWY 15: VASI(V4L)—GA 4.0° TCH 50'. Trees.

RWY 33: VASI(V4L)—GA 3.0° TCH 24'.

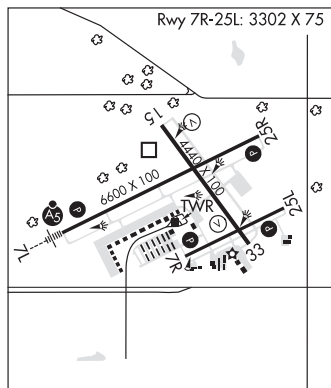
RWY 07R-25L: H3302X75 (ASPH-CONC) S-40, D-48 MIRL 0.7% up W

RWY 07R: PAPI(P4L)—GA 3.0° TCH 26'. Bldg. Rgt tfc.

RWY 25L: PAPI(P4L)—GA 3.0° TCH 24'. Trees.

SERVICE: S4 FUEL 100LL, JET A QX 1, 2 LGT When twr clsd HIRL Rwy 07L-25R preset on low intst; to incr intst and ACTIVATE MALS Rwy 07L; REIL Rwy 25R; PAPI Rwy 07L, Rwy 07R, Rwy 25L and Rwy 25R; HIRL Rwy 07L-25R; HIRL Rwy 15-33; MIRL Rwy 07R-25L—CTAF. VASI Rwy 15 and Rwy 33 opr consly. Rwy end 25L: PAPI unusbl byd 7 degs right of cntrl.

AIRPORT REMARKS: Attended 1300-0300Z†. Birds on and invof arpt. Rwy 07R-25L is CLOSED to jet acct and acct weighing more than 12,500 lbs when Rwy 07L-25R is open. Helicopter dep and arr ops will be authorized by twr from movement areas only. Non-movement area depts, arrs and practice, are prohibited.



CONTINUED ON NEXT PAGE

CONTINUED FROM PRECEDING PAGE

AIRPORT MANAGER: 262-653-4161

WEATHER DATA SOURCES: ASOS (262) 652-7730

COMMUNICATIONS: CTAF 118.6 ATIS 127.175 UNICOM 122.95

RCO 123.6R 109.2T (GREEN BAY RADIO)

® MILWAUKEE APP/DEP CON 135.875

TOWER 118.6 (1300-0300Z±) GND CON 121.875

CLNC DEL 121.875 (118.6 when twr clsd)

AIRSPACE: CLASS D svc 1300-0300Z±; other times CLASS E.

NOTAM AIDS TO NAVIGATION: NOTAM FILE IKK.

NORTHBROOK (VH) (DH) VORW/DME 113.0 OBK Chan 77 N42°13.28' W87°57.10' 005° 22.5 NM to fld. 708/2W.

DME unusable:

215°-330° byd 35 NM blo 3,000'

VOR unusable:

265°-272° byd 40 NM

273°-283° byd 40 NM blo 18,000'

284°-288° byd 40 NM

(T) DME 109.2 ENW Chan 29 N42°35.94' W87°55.90' at fld. 734/OE. NOTAM FILE ENW.

ILS 109.35 I-ENW Rwy 07L. Class IB. Unmonitored when ATCT clsd.

KINGS LAND O' LAKES (See LAND O' LAKES on page 350)

KOOKY N44°12.96' W88°23.94' NOTAM FILE ATW.

GREEN BAY

NDB (LOMW) 407 AQ 298° 5.8 NM to Appleton Intl. 752/2W. NDB unmonitored.

L-28H

L O SIMENSTAD MUNI (See OSCEOLA on page 365)

LA CROSSE RGNL (LSE)(KLSE) 4 NW UTC-6(-5DT) N43°52.76' W91°15.40'

CHICAGO

655 B Class I, ARFF Index B NOTAM FILE LSE

H-2J, L-28G

RWY 18-36: H8742X150 (CONC-GRVD) S-125, D-190, 2S-175,

2D-430, 2D/2D2-850 PCN 62 R/B/W/T HIRL

RWY 18: MALSR. PAPI(P4L)—GA 3.0° TCH 55'. Tree.

RWY 36: REIL. VASI(V4L)—GA 3.0° TCH 28'. Thld dsplcd 1131'.

Tree.

RWY 13-31: H6050X150 (ASPH-GRVD) S-125, D-190, 2S-175,

2D-430 PCN 73 R/B/W/T MIRL

RWY 13: REIL. VASI(V4L)—GA 3.0° TCH 33'. Trees.

RWY 31: REIL. VASI(V4L)—GA 3.85° TCH 44'. Thld dsplcd 739'.

Trees.

RWY 04-22: H5199X150 (ASPH) S-65, D-110, 2S-139, 2D-190

PCN 47 F/C/W/T HIRL

RWY 04: PAPI(P4L)—GA 4.0° TCH 29'. Pole.

RWY 22: PAPI(P4L)—GA 4.0° TCH 28'. Trees.

RUNWAY DECLARED DISTANCE INFORMATION

RWY 04: TORA-5199 TODA-5199 ASDA-5199 LDA-5199

RWY 13: TORA-5310 TODA-5310 ASDA-5310 LDA-5310

RWY 18: TORA-8742 TODA-8742 ASDA-8536 LDA-8536

RWY 22: TORA-5199 TODA-5199 ASDA-5199 LDA-5199

RWY 31: TORA-6050 TODA-6050 ASDA-6050 LDA-5310

RWY 36: TORA-8742 TODA-8742 ASDA-8557 LDA-7426

SERVICE: S4 FUEL 100LL, JET A LGT When ATCT clsd MIRL Rwy 13-31 preset low intst; to incr intst & actvt MALSR Rwy

18; REIL Rwy 13, 31, 36; MIRL Rwy 13-31; HIRL Rwy 18-36, Rwy 04-22—CTAF. PAPI Rwy 04, 18, & 22; VASI Rwy

13, 31, & 36 opr consly. Rwy 31 VASI unusbl byd 9 degs right of cntrln.

AIRPORT REMARKS: Attended 1200-0300Z±. Deer, waterfowl and other birds on and invof arpt. Heavy concentrations of

waterfowl spring and fall. For attendant other hrs call 608-783-8359. Cold temperature airport. Altitude correction

required at or below -22C. Twr 1390' AGL 6 NM southwest. Numerous twrs up to 836' AGL 4 NM southeast. Holding

position for the west side of Rwy 36 apch end is set back on Twy C, see HS-1 on arpt diagram. Rwy incursion risk. Pilots

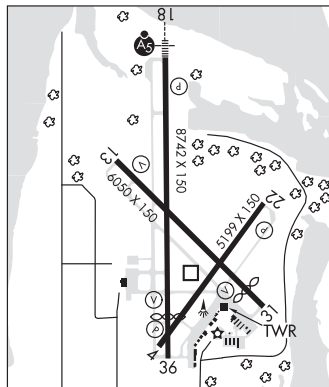
are reminded to review arpt hot spot info before taxiing for dep and before landing. See TPP arpt diagram and chart

supplement sxn on hot spots for additional info. Wrong rwy arrival risk, Rwy 4 and Rwy 36 apch ends are closely aligned.

See TPP arpt diagram.

AIRPORT MANAGER: 608-789-7456

WEATHER DATA SOURCES: ASOS 124.95 (608) 781-9067.



CONTINUED ON NEXT PAGE