

**CHICAGO/WEST CHICAGO**

**DUPAGE** (DPA)(KDPA) 29 W UTC-6(-5DT) N41°54.42' W88°14.88'  
759 B ARFF Index—See Remarks NOTAM FILE DPA MON Airport

**CHICAGO**  
**COPTER**  
H-5E, L-28H, A  
IAF, AD

**RWY 02L-20R:** H7571X150 (CONC-GRVD) S-30, D-45 HIRL CL

**RWY 02L:** MALS.R. TDZL. RVR-T

**RWY 20R:** PAPI(P4L)—GA 3.0° TCH 40'. RVR-R

**RWY 02R-20L:** H6451X100 (CONC-GRVD) S-30, D-45 MIRL

**RWY 02R:** Rgt tfc.

**RWY 10-28:** H4750X75 (ASPH-GRVD) S-30, D-45 HIRL

**RWY 10:** RLLS. REIL. VASI(V4L)—GA 3.0° TCH 50'. Bldg.

**RWY 28:** REIL. PAPI(P4L)—GA 3.0° TCH 40'.

**RWY 15-33:** H3399X100 (ASPH) S-30, D-45, 2D-100 MIRL

**RWY 15:** REIL. PAPI(P4R)—GA 3.9° TCH 42'. Tree.

**RWY 33:** REIL. Thld dsplcd 190'. Tree.

**SERVICE:** S4 **FUEL** 100LL, JET A **OX** 1, 2, 3, 4 **LGT** ATC—Ctl. Rwy 10 VASI unusbl byd 5° right and left of centerline.

**AIRPORT REMARKS:** Attended continuously. Deer, coyote, birds and migratory waterfowl on and in/ov arpt. 100LL self service avbl 24 hrs with credit card. ARFF Index B PPR. Acft on short final to Rwy 15 are not visible from tower due to trees. Int dep Rwy 20R at Twy G has 6141 ft. U.S. Customs user fee arpt. U.S. cust svc avbl PPR.

**AIRPORT MANAGER:** 630-584-2211

**WEATHER DATA SOURCES:** ASOS (630) 587-3668 LAWRWS.

**COMMUNICATIONS:** ATIS 132.075 **UNICOM** 122.95

**RCO** 122.3 122.1R 108.4T (KANKAKEE RADIO)

Ⓡ **CHICAGO APP/DEP CON** 133.5

**TOWER** 120.9 124.5 **GND CON** 121.8 **CLNC DEL** 119.75

**AIRSPACE:** CLASS D.

**RADIO AIDS TO NAVIGATION:** NOTAM FILE DPA.

(L) (L) **VOR/W/DME** 108.4 DPA Chan 21 N41°53.42' W88°21.01' 076° 4.7 NM to fld. 802/2E.

VOR unusable:

290°-310° byd 35 NM

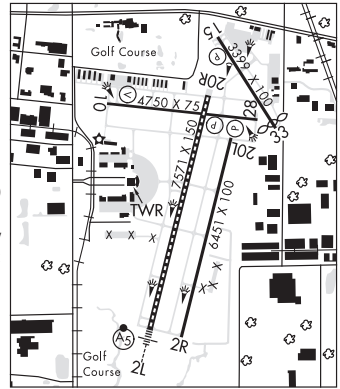
DME unusable:

290°-340° byd 35 NM

**ILS** 111.7 I-GVK Rwy 02L. Class IT.

**ILS** 109.5 I-DPA Rwy 10. Class IB.

**COMM/NAV/WEATHER REMARKS:** Emerg frequency 121.5 not available at twr.



**CIVIC MEM** N38°53.54' W90°03.38' NOTAM FILE ALN.  
NDB (MHW) 263 CVM at St Louis Rgnl. 538/1W.

**ST LOUIS**  
A

**COLES CO MEML** (See MATTOON/CHARLESTON on page 69)

**COLUMBIA**

**SACKMAN FLD** (H49) 2 WNW UTC-6(-5DT) N38°27.14' W90°14.16'  
420 NOTAM FILE STL

**ST LOUIS**

**RWY 03-21:** 2450X150 (TURF) LIRL(NSTD)

**RWY 21:** Rgt tfc.

**SERVICE:** **LGT** For Rwy lgts key 122.9 3 clicks. Lgts go off after 15 min. Rwy 03-21 NSTD LIRL due to uneven spacing and non-frangible mounts.

**AIRPORT REMARKS:** Unattended. Admin bldg can be accessed by ciper lock which has applicable instructions. Rwy 03 54' powerline marked with orange balls 1355' from rwy end, 25:1 apch slope. Arpt CLOSED to helicopter ops. Seasonal crops within the primary surface area. Segmented circle and traffic arms are bright orange.

**AIRPORT MANAGER:** 618-781-3684

**COMMUNICATIONS:** **CTAF** 122.9

**CLEARANCE DELIVERY PHONE:** For CD ctc St Louis Apch at 314-890-1017.