

GRAND RAPIDS/ITASCA CO—GORDON NEWSTROM FLD (GPZ)(KGPZ) 2 SE UTC-6(-5DT)

TWIN CITIES

H-2J, L-14H

IAP

N47°12.56' W93°30.60'

1356 B NOTAM FILE GPZ

RWY 16-34: H5756X100 (ASPH-PFC) S-23, D-38, 2D-78 HIRL

1.0% up S

RWY 16: REIL. PAPI(P4R)—GA 3.0° TCH 50'.**RWY 34:** MALSR. PAPI(P4L)—GA 3.0° TCH 53'. Tree.**RWY 05-23:** H3000X60 (ASPH) S-125 MIRL 0.3% up SW**RWY 05:** REIL. PAPI(P4L)—GA 3.5° TCH 50'.**RWY 23:** REIL. PAPI(P4L)—GA 3.0° TCH 41'.**SERVICE:** S4 FUEL 100LL, JET A **OX 2** LGT ACTIVATE MALSR Rwy 34; REIL Rwy 05, Rwy 16, Rwy 23; PAPI Rwy 05, Rwy 16, Rwy 23, Rwy 34; MIRL Rwy 05-23; HIRL Rwy 16-34—CTAF. Rwy 05 PAPI unusable byd 6° left and right of centerline.**AIRPORT REMARKS:** Attended Apr-Oct 1300-0300Z†, Nov-Mar 1300-0200Z†. Deer and birds on and in/ov arpt. Lily Lake SPB ops north of arpt; PPR rqr ctc 218-326-1226. Rwy 34 calm wind rwy. Rwy 16-34 228' paved area at north end of rwy.**AIRPORT MANAGER:** 218-326-7625**WEATHER DATA SOURCES:** AWOS-3PT 118.425 (218) 326-8337.**COMMUNICATIONS:** CTAF/UNICOM 122.8

RCO 122.05 (PRINCETON RADIO)

Ⓜ MINNEAPOLIS CENTER APP/DEP CON 127.9

CLEARANCE DELIVERY PHONE: For CD if una to ctc on FSS freq, ctc Minneapolis ARTCC at 651-463-5588.**AIRSPACE:** CLASS E svc 1100-0300Z† Mon-Sat, 1400-0300Z† Sun; other times CLASS G.**RADIO AIDS TO NAVIGATION:** NOTAM FILE GPZ.

(L) (L) VOR/DME 111.4 GPZ Chan 51 N47°09.81' W93°29.34' 337° 2.9 NM to fld. 1359/6E.

DME unusable:

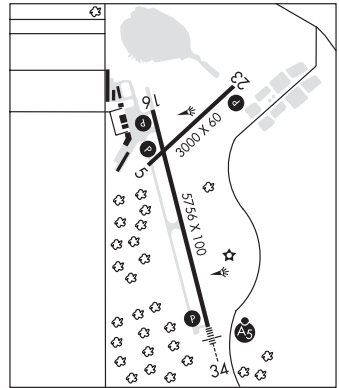
140°-215° byd 20 NM blo 3,000'

215°-045° byd 20 NM blo 3,500'

VOR unusable:

120°-192° byd 12 NM blo 5,000'

ILS 110.1 I-GPZ Rwy 34. Class IT.

**GRANITE FALLS MUNI/LENZEN—ROE-FAGEN MEML FLD** (GDB)(KGDB) 4 S UTC-6(-5DT)

TWIN CITIES

L-12I, 14H

IAP

N44°45.15' W95°33.33'

1048 B NOTAM FILE GDB

RWY 15-33: H4357X75 (ASPH) MIRL**RWY 15:** REIL. PAPI(P4L)—GA 3.0° TCH 42'.**RWY 33:** REIL. PAPI(P4L)—GA 3.0° TCH 42'. Thld dsplcd 642'. Road.**SERVICE:** FUEL 100LL LGT MIRL Rwy 15-33 preset on low ints, to increase ints and ACTIVATE REIL Rwy 15 and Rwy 33, PAPI Rwy 15 and Rwy 33—CTAF.**NOISE:** Noise sensitive area 1.5 miles in radius off north end of Rwy 15-33.**AIRPORT REMARKS:** Unattended. Deer on and in/ov arpt. Arpt info phone number: 320-564-5665. Self service fuel avbl 24 hrs with credit card. NOTE: See Special Notices—Aerobatic Practice Areas.**AIRPORT MANAGER:** 507-476-5939**WEATHER DATA SOURCES:** AWOS-3 120.1 (320) 564-9388.**COMMUNICATIONS:** CTAF/UNICOM 122.8

Ⓜ MINNEAPOLIS CENTER APP/DEP CON 127.1

GCO 121.725 (MINNEAPOLIS CENTER and PRINCETON RADIO)

CLEARANCE DELIVERY PHONE: For CD if una via GCO ctc Minneapolis ARTCC at 651-463-5588.**RADIO AIDS TO NAVIGATION:** NOTAM FILE MVE.

MONTEVIDEO (T) (T) VOR/DME 111.6 MVE Chan 53 N44°58.36' W95°42.73' 148° 14.8 NM to fld. 1037/5E.

VOR/DME unmonitored.

VOR unusable:

080°-150°

185°-195°

