

ALLIANCE MUNI (AIA)(KAIA) 3 SE UTC-7(-6DT) N42°03.19' W102°48.23'CHEYENNE
H-5A, L-12G
IAP, AD3931 B Class III, ARFF Index A NOTAM FILE AIA
RWY 12-30: H9203X150 (ASPH-AFSC) S-36, D-48, 2D-80

PCN 42 F/A/W/U MIRL

RWY 12: REIL. VASI(V4L)—GA 3.0° TCH 39'.

RWY 30: MALSR. PAPI(P4L)—GA 3.0° TCH 53'.

RWY 17-35: H6311X75 (ASPH) S-24, D-30 PCN 17 F/A/W/U

RWY 08-26: H6190X75 (ASPH-PFC) S-36, D-48, 2D-80

PCN 28 F/A/W/U MIRL

RUNWAY DECLARED DISTANCE INFORMATION

RWY 08: TORA-6190 TODA-6190 ASDA-6190 LDA-6190

RWY 12: TORA-9202 TODA-9202 ASDA-9202 LDA-9202

RWY 17: TORA-6311 TODA-6311 ASDA-6311 LDA-6311

RWY 26: TORA-6200 TODA-6200 ASDA-6200 LDA-6200

RWY 30: TORA-9202 TODA-9202 ASDA-9202 LDA-9202

RWY 35: TORA-6311 TODA-6311 ASDA-6311 LDA-6311

SERVICE: S4 FUEL 100LL, JET A LGT Actvt MALSR Rwy 30; REIL Rwy 12; VASI Rwy 12; PAPI Rwy 30; MIRL Rwy 12-30 and Rwy 08-26—CTAF.

AIRPORT REMARKS: Attended continuously. Migratory waterfowl on and invof arpt. Ultralight and glider ops on and invof arpt. Haying ops on interior of arpt during summer months. Rwy 08-26 designated calm wind.

Aerial spraying ops on and invof arpt. Occasional use by acct with no radio. Back taxiing. Rwy 17-35 unavbl for use by air carriers. Rwy 17-35 not avbl for sked acr opns with more than 9 psgr seats or unsked acr at least 31 psgr seats.

AIRPORT MANAGER: 308-762-4512**WEATHER DATA SOURCES:** ASOS 135.075 (308) 762-1221.**COMMUNICATIONS:** CTAF/UNICOM 123.0

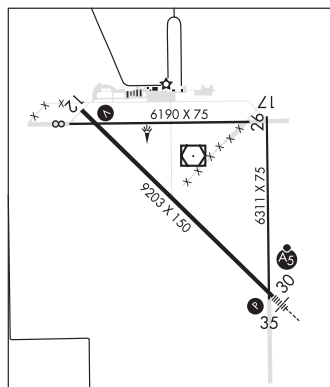
RCO 122.3 (COLUMBUS RADIO)

® DENVER CENTER APP/DEP CON 127.95

CLEARANCE DELIVERY PHONE: For CD if una to ctc on FSS freq, ctc Denver ARTCC at 303-651-4257.**RADIO AIDS TO NAVIGATION:** NOTAM FILE AIA.

(L) (L) VORW/DME 111.8 AIA Chan 55 N42°03.34' W102°48.27' at fld. 3925/11E.

ILS/DME 108.35 I-BYE Chan 20(Y) Rwy 30. Class IE. Unmonitored.

**ALMA****ALMA MUNI** (4D9) 1 NE UTC-6(-5DT) N40°06.75' W99°20.79'OMAHA
L-10H
IAP

2073 B NOTAM FILE OLU

RWY 17-35: H3200X60 (CONC) MIRL 0.3% up N

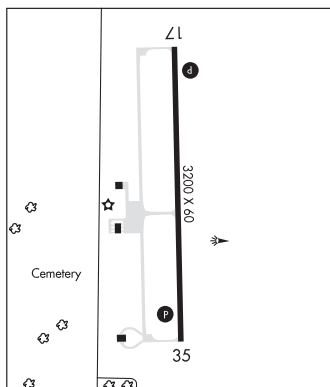
RWY 17: PAPI(P2L)—GA 3.0° TCH 40'.

RWY 35: PAPI(P2L)—GA 3.0° TCH 40'. Pole.

SERVICE: FUEL 100LL LGT ACTIVATE MIRL Rwy 17-35; PAPI Rwy 17 and Rwy 35—CTAF. Beacon lgt clear and green.

AIRPORT REMARKS: Unattended. Self svc fuel avbl 24 hrs via credit card system. Unmarked, unlighted twr 6 NM northwest of arpt at 2458' MSL. Segmented circle concrete in ground.**AIRPORT MANAGER:** 308-470-0563**COMMUNICATIONS:** CTAF 122.9

® DENVER CENTER APP/DEP CON 132.7

CLEARANCE DELIVERY PHONE: For CD ctc Denver ARTCC at 303-651-4257.**HARLAN CO LAKE SPB** (H63) 6 SW UTC-6(5-5DT) N40°03.53' W99°16.92'

OMAHA

1946 NOTAM FILE OLU

WATERWAY E-W: 6000X200 (WATER)

SEAPLANE REMARKS: Unattended. 1 May-30 Sep, holidays pilots watch for boats.

AIRPORT MANAGER: 308-799-2105**COMMUNICATIONS:** CTAF 122.9**CLEARANCE DELIVERY PHONE:** For CD ctc Denver ARTCC at 303-651-4257.