

NANTUCKET MEML (ACK)(KACK) 3 SE UTC-5(-4DT) N41°15.18' W70°03.59'

NEW YORK

47 B ARFF Index—See Remarks NOTAM FILE ACK

H-10J, 12K, L-33D

RWY 06-24: H6303X150 (ASPH-GRVD) S-75, D-170, 2S-175,

2D-280 PCN 38 F/A/X/T HIRL CL 0.3% up NE

RWY 06: MALSF. PAPI(P4R)—GA 3.0° TCH 57'. RVR-TR Thld dspclcd 537'.

RWY 24: SSALR. TDZL. PAPI(P4L)—GA 3.0° TCH 48'. RVR-TR

RWY 15-33: H4500X100 (ASPH) S-60, D-85, 2S-108, 2D-155

PCN 37 F/A/X/T MIRL

RWY 15: REIL. Bldg.

RWY 33: REIL. PAPI(P4L)—GA 3.0° TCH 45'.

RWY 12-30: H2696X50 (ASPH) S-12.4 RWY LGTS(NSTD)

RWY 12: Pole.

LAND AND HOLD—SHORT OPERATIONS

LDG RWY	HOLD—SHORT POINT	AVBL LDG DIST
RWY 06	15-33	4316
RWY 33	06-24	3650

RUNWAY DECLARED DISTANCE INFORMATION

RWY 06: TORA-6303 TODA-6303 ASDA-6303 LDA-5766
RWY 12: TORA-2696 TODA-2696 ASDA-2696 LDA-2696
RWY 15: TORA-4500 TODA-4500 ASDA-4500 LDA-4500
RWY 24: TORA-6303 TODA-6303 ASDA-6303 LDA-6303
RWY 30: TORA-2696 TODA-2696 ASDA-2696 LDA-2696
RWY 33: TORA-4500 TODA-4500 ASDA-4500 LDA-4500

SERVICE: FUEL 100LL, JET A LGT Rwy 24 SSALR unmonitored when twr clsd. When ATCT clsd actvt MALSF Rwy 06; SSALR Rwy 24; HIRL Rwy 06-24, MIRL Rwy 15-33; twy lgts—CTAF. PAPI Rwy 06, 24 and 33 opr 24 hrs. Rwy 12-30 lgtd as twy.

NOISE: Arpt has noise abatement procs ctc Noise Officer 508-325-5300. NOTE: See Special Notices—VFR Noise Abatement Procedures.

AIRPORT REMARKS: Attended continuously. Deer and birds on and invof arpt. Be aware of hi-speed mil jet and heavy helicopter tfc vicinity Air Station Cape Cod. Rwy 12-30 CLOSED permly. Class I, ARFF Index B. PPR 2 hrs for unsked acr ops with more than 9 pax seats. Call AMGR 508-325-5300. Twy F rstrd to sml acft 12,500 lbs or less. Twy G btn Twy H & Twy E runup pad for Rwy 24 rstrd to acft wingspan 94 ft or less when twr clsd. Twy G btn Twy H & secure coml ramp rstrd to acft wingspan 78 ft or less. Twy G btn Rwy 15 & Twy E runup pad for Rwy 24 clsd when twr clsd. Fee for non-commercial acft parking. NOTE: See Special Notices—VFR Noise Abatement Procedures.

AIRPORT MANAGER: 508-325-5300

WEATHER DATA SOURCES: ASOS (508) 325-6082 LAWRS.

COMMUNICATIONS: CTAF 118.3 ATIS 127.5 (508) 228-5375 UNICOM 122.95

RCO 122.1R 116.2T (BRIDGEPORT RADIO)

Ⓡ **BOSTON CONSOLIDATED TRACON APP/DEP CON** 126.1 (1100-0400Z‡) May 15-Sep 30, (1100-0300Z‡) Oct 1-May 14.

Ⓡ **BOSTON CENTER APP/DEP CON** 128.75 (0400-1100Z‡) May 15-Sep 30, (0300-1100Z‡) Oct 1-May 14.

TOWER 118.3 May 15-Sep 30 (1100-0300Z‡), Oct 1-May 14 (1100-0200Z‡).

GND CON 132.5 CLNC DEL 119.375

CLEARANCE DELIVERY PHONE: For CD if twr clsd & una to ctc FSS freq, ctc Boston Apch at 603-594-5554. when Apch clsd ctc Boston ARTCC at 603-879-6859.

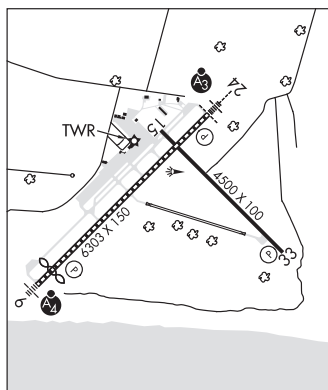
AIRSPACE: CLASS D svc 1100-0300Z‡ May 15-Sep 30, 1100-0200Z‡ Oct 1-May 14; other times CLASS G.

RADIO AIDS TO NAVIGATION: NOTAM FILE ACK.

(H) (H) VOR/DME 116.2 ACK Chan 109 N41°16.91' W70°01.60' 236° 2.3 NM to fld. 99/15W.

ILS/DME 109.1 I-RNE Chan 28 Rwy 06. Class IE. LOC unusable byd 28° right of course.

ILS/DME 109.1 I-ACK Chan 28 Rwy 24. Class IE. Unmonitored when ATCT clsd.



NAUSET N41°41.52' W69°59.26' NOTAM FILE CQX.

NEW YORK

NDB (MHW) 279 CQX at Chatham Muni. 56/16W.

L-33D

NDB unusable:

220°-280° byd 20 NM