

**NEW BEDFORD RGNL** (EWB)(KEWB) 2 NW UTC-5(-4DT) N41°40.59' W70°57.47'

NEW YORK

79 B LRA Class IV, ARFF Index A NOTAM FILE EWB

H-10J, 11D, 12K, L-33D

**RWY 05-23:** H5400X150 (ASPH-GRVD) S-30, D-108, 2S-137,

IAP, AD

2D-195 HIRL 0.3% up NE

**RWY 05:** MALSR. RVR-T Tree.

**RWY 23:** MALSR. PAPI(P4L)—GA 3.0° TCH 46'. RVR-R Thld dsplcd 400'. Tree.

**RWY 14-32:** H5002X75 (ASPH) S-33, D-48, 2D-95 MIRL

**RWY 14:** PAPI(P4L)—GA 3.42° TCH 50'. Tree.

**RWY 32:** REIL. PAPI(P4L)—GA 3.5° TCH 50'. Trees.

**SERVICE:** S4 FUEL 100LL, JET A OX 3, 4 LGT When twr clsd

ACTIVATE MALSR Rwy 05 and Rwy 23, REIL Rwy 32, HIRL Rwy

05-23, MIRL Rwy 14-32—CTAF. PAPI Rwy 14, Rwy 23 and Rwy 32

ops 24 hrs.

**AIRPORT REMARKS:** Attended 1100-0400Z†. Birds and wildlife on and invof

arpt. Ldg fees for acct over 5,500 lbs. Arpt clsd to non sked acr acct

with more than 31 pax exc 48 hr PPR 508-991-6161. Flight

Notification Service (ADCUS) available.

**AIRPORT MANAGER:** (508) 991-6161

**WEATHER DATA SOURCES:** ASOS 126.85 (508) 992-0195. LAWRS.

**COMMUNICATIONS:** CTAF 118.1 ATIS 126.85 (508) 994-6277 UNICOM

122.95

Ⓡ **PROVIDENCE APP/DEP CON** 128.7 (Sun-Fri 1030-0530Z†, Sat 1030-0500Z†) other times ctc

**BOSTON CENTER APP/DEP CON** 124.85

**TOWER** 118.1 (1130-0300Z†) **GND CON** 121.9

**CLEARANCE DELIVERY PHONE:** For CD when Apch clsd ctc Boston ARTCC at 603-879-6859.

**AIRSPACE:** CLASS D svc 1130-0300Z†; other times CLASS G.

**RADIO AIDS TO NAVIGATION:** NOTAM FILE PVD.

**PROVIDENCE (H) (H) VORW/DME** 115.6 PVD Chan 103 N41°43.46' W71°25.78' 112° 21.4 NM to fld. 49/14W.

VOR portion unusable:

085°-105° byd 12 NM blo 5,500'

085°-105° byd 8 NM blo 3,000'

106°-294° byd 30 blo 3,000'

295°-330° byd 30 blo 6,000'

331°-084° byd 30 blo 3,000'

DME portion unusable:

085°-105° byd 12 NM blo 5,500'

085°-105° byd 8 NM blo 3,000'

106°-152° byd 11 NM blo 2,000'

106°-152° byd 20 NM blo 4,000'

153°-294° byd 30 NM blo 3,000'

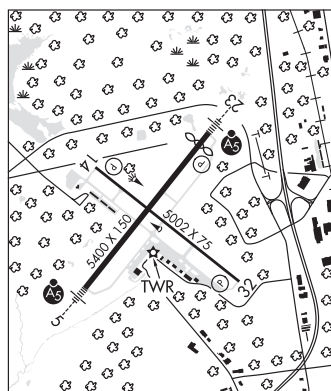
295°-330° byd 30 blo 6,000'

331°-084° byd 30 blo 3,000'

**ILS/DME** 109.7 I-EWB Chan 34 Rwy 05. Unmonitored when ATCT clsd. Autopilot cpd apch blw 470' na. Localizer

backcourse unusable 15° left and r of course; byd 12 NM. Backcourse DME unusable 15° left and r of course; byd 12

NM.



**NEWBURYPORT**

**PLUM ISLAND** (2B2) 1 SE UTC-5(-4DT) N42°47.72' W70°50.37'

NEW YORK

11 NOTAM FILE BDR

**RWY 14-32:** 2300X100 (TURF)

**RWY 14:** Trees.

**RWY 32:** Trees.

**RWY 10-28:** H2105X50 (ASPH) S-8

**RWY 10:** Trees.

**RWY 28:** Thld dsplcd 300'. Fence.

**SERVICE:** S4 FUEL 100LL

**AIRPORT REMARKS:** Attended Apr-Sep 1300-2300Z†. Attended irregularly Oct-Mar. Wildlife invof arpt. No touch and go allowed.

**AIRPORT MANAGER:** 978-463-4222

**COMMUNICATIONS:** CTAF/UNICOM 123.0

Ⓡ **BOSTON APP/DEP CON** 124.4

**CLEARANCE DELIVERY PHONE:** For CD ctc Boston Apch at 603-594-5552.