

NEWARK LIBERTY INTL (EWR)(KEWR) 3 S UTC-5(-4DT) N40°41.55' W74°10.12'

NEW YORK

17 B LRA Class I, ARFF Index E NOTAM FILE EWR

COPTER

RWY 04L-22R: H11000X150 (ASPH-CONC-GRVD) D-210, 2D-520, 2D/2D2-1000 PCN 96 R/B/X/T HIRL CL

H-101, 12J, L-33A, 34H

RWY 04L: MALS. TDZL. PAPI(P4L)—GA 3.1° TCH 77'. RVR-TMR Thld dsplcd 2540'. Tree.

IAP, AD

RWY 22R: MALS. TDZL. REIL. PAPI(P4L)—GA 3.1° TCH 70'. RVR-TMR Thld dsplcd 1440'. Pole.

RWY 04R-22L: H10000X150 (ASPH-GRVD) D-210, 2D-520, 2D/2D2-1000 PCN 96 R/B/W/T HIRL CL

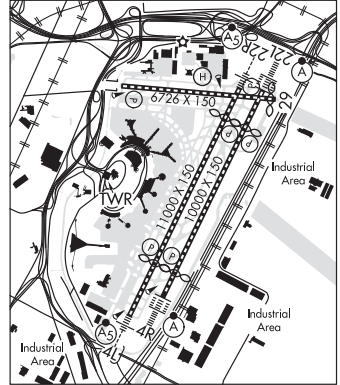
RWY 04R: ALSF2. TDZL. PAPI(P4R)—GA 2.95° TCH 71'. RVR-TMR Thld dsplcd 1190'. Pole.

RWY 22L: ALSF2. TDZL. PAPI(P4L)—GA 3.0° TCH 60'. RVR-TMR Thld dsplcd 1793'. Antenna.

RWY 11-29: H6726X150 (ASPH-GRVD) D-210, 2D-520, 2D/2D2-1000 PCN 96 R/B/W/T HIRL CL

RWY 11: TDZL. REIL. PAPI(P4R)—GA 3.0° TCH 60'. RVR-TMR Bldg.

RWY 29: TDZL. REIL. PAPI(P4R)—GA 3.0° TCH 60'. Thld dsplcd 224'. Sign.



LAND AND HOLD—SHORT OPERATIONS

LDG RWY	HOLD—SHORT POINT	AVBL LDG DIST
RWY 04L	11-29	7750
RWY 04R	11-29	8100
RWY 11	04R-22L	5700

RUNWAY DECLARED DISTANCE INFORMATION

RWY 04L:TORA-11000 TODA-11000 ASDA-11000 LDA-8460
RWY 04R:TORA-10000 TODA-10000 ASDA-10000 LDA-8810
RWY 11: TORA-6726 TODA-6726 ASDA-6726 LDA-6726
RWY 22L:TORA-10000 TODA-10000 ASDA-10000 LDA-8207
RWY 22R:TORA-11000 TODA-11000 ASDA-11000 LDA-9560
RWY 29: TORA-6726 TODA-6726 ASDA-6726 LDA-6502

ARRESTING GEAR/SYSTEM

RWY 11: EMAS

RWY 29: EMAS

SERVICE: S4 FUEL 100LL, JET A OX 3 LGT Rwy status lgts in opr. Rwy 29 PAPI unusbl 4° left of cntrn.

NOISE: Noise restrictions call 212-435-3784 during normal business hrs.

AIRPORT REMARKS: Special Air Traffic Rules—Part 93. Attended continuously. Flocks of birds on and in/ovf airport. Para-sail and banner towing ops 1000' and blo in upper and lower New York bays including Rockaway Inlet indef. High volume of low level helicopter tfc arriving and departing Helo Kearny Heliport (65NJ) located 3.5 miles northeast of the arpt. Expect to leave and re-enter the Class B Airspace during moderate to heavy arrival periods. Rwy 04L-22R, south 1779' conc, north 1228' conc, center 7993' asph. ASDE-X in use. Operate transponders with altitude reporting mode and ADS-B (if equipped) enabled on all airport surfaces. Rwy 04R and Rwy 04L departures use upper antenna for ATC communications. Twy Z between Twy Z2 and Twy Z4 clsd to acft with wingspans in excess of 171'. ADG IV acft restriction from passing Twy Z3 on Twy Z. Twy Z east of Twy U acft speed restriction of 17kts/20mph max for all acft with wingspans in excess of 171'. All twys surrounding "ballpark" parking area (Twy Y btn Twy S and Twy U, Twy S btn Twy Y and Twy K, Twy K btn Twy S and Twy B, Twy B btn Twy K and Twy U and Twy U btn Twy B and Twy Y) acft speed restriction of 17kts/20mph for all acft with wingspans in excess of 171'. Twy EE btn Rwy 04R-22L and Rwy 11-29 clsd to acft with wingspans in excess of 171'. Twy Y btn RM and Twy U, speed restriction of 17 kts (20 mph). Twy A btn Twy AA and ramp clsd to acft with wingspans in excess of 171 ft. Twy Z5 clsd to acft with wingspans in excess of 118'. Twy A11 W of Twy A acft spd rstr of 17 kts/20 mph max for all acft with wingspans in excess of 171'. Acft with wingspans in excess of 118' prohibited from turning S on Twy R from Twy B1. Ldg fee. Flight Notification Service (ADCUS) avbl.

AIRPORT MANAGER: 973-961-6161

WEATHER DATA SOURCES: ASOS (973) 621-2892 LLWAS. TDWR.

COMMUNICATIONS: D-ATIS ARR 115.7 D-ATIS SOUTH ARR 134.825 (973) 824-4417. UNICOM 122.95

Ⓡ NEW YORK APP/DEP CON 132.8 (241°-269°) 128.55 (090°-240°) 127.6 (270°-330°) 132.7 (331°-089°)

Ⓡ NEW YORK APP/DEP CON 119.2

TOWER 118.3 134.05 **GND CON** 121.8 126.15 **CLNC DEL** 118.85

PRE TAXI CLNC 118.85 **RAMP CTL** 132.45

CPDLC DCL (LOGON KUSA)

PDC

CONTINUED ON NEXT PAGE

CONTINUED FROM PRECEDING PAGE

AIRSPACE: CLASS B See VFR Terminal Area Chart.

RADIO AIDS TO NAVIGATION: NOTAM FILE TEB.

TETERBORO (T) (T) VOR/DME 108.4 TEB Chan 21 N40°50.92' W74°03.73' 218° 10.6 NM to fld. 3/11W.

DME unusable:

060°-080° byd 22 NM blo 2,500'

081°-120° blo 4,000'

121°-180° blo 3,000'

236°-246°

VOR unusable:

081°-120° blo 4,000'

121°-180° blo 3,000'

236°-246°

ILS/DME 110.75 I-EWR Chan 44(Y) Rwy 04L. Class IID. DME shared with ILS Rwy 22R.

ILS/DME 108.7 I-EZA Chan 24 Rwy 04R. Class IIIE. DME serves Rwy 04L and Rwy 22L. DME unusable byd 15 NM.

ILS/DME 109.15 I-GPR Chan 28(Y) Rwy 11. Glideslope unusable byd 5° right and left side of course and .7 NM (300' MSL) inbound. LOC unusable byd 25° left of course. Autopilot cpd apch not avbl blw 350' MSL.

ILS/DME 108.7 I-LSQ Chan 24 Rwy 22L. Class IIIE. LOC unusable byd 20° left of course.

ILS/DME 110.75 I-JNN Chan 44(Y) Rwy 22R. Class IT. AYRON OM is also used for Rwy 22L. DME shared with ILS Rwy 04L. Localizer unusable byd 20° left of course.

COMM/NAV/WEATHER REMARKS: Durg ATC zero events; arpt ops will mnt 118.3 and provide emerg notifications to ARFF.

HELIPAD H1: H54X54 (ASPH) PERIMETER LGTS

HELIPORT REMARKS: Helipad H1 perimeter lgts. Brewster pad; H1 located on Twy Z5. Ops limits are D65.

OCEAN CITY MUNI (26N) 2 SW UTC-5(-4DT) N39°15.81' W74°36.45'

6 NOTAM FILE MIV

RWY 06-24: H2972X60 (ASPH) S-12.5 MIRL

RWY 06: PAPI(P2R)—GA 3.5° TCH 36'.

RWY 24: PAPI(P2L)—GA 3.5° TCH 37'. Tree. Rgt tfc.

SERVICE: FUEL 100LL **LGT** ACTIVATE MIRL Rwy 06-24—CTAF.

AIRPORT REMARKS: Attended Jun-Sep 1300-2300Z†, winter 1300-2100Z†.

Birds on and invof arpt.

AIRPORT MANAGER: (609) 525-9222

WEATHER DATA SOURCES: AWOS-AV 119.775 (609) 398-0705.

COMMUNICATIONS: CTAF/UNICOM 122.7

Ⓡ ATLANTIC CITY APP/DEP CON 124.6

CLNC DEL 133.6

CLEARANCE DELIVERY PHONE: For CD ctc Washington ARTCC at 703-771-3587.

RADIO AIDS TO NAVIGATION: NOTAM FILE ACY.

ATLANTIC CITY (L) (L) VORTACW 108.6 ACY Chan 23 N39°27.35'

W74°34.58' 197° 11.6 NM to fld. 67/10W.

VORTAC unusable:

290°-300° byd 10 NM blo 4,000'

VOR portion unusable:

301°-355° byd 35 NM blo 2,000'

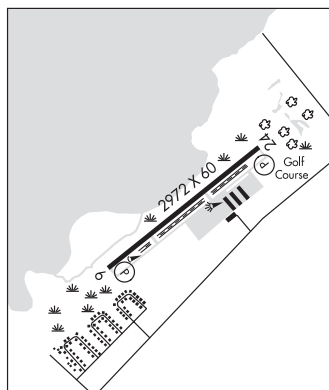
CEDAR LAKE (L) (L) VORW/DME 115.2 VCN Chan 99 N39°32.26'

W74°58.03' 144° 23.5 NM to fld. 120/10W. NOTAM FILE MIV.

WASHINGTON

L-34G

IAP



OCEAN CO (See TOMS RIVER on page 181)