

SUSSEX (FWN)(KFWN) 1 SW UTC-5(-4DT) N41°12.01' W74°37.38'

NEW YORK

422 B NOTAM FILE MIV

L-33A, 34H

RWY 03-21: H3506X75 (ASPH) MIRL 0.6% up SW

IAP

RWY 03: REIL. PAPI(P2L)—GA 4.0° TCH 40'. Thld dsplcd 466'. Trees.

RWY 21: REIL. Thld dsplcd 756'. Trees.

SERVICE: S4 FUEL 100LL, JET A LGT PAPI and REIL Rwy 03 OTS indef. Rwy 21 REIL OTS indef. ACTIVATE MIRL Rwy 03-21 and REIL Rwy 03 and Rwy 21—CTAF.

AIRPORT REMARKS: Attended 1300Z±-dusk. Parachute Jumping. Deer and birds on and in/ov arpt. Fuel self-svc. Drop zone located southwest side of rwy. Main twy southwest 1500' clsd. Twys in poor condition with potholes, cracks, and asphalt breaking up. Non-standard twy markings. No TGL allowed.

AIRPORT MANAGER: (973) 702-1640

WEATHER DATA SOURCES: ASOS 118.525 (973) 875-0859.

COMMUNICATIONS: CTAF/UNICOM 122.7

Ⓡ NEW YORK APP/DEP CON 127.6

CLEARANCE DELIVERY PHONE: For CD ctc New York ApcH at 800-645-3206.

RADIO AIDS TO NAVIGATION: NOTAM FILE MIV.

SPARTA (H) (H) VORTACW 115.7 SAX Chan 104 N41°04.05' W74°32.30' 345° 8.8 NM to fld. 1400/11W.

VOR unusable:

075°-085° blo 6,500'

155°-165°

TETERBORO (TEB)(KTEB) 1 SW UTC-5(-4DT) N40°51.01' W74°03.65'

NEW YORK

8 B TPA—See Remarks LRA ARFF Index—See Remarks NOTAM FILE TEB

COPTER

RWY 01-19: H7000X150 (ASPH-GRVD) S-50, D-100 PCN 35 F/C/X/T

H-10I, 12J, L-33B, 34H

HIRL CL

IAP, AD

RWY 01: REIL. VASI(V4R)—GA 3.46° TCH 59'. Thld dsplcd 771'. Tree.

RWY 19: TDZL. REIL. PAPI(P4L)—GA 3.0° TCH 57'. Thld dsplcd 763'. Bldg.

RWY 06-24: H6013X150 (ASPH-GRVD) S-50, D-100 PCN 35 F/C/X/T

HIRL CL

RWY 06: MALSR. TDZL. REIL. RVR-TR Tree.

RWY 24: REIL. PAPI(P4L)—GA 3.2° TCH 46'. RVR-TR Tree.

LAND AND HOLD-SHORT OPERATIONS

LDG RWY	HOLD-SHORT POINT	AVBL LDG DIST
RWY 01	06-24	4550
RWY 06	01-19	3750

RUNWAY DECLARED DISTANCE INFORMATION

RWY 01: TORA-7000 TODA-7000 ASDA-6932 LDA-6161
RWY 06: TORA-6013 TODA-6013 ASDA-6013 LDA-6013
RWY 19: TORA-7000 TODA-7000 ASDA-7000 LDA-6230
RWY 24: TORA-6013 TODA-6013 ASDA-6013 LDA-6013

ARRESTING GEAR/SYSTEM

RWY 06: EMAS

RWY 19: EMAS

RWY 24: EMAS

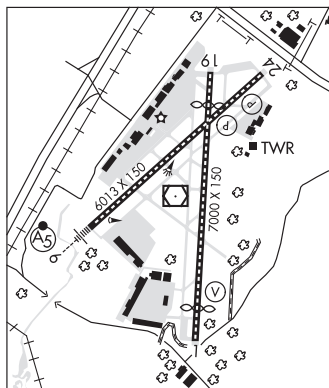
SERVICE: S4 FUEL 100LL, JET A OX 1, 2, 3, 4 LGT Rwy 01-19 dsplcd thld centerline lgts OTS indef.

NOISE: Aclt and helicopter noise abatement rules in effect, ctc noise abatement office 201-393-0399/288-1775 for copy of procedures and rules prior to arrival. Rwy 24 noise critical rwy maximum noise limit of 80 db between 0300-1200Z± and 90 db all other hrs. NOTE: See Special Notices—Terminal Area Graphic Notice.

AIRPORT REMARKS: Attended continuously. CLOSED to motorless aclt, uncontrolled aclt and ultralight activity exc by prior permission. Deer and bird activity on and in/ov arpt. All aclt avoid hospital 1.7 miles north of Rwy 01-19. Helicopter ops over residential areas blo 1000' MSL should be avoided. Daily continuous construction activity all quadrants. Stage I aclt not permitted to opr at Teterboro Arpt. Aclt capable of opr abv 100,000 lbs must submit certification to arpt manager verifying aclt opr weight is less than 100,000 lbs. Ctc arpt ops at 201-288-1775 for forms. ARFF Index B equipment coverage provided. TPA—1500 (1492) for large/turbine aclt, 1000 (992) for all others. Rwy 19 VGSi and RNAV glidepath not coincident. RNAV (GPS) X Rwy 06 is prim RNAV apch to Rwy 06. Ldg fee. Flight Notification Service (ADCUS) available. NOTE: See Special Notices—Terminal Area Graphic Notice.

AIRPORT MANAGER: 201-288-1775

WEATHER DATA SOURCES: ASOS (201) 393-0855



CONTINUED ON NEXT PAGE

CONTINUED FROM PRECEDING PAGE

COMMUNICATIONS: D-ATIS 132.85 114.2 201-288-1690
 RCO 122.2 (MILLVILLE RADIO).

- Ⓡ NEW YORK APP CON 127.6 RAMP CTL 120.675
- TOWER 119.5 125.1 GND CON 121.9 CLNC DEL 128.05
- Ⓡ NEW YORK APP/DEP CON 119.2 126.7
- CPDLC (LOGON KUSA)
- PDC

AIRSPACE: CLASS D.

RADIO AIDS TO NAVIGATION: NOTAM FILE TEB.

(T) (T) VORW/DME 108.4 TEB Chan 21 N40°50.92' W74°03.73' at fld. 3/11W.

DME unusable:
 060°-080° byd 22 NM blo 2,500'
 081°-120° blo 4,000'
 121°-180° blo 3,000'
 236°-246°

VOR unusable:
 081°-120° blo 4,000'
 121°-180° blo 3,000'
 236°-246°

TORBY NDB (LOM) 214 TE N40°48.26' W74°07.95' 062° 4.3 NM to fld. LOM unusable byd 10 NM.

ILS 108.9 I-TEB Rwy 06. Class IE. LOM TORBY NDB. LOM unusable byd 10 NM. LOC unusable byd 14° left of course. Glideslope unusable byd 6° left of course.

ILS/DME 110.15 I-TJL Chan 38(Y) Rwy 19. Class IE. DME unusable byd 22° left of course.

COMM/NAV/WEATHER REMARKS: For radar svc blo 1800' ctc Teterboro twr frequency 119.5. Arpt ops frequency 130.575.

TOMS RIVER

OCEAN CO (MJX)(KMJX) 5 SW UTC-5(-4DT) N39°55.56' W74°17.73'
 86 B NOTAM FILE MJX

WASHINGTON
 H-101, 121, L-34G
 IAP

RWY 06-24: H5950X100 (ASPH) S-100, D-176, 2D-581
 PCN 45 F/A/X/T HIRL

RWY 06: MALSR. PAPI(P2L)—GA 3.0° TCH 56'.

RWY 24: REIL. PAPI(P2L)—GA 3.0° TCH 55'. Thld dsplcd 116'.

RWY 14-32: H3599X75 (ASPH) S-94, D-150 PCN 35 F/A/X/T MIRL
 0.3% Up NW

RWY 14: REIL. PAPI(P2L)—GA 3.0° TCH 40'.

RWY 32: REIL. PAPI(P2L)—GA 3.0° TCH 40'.

SERVICE: S4 FUEL 100LL, JET A OX3 LGT ACTIVATE MALSR Rwy 06;
 REIL Rwy 14, Rwy 32, Rwy 24; PAPI Rwy 06, Rwy 24, Rwy 14 and
 Rwy 32; HIRL Rwy 06-24; MIRL Rwy 14-32—CTAF.

AIRPORT REMARKS: Attended Apr-Oct 1300-0100Z†, Nov-Mar
 1300-2200Z†. Arpt unattended Christmas and New Years Day. Deer
 on and invof arpt.

AIRPORT MANAGER: (732) 929-2054

WEATHER DATA SOURCES: AWOS-3PT 119.875 (732) 797-2542.

COMMUNICATIONS: CTAF/UNICOM 122.7

- Ⓡ MC GUIRE APP/DEP CON 126.475

CLEARANCE DELIVERY PHONE: For CD use GCO 121.725, if una cta Mc Guire
 Apch at 609-754-2767.

RADIO AIDS TO NAVIGATION: NOTAM FILE MIV.

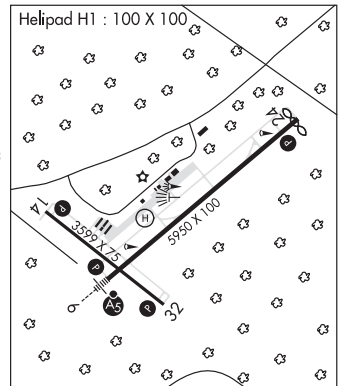
COYLE (H) (H) VORTACW 113.4 CYN Chan 81 N39°49.04' W74°25.90' 054° 9.1 NM to fld. 203/10W.

VOR unusable:
 044°-054° blo 3,800'

ILS 109.9 I-MJX Rwy 06. Class IA. Unmonitored.

• • • • •
 HELIPAD H1: H100X100 (ASPH)

HELIPORT REMARKS: Helipad H1 perimeter lights. ACTIVATE perimeter lgts—CTAF.



TORBY N40°48.27' W74°07.95' NOTAM FILE TEB.

NEW YORK

NDB (LOMW) 214 TE 062° 4.3 NM to Teterboro. 16/12W.

NDB unusable:
 Byd 10 NM