

**ERIE**

**ERIE INTL/TOM RIDGE FLD** (ERI)(KERI) 5 SW UTC-5(-4DT) N42°04.99' W80°10.44'

**DETROIT**  
H-10H, L-30H  
IAP, AD

732 B LRA ARFF Index—See Remarks NOTAM FILE ERI

**RWY 06-24:** H8420X150 (ASPH-GRVD) S-114, D-161, 2S-124, 2D-264 PCN 45 F/C/X/T HIRL

**RWY 06:** MALSR. PAPI(P4L)—GA 3.0° TCH 54'. RVR-TR Thld dsplcd 919'. Railroad.

**RWY 24:** MALSR. PAPI(P4L)—GA 3.0° TCH 55'. RVR-TR Trees.

**RWY 02-20:** H3508X150 (ASPH) S-50, D-60, 2D-150 MIRL

**RWY 02:** Thld dsplcd 817'. Railroad.

**RWY 24:** VASI(V4L)—GA 4.0° TCH 69'. Thld dsplcd 306'. Road.

**LAND AND HOLD—SHORT OPERATIONS**

LDG RWY	HOLD—SHORT POINT	AVBL LDG DIST
RWY 24	02-20	6550

**RUNWAY DECLARED DISTANCE INFORMATION**

**RWY 02:** TORA-3508 TODA-3508 ASDA-3337 LDA-2520

**RWY 06:** TORA-8420 TODA-8420 ASDA-8420 LDA-7501

**RWY 20:** TORA-3508 TODA-3508 ASDA-3208 LDA-2902

**RWY 24:** TORA-8420 TODA-8420 ASDA-7501 LDA-7501

**SERVICE:** S2 FUEL 100LL, JET A OX 3, 4 LGT When twr clsd **ACTIVATE**

MALSR Rwy 06 and Rwy 24, PAPI Rwy 06 and Rwy 24, HIRL Rwy 06-24, VASI Rwy 20, MIRL Rwy 02-20 and twy lghts—CTAF. Rwy 06 MALSR unmonitored. Rwy 24 MALSR unmonitored. Lgt'd supplemental windcone located at north side Rwy 24 1000' west AER.

**AIRPORT REMARKS:** Attended Mon-Fri 1000-0400Z‡, Sat-Sun 1000-0300Z‡. Birds on and in/ov arpt. Class I, ARFF Index B. Index C avail upon request. Rwy 02-20 clsd to sked acr ops more than 9 pax seats and non sked acr ops more than 30 pax seats exc taxi. Extensive non-radio and ultralight acft opr 3.5-5 NM southwest of arpt at or blo 700' AGL May 1-Oct 31 annually SR-SS. Ramp usage fee for acft clearing customs. Fee based on acft wgt, ctc arpt for fee sked. Flight Notification Service (ADCUS) available, prior reservation required, phone 814-833-1355.

**AIRPORT MANAGER:** 814-833-4258

**WEATHER DATA SOURCES:** ASOS 120.35 (814) 835-7112.

**COMMUNICATIONS:** CTAF 118.1 ATIS 120.35 UNICOM 122.95

Ⓡ **BUFFALO APP/DEP CON** 121.0 (1100-0500Z‡)

Ⓡ **CLEVELAND CENTER APP/DEP CON** 127.075 (0500-1100Z‡) or ctc Cleveland ARTCC at 440-774-0227.

**TOWER** 118.1 (1100-0500Z‡) **GND CON** 121.9 **CLNC DEL** 126.8

**CLEARANCE DELIVERY PHONE:** For CD ctc Buffalo Apch at 716-626-6920, when Apch clsd ctc Cleveland ARTCC at 440-774-0232.

**AIRSPACE:** CLASS D svc 1100-0500Z‡; other times CLASS E.

TRSA svc ctc **BUFFALO APP CON** within 20 NM

**RADIO AIDS TO NAVIGATION:** NOTAM FILE ERI.

(L) **TACAN** Chan 31 ERI (109.4) N42°01.04' W80°17.56' 059° 6.6 NM to fld. 797/6W.

TACAN AZIMUTH unusable:

076°-109° byd 30 NM blo 5,000'

110°-180° byd 25 NM blo 5,000'

181°-249° byd 30 NM blo 5,000'

250°-274° byd 20 NM

295°-315° byd 35 NM blo 3,000'

DME unusable:

076°-109° byd 30 NM blo 5,000'

110°-180° byd 25 NM blo 5,000'

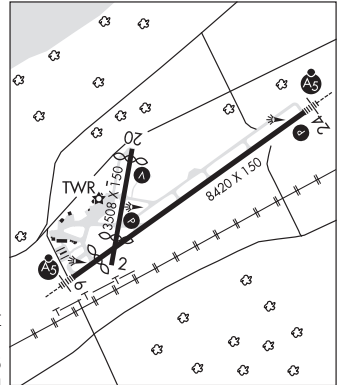
181°-249° byd 30 NM blo 5,000'

250°-274° byd 20 NM

295°-315° byd 35 NM blo 3,000'

**ILS/DME** 110.3 I-ERI Chan 40 Rwy 06. Class IE. Unmonitored when ATCT closed.

**ILS/DME** 110.3 I-AWY Chan 40 Rwy 24. Class ID.



**THERMAL-G** (Ø3G) 3 W UTC-5(-4DT) N42°01.24' W80°04.24'

**DETROIT**

1434 NOTAM FILE AOO

**RWY 07-25:** 1264X110 (TURF) 1.0% up E

**RWY 07:** Rgt ttc.

**AIRPORT REMARKS:** Attended continuously. Glider ops on the arpt. Rwy 07-25 NSTD markings, rwy marked with white tires.

Turf with topsoil base can be soft; call for condition. 945' turf twy on east end of rwy. 1,000' turf twy on west end of rwy. Circular hot air balloon launching pad radio controlled model airplane circle.

**AIRPORT MANAGER:** 814-866-1131

**COMMUNICATIONS:** CTAF 122.9

**CLEARANCE DELIVERY PHONE:** For CD ctc Buffalo Apch at 716-626-6920, when Apch clsd ctc Cleveland ARTCC at 440-774-0232.