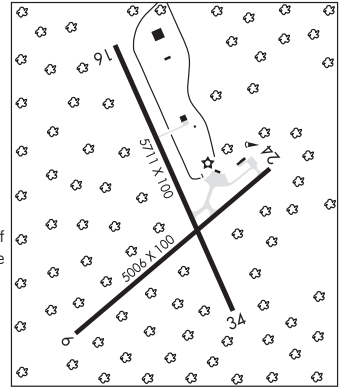


**MID-STATE** (PSB)(KPSB) 8 E UTC-5(-4DT) N40°53.06' W78°05.24'  
 1948 B NOTAM FILE AOO  
**RWY 16-34:** H5711X100 (ASPH) S-48, D-60, 2D-90 MIRL

**DETROIT**  
 H-10H, 121, L-301  
 IAP

0.5% up NW  
**RWY 16:** Brush.  
**RWY 34:** Trees.  
**RWY 06-24:** H5006X100 (ASPH) S-48, D-60, 2D-90 MIRL  
 1.0% up NE  
**RWY 06:** Trees.  
**RWY 24:** Trees.



**SERVICE:** LGT ACTIVATE MIRL Rwy 06-24 and Rwy 16-34  
 CTAF—122.9.  
**AIRPORT REMARKS:** Unattended. Arpt aces ltd; ctc mgr to coord  
 814-342-1080. Deer on and in/ov arpt. Heavy glider activity during  
 dalg't hrs, all alts, on and in/ov arpt and within 15 NM east and south of  
 arpt. Rwy 16-34 asph crumbling in middle of rwy causing slight pothole  
 and FOD. Rwy 06, Rwy 16 and Rwy 24 markings extremely faded.  
**AIRPORT MANAGER:** 814-342-1080

**WEATHER DATA SOURCES:** AWOS-3 127.525 (814) 343-4531. Ots indef.  
**COMMUNICATIONS:** CTAF 122.9  
**RCO** 122.1R 115.5T (ALTOONA RADIO)  
**PHILIPSBURG RCO** 122.5 (ALTOONA RADIO)  
**NEW YORK CENTER APP/DEP CON** 134.8

**CLEARANCE DELIVERY PHONE:** For CD if una to ctc on FSS freq, ctc New York ARTCC at 631-468-1425.

**RADIO AIDS TO NAVIGATION:** NOTAM FILE AOO.

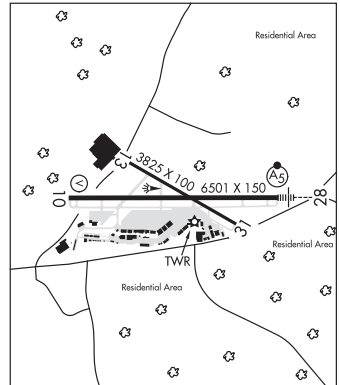
**PHILIPSBURG (H) VORTAC** 115.5 PSB Chan 102 N40°54.98' W77°59.56' 256° 4.7 NM to fld. 2443/10W.  
**COMM/NAV/WEATHER REMARKS:** Ctc NG Ops 30.5, 122.85, 242.4.

**PITTSBURGH**

**ALLEGHENY CO** (AGC)(KAGC) 4 SE UTC-5(-4DT) N40°21.27' W79°55.74'  
 1252 B LRA NOTAM FILE AGC  
**RWY 10-28:** H6501X150 (CONC-GRVD) S-90, D-120, 2S-152,  
 2D-210 HIRL

**DETROIT**  
 H-10H, 121, L-29C  
 IAP, AD

**RWY 10:** REIL. VASI(V4L)—GA 3.0° TCH 47'. RVR-R Trees.  
**RWY 28:** MALSR. RVR-T Trees.  
**RWY 13-31:** H3825X100 (CONC-GRVD) S-20, D-22 HIRL  
**RWY 13:** REIL. Pole.  
**RWY 31:** REIL.



**LAND AND HOLD—SHORT OPERATIONS**

LDG RWY	HOLD—SHORT POINT	AVBL LDG DIST
RWY 10	13-31	3250

**SERVICE:** S4 FUEL 100LL, JET A, A+ OX 1, 2, 3, 4  
**AIRPORT REMARKS:** Attended continuously. Birds and deer on and in/ov  
 arpt. Jet A anti-ice avbl upon req. Ldg fee for acct 5,000 lbs and abv  
 to include all helicopters.

**AIRPORT MANAGER:** (412) 466-4327  
**WEATHER DATA SOURCES:** ASOS 120.55 (412) 466-8968.  
**COMMUNICATIONS:** ATIS 120.55 UNICOM 122.95

**RCO** 122.2 (ALTOONA RADIO)  
**Ⓡ PITTSBURGH APP/DEP CON** 119.35  
**TOWER** 121.1 **GND CON** 121.7

**AIRSPACE:** CLASS D.

**RADIO AIDS TO NAVIGATION:** NOTAM FILE AGC.

(L) (L) **VOR/DME** 110.0 AGC Chan 37 N40°16.72' W80°02.45' 057° 6.9 NM to fld. 1285/9W.

VOR portion unusable:  
 036°-059° byd 10 NM blo 7,000'  
 071°-175°  
 226°-261° byd 10 NM

**ILS** 109.1 I-SAQ Rwy 10. Class IE. Unmonitored.  
**ILS** 109.1 I-AGC Rwy 28. Localizer offset angle 1.98 deg.

**HELIPAD H1:** H47X45 (CONC)

**HELIPORT REMARKS:** Heliport H1 located on general aviation apron E of Twy C.