

FARMINGTON**CHORMAN** (D74) 2 SW UTC-5(-4DT) N38°50.97' W75°36.77'WASHINGTON
L-34F, 36J, A

66 B NOTAM FILE MIV

RWY 16-34: H3588X37 (ASPH) LIRL**RWY 16:** REIL.**RWY 34:** REIL. Thld dsplcd 438'. Pole.**SERVICE:** S4 **LGT** For rotating bcn call 302-349-5055 or 645-9225. For LIRL Rwy 16-34 and REIL Rwy 16 and Rwy 34 call 302-349-5055 or 645-9225.**AIRPORT REMARKS:** Attended Mon-Fri 1330Z±-dusk. AG spraying activity on and invof arpt. Loading pad adjacent to east side Rwy 34.**AIRPORT MANAGER:** 302-349-5055**COMMUNICATIONS:** CTAF 122.9**CLEARANCE DELIVERY PHONE:** For CD ctc Washington ARTCC at 703-771-3587.**RADIO AIDS TO NAVIGATION:** NOTAM FILE MIV.**WATERLOO (L) (L) VOR/DME** 112.6 ATR Chan 73 N38°48.59' W75°12.68' 286° 19.0 NM to fld. 5/9W.

DME unusable:

179°-293° byd 30 NM blo 2,000'

VOR unusable:

345°-010°

FELTON**ALBANNA AVIATION** (ØN6) 2 NE UTC-5(-4DT) N39°00.77' W75°32.04'

WASHINGTON

50 NOTAM FILE MIV

RWY 15-33: 2048X40 (TURF)**RWY 15:** Bldg.**RWY 33:** Trees.**SERVICE:** S4**AIRPORT REMARKS:** Attended Mon-Fri 1300-2200Z±.**AIRPORT MANAGER:** 410-535-2045**COMMUNICATIONS:** CTAF/UNICOM 123.0**CLEARANCE DELIVERY PHONE:** For CD ctc Washington ARTCC at 703-771-3587.**GEORGETOWN****DELAWARE COASTAL** (GED)(KGED) 2 SE UTC-5(-4DT) N38°41.26' W75°21.56'

WASHINGTON

53 B NOTAM FILE GED

H-10I, 12I, L-34F, 36J, A
IAF**RWY 04-22:** H5500X150 (ASPH-GRVD) S-50, D-175 PCN 43 F/A/X/T

MIRL

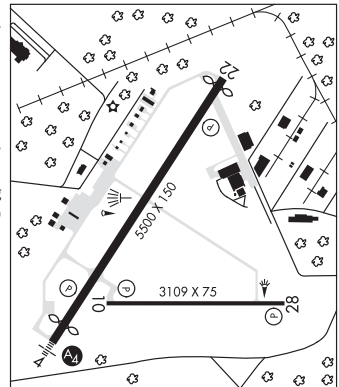
RWY 04: MALS. REIL. PAPI(P4L)—GA 3.0° TCH 45'. Thld dsplcd 370'.
Trees.**RWY 22:** REIL. PAPI(P4L)—GA 3.0° TCH 45'. Thld dsplcd 169'.**RWY 10-28:** H3109X75 (ASPH) S-50, D-91 PCN 36 F/A/X/T MIRL**RWY 10:** REIL. PAPI(P2L)—GA 3.5° TCH 46'.**RWY 28:** REIL. PAPI(P2L)—GA 3.0° TCH 40'.**SERVICE:** S4 **FUEL** 100LL, JET A **LGT** ACTVT MALS Rwy 04; REIL Rwy 04, 22, 10, 28; MIRL Rwy 04-22 and 10-28—CTAF.**AIRPORT REMARKS:** Attended 1300-2300Z±. Arpt unattended Thanksgiving Day and Christmas Day. Birds, deer, and other wildlife invof rwy. FBO hrs 1300-2100Z±. For svc/fuel aft hrs call 302-855-2355. PAEW within safety area of rwy and twys. U.S. Customs 72 hrs notice required ctc (302) 855-2355.**AIRPORT MANAGER:** 302-855-7774**WEATHER DATA SOURCES:** ASOS 118.375 (302) 855-1052.**COMMUNICATIONS:** CTAF/UNICOM 123.0**WATERLOO RCO** 122.1R 112.6T (MILLVILLE RADIO)Ⓡ **DOVER APP/DEP CON** 132.425**CLEARANCE DELIVERY PHONE:** For CD if Dover Apch una via GCO 125.55, ctc Washington ARTCC at 703-771-3587.**RADIO AIDS TO NAVIGATION:** NOTAM FILE MIV.**WATERLOO (L) (L) VOR/DME** 112.6 ATR Chan 73 N38°48.59' W75°12.68' 233° 10.1 NM to fld. 5/9W.

DME unusable:

179°-293° byd 30 NM blo 2,000'

VOR unusable:

345°-010°

**HADIN** N39°34.88' W75°36.84' NOTAM FILE ILG.

WASHINGTON

NDB (LOMW) 248 IL 013° 5.9 NM to New Castle. 21/10W.

L-34G