

GLENDEVIE

DAWSON COMMUNITY (GDV)(KGDV) 4 NW UTC-7(-6DT) N47°08.32' W104°48.43'

BILLINGS

H-1F, 2H, L-13E
IAP, AD

2458 B NOTAM FILE GDV

RWY 12-30: H5704X100 (ASPH-GRVD) S-38, D-50 MIRL

RWY 12: REIL. VASI(V4L)—GA 3.0° TCH 37'.

RWY 30: REIL. VASI(V4L)—GA 3.0° TCH 37'.

RWY 02-20: H3002X60 (ASPH) MIRL

RWY 02: PAPI(P2L)—GA 3.0° TCH 26'.

RWY 20: PAPI(P2L)—GA 3.0° TCH 24'.

RUNWAY DECLARED DISTANCE INFORMATION

RWY 02: TORA-3002 TODA-3002 ASDA-3002 LDA-3002

RWY 12: TORA-5704 TODA-5704 ASDA-5704 LDA-5704

RWY 20: TORA-3002 TODA-3002 ASDA-3002 LDA-3002

RWY 30: TORA-5704 TODA-5704 ASDA-5704 LDA-5704

SERVICE: S2 **FUEL** 100LL, JET A+ **LGT** ACTIVATE MIRL Rwy 02-20 and Rwy 12-30, PAPI Rwy 02 and Rwy 20, REIL Rwy 12 and Rwy 30—CTAF. VASI Rwy 12 and Rwy 30 opr continuously.

AIRPORT REMARKS: Attended 1430-0130Z†. Afld sfc conds unmonitored Nov-May 0800-1800Z†. Rwy 02-20 has edge lips exceeding 3 in.

AIRPORT MANAGER: 406-989-2054

WEATHER DATA SOURCES: AWOS-3PT 135.075 (406) 687-3346.

COMMUNICATIONS: CTAF/UNICOM 122.8

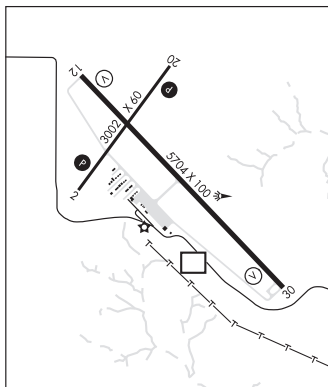
RCD 122.55 (GREAT FALLS RADIO)

Ⓡ SALT LAKE CENTER APP/DEP CON 126.85

CLEARANCE DELIVERY PHONE: For CD if una to ctc on FSS freq, ctc Salt Lake ARTCC at 801-320-2568.

RADIO AIDS TO NAVIGATION: NOTAM FILE MLS.

MILES CITY (VH) (DH) VORW/DME 112.1 MLS Chan 58 N46°22.93' W105°57.21' 037° 65.6 NM to fld. 2666/9E.



GLENDEVIE N47°08.00' W104°48.28' NOTAM FILE GDV.

BILLINGS

(H) DME 114.35 GDV Chan 90(Y) at Dawson Community. 2457/0W.

L-13E

RCD 122.55 (GREAT FALLS RADIO)

GREAT FALLS INTL (GTF)(KGF) P (ANG) 3 SW UTC-7(-6DT) N47°28.94' W111°22.22'

GREAT FALLS

H-1E, L-13C
IAP, AD

3680 B AOE LRA ARFF Index—See Remarks NOTAM FILE GTF

RWY 03-21: H10502X150 (ASPH-GRVD) S-116, D-225, 2S-175,

2D-424, 2D/D1-555, 2D/2D2-915 PCN 58 F/B/X/T HIRL CL

RWY 03: ALSF2. TDZL. PAPI(P4L)—GA 3.0° TCH 70'. RVR-TMR Road.

RWY 21: REIL. PAPI(P4R)—GA 3.0° TCH 75'. RVR-TMR 0.3% up.

RWY 17-35: H6030X150 (ASPH-GRVD) S-87, D-140, 2D-245,

2D/2D2-245 PCN 30 F/B/X/T MIRL

RWY 17: PAPI(P4L)—GA 3.0° TCH 47'. Thld dsplcd 230'. Road.

RWY 35: PAPI(P4L)—GA 3.0° TCH 48'.

RUNWAY DECLARED DISTANCE INFORMATION

RWY 03: TORA-10502 TODA-10502 ASDA-10502 LDA-10502

RWY 17: TORA-6030 TODA-6030 ASDA-6030 LDA-5800

RWY 21: TORA-10502 TODA-10502 ASDA-10502 LDA-10502

RWY 35: TORA-5400 TODA-5400 ASDA-5400 LDA-5400

SERVICE: S4 **FUEL** 100LL, JET A **OX** 1, 2, 3, 4 **LGT** Rwy 21 REIL opr continuously when rwy lgts are on. Rwy lgts controlled by twr. RWY 03 PAPI UNUSBL BYD 9 DEGS right of CNTRLN. **MILITARY— JASU** 7(MD-3) 3(MC-1) 20(MC-11) 9(MD-4MO) 2(M32A-60A) **FUEL** A++(ANG) A (C406-453-7613) (NC-100LL) **FLUID** SP PRESAIR OIL O-128-133-148-156(Mil) **TRAN ALERT** Ltd tran svc only avbl for acct participating in ANG Ops with Prior Coordination (PPR).

AIRPORT REMARKS: Attended continuously. Birds on and invof arpt. Class I, ARFF Index B. Index level C ARFF capability is available at all times. Twy C unrstd weight and avbl for taxiing acct. User fee arpt. Flight Notification Service (ADCUS) avbl.

AIRPORT MANAGER: 406-727-3404

WEATHER DATA SOURCES: ASOS 126.6 (406) 454-7551.

COMMUNICATIONS: ATIS 126.6 UNICOM 122.95

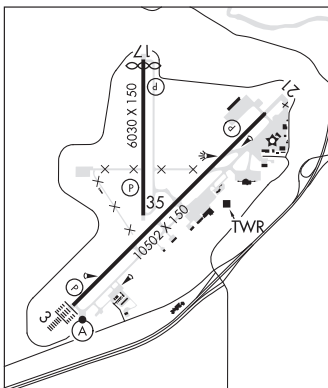
RCD 122.3 (GREAT FALLS RADIO)

Ⓡ APP/DEP CON 128.6

TOWER 118.7 **GND CON** 121.7 **CLNC DEL** 121.7

AIRSPACE: CLASS D.

TRSA svc ctc APP CON 128.6



CONTINUED ON NEXT PAGE

NW, 19 MAY 2022 to 14 JUL 2022

CONTINUED FROM PRECEDING PAGE

RADIO AIDS TO NAVIGATION: NOTAM FILE GTF.

(H) (H) VORTACW 115.1 GTF Chan 98 N47°27.00' W111°24.73' 025° 2.6 NM to fld. 3672/16E.

ILS/DME 111.3 I-SMR Chan 50 Rwy 03. Class IIIE.

HAMILTON

RAVALLI CO (HRF)(KHRF) 1 E UTC-7(-6DT) N46°15.43' W114°07.43'

3636 B TPA-4436(800) NOTAM FILE GTF

RWY 17-35: H5200X75 (ASPH) S-40, D-50 PCN 15 F/D/Y/U MIRL

RWY 17: PAPI(P2L)—GA 3.0° TCH 35'.

RWY 35: PAPI(P2L)—GA 3.0° TCH 35'.

SERVICE: S4 FUEL 100LL, JET A, A+ LGT ACTVT PAPI Rwy 17, 35;
MIRL Rwy 17-35—CTAF. For MIRL Rwy 17-35 drg dalgt hrs ctc ap
mgr 406-375-9149.

AIRPORT REMARKS: Unattended. Ultralight activity on and invof arpt.

Sailplane on and invof arpt during dalgt hrs.

AIRPORT MANAGER: 406-375-9149

WEATHER DATA SOURCES: AWOS-3P 119.825 (406) 375-9149. press *3

COMMUNICATIONS: CTAF/UNICOM 122.8

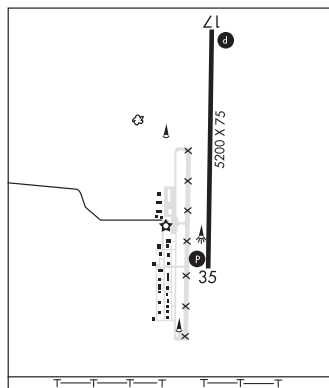
Ⓡ SALT LAKE CENTER APP/DEP CON 132.4

CLEARANCE DELIVERY PHONE: For CD ctc Salt Lake ARTCC at
801-320-2568.

GREAT FALLS

H-1D, L-13C

IAP



ROTORCRAFT HELIPORT (M62) 2 S UTC-7(-6DT) N46°12.40' W114°09.18'

3630 NOTAM FILE GTF

HELIPAD HI: H55X50 (CONC)

HELIPORT REMARKS: Attended Mon-Fri 1500-0000Z±.

AIRPORT MANAGER: 406-381-0419

COMMUNICATIONS: CTAF/UNICOM 122.8

CLEARANCE DELIVERY PHONE: For CD ctc Salt Lake ARTCC at 801-320-2568.

GREAT FALLS

HARDIN

BIG HORN CO (ØØU) 3 W UTC-7(-6DT) N45°44.66' W107°39.63'

3025 B NOTAM FILE GTF

RWY 08-26: H4491X75 (ASPH) MIRL 0.5° up W

RWY 08: PAPI(P2L)—GA 3.0° TCH 40'.

RWY 26: PAPI(P2L)—GA 3.0° TCH 40'.

SERVICE: FUEL 100LL LGT ACTVT PAPI Rwy 08 and Rwy 26; MIRL Rwy 08-26—CTAF. Bcn ACTVT—CTAF.

AIRPORT REMARKS: Unattended.

AIRPORT MANAGER: 406-679-0541

WEATHER DATA SOURCES: AWOS-3 118.325 (406) 665-4241.

COMMUNICATIONS: CTAF/UNICOM 122.8

Ⓡ SALT LAKE CENTER APP/DEP CON 132.425

CLEARANCE DELIVERY PHONE: For CD ctc Billings ApcH at 406-255-2798

BILLINGS

L-13D

IAP