

**ROSALIA MUNI** (72S) 2 W UTC-8(-7DT) N47°14.19' W117°25.28'

SEATTLE

2170 B NOTAM FILE SEA

**RWY 02-20:** H2807X45 (ASPH) S-15.5 MIRL

**RWY 02:** Thld dsplcd 165'. Tree.

**RWY 20:** Thld dsplcd 137'. Road. Rgt tfc.

**RUNWAY DECLARED DISTANCE INFORMATION**

**RWY 02:** TORA-2807 TODA-2807 ASDA-2670 LDA-2505

**RWY 20:** TORA-2807 TODA-2807 ASDA-2642 LDA-2505

**SERVICE:** LGT ACTIVATE MIRL Rwy 02-20-122.9. Rwy 02-20 twy reflectors, no twy lgts.

**AIRPORT REMARKS:** Unattended. Pilots bring own ropes.

**AIRPORT MANAGER:** (509) 981-3206

**COMMUNICATIONS:** CTAF 122.9

**CLEARANCE DELIVERY PHONE:** For CD ctc Spokane Apch at 509-742-2522

**ROSARIO SPB** (W49) 0 S UTC-8(-7DT) N48°38.74' W122°52.08'

SEATTLE

00 NOTAM FILE SEA

**WATERWAY 16W-34W:** 10000X1000 (WATER)

**WATERWAY 16W:** Hill.

**WATERWAY 07W-25W:** 2500X1000 (WATER)

**WATERWAY 07W:** Hill.

**WATERWAY 25W:** Hill.

**SEAPLANE REMARKS:** Attended dglgt hrs. Tran dock avbl. Ctc harbormaster for overnight seaplane moorage. Phone number 360-376-2222. Select option 4 for marina office.

**AIRPORT MANAGER:** 360-376-2222

**COMMUNICATIONS:** CTAF 128.25

**CLEARANCE DELIVERY PHONE:** For CD ctc Whidbey Apch at 360-257-3310.

**SANDERSON FLD** (See SHELTON on page 227)

## SEATTLE

**BOEING FLD/KING CO INTL** (BFI)(KBFI) 4 S UTC-8(-7DT) N47°31.80' W122°18.12'

SEATTLE

22 B TPA—See Remarks AOE LRA Class IV, ARFF Index A NOTAM FILE BFI

H-1B, L-1D  
IAP, AD

**RWY 14R-32L:** H10007X200 (ASPH-GRVD) S-100, D-200, 2D-500,

2D/2D2-800 PCN 90 F/B/W/T HIRL

**RWY 14R:** MALSF. PAPI(P4L)—GA 3.0° TCH 55'. RVR-T Fence. Rgt tfc.

**RWY 32L:** REIL. PAPI(P4L)—GA 3.1° TCH 66'. RVR-R Thld dsplcd 887'. Railroad.

**RWY 14L-32R:** H3709X100 (ASPH-GRVD) S-120, D-250, 2D-550, 2D/2D2-1109 PCN 71 F/A/X/T MIRL

**RWY 14L:** REIL. PAPI(P2L)—GA 3.0° TCH 39'. Thld dsplcd 250'.

**RWY 32R:** REIL. PAPI(P2L)—GA 3.0° TCH 39'. Thld dsplcd 375'. Tree. Rgt tfc.

**RUNWAY DECLARED DISTANCE INFORMATION**

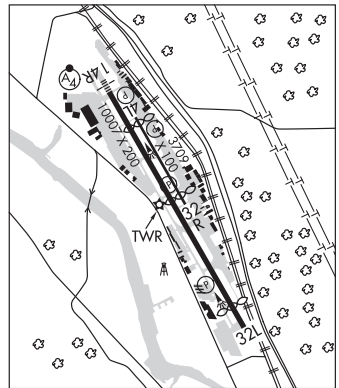
**RWY 14R:** TORA-10000 TODA-10000 ASDA-9120 LDA-9120

**RWY 32L:** TORA-10000 TODA-10000 ASDA-10000 LDA-9120

**SERVICE:** S4 FUEL 100LL, JET A OX 1, 2, 3, 4 LGT HIRL Rwy 14R-32L open dusk-dawn. MIRL Rwy 14L-32R not opr 0600-1500Z†.

**NOISE:** For NS ABTMT procedures, ctc noise office at 206-296-7334.

**AIRPORT REMARKS:** Attended continuously. Bird flocks within arpt vcnty, check Icl advisories. Rwy 14L-32R not avbl for air carrier ops. Rwy 14L-32R ltd to use by acft up to 12,500 lbs. Touch and go ldgts prohibited 0600-1500Z†. Twr 80' AGL lctd 1200' N and 900' W of thld Rwy 14R. 14' AGL ant (mkd/lgt) 230' fm AER Rwy 14L 125' rgt. No dep auth from Bravo 9 int. For Boeing military flight center ramp permission, ctc ramp coordinator 206-714-8030. Prior to arrival onto Boeing commercial airplane ramp, ctc Boeing Seattle at 123.425 or call 206-662-4500. Advanced permission to access Boeing commercial airplane ramp only, ctc 206-544-5900 Mon-Fri 1600-0000Z†. Twy A1 and Twy A from A1-A3 rstd to acft up to 150,000 lbs and less than 108' wingspan. Twy A2, Twy B2 and Twy A11 rstd to acft up to 60,000 lbs. Twy A3, Twy A5, and Twy A8 rstd to acft up to 12,500 lbs. Extv helicopter trng act on Twy B. Twy Z and 880' special use pavement avbl 72 hrs PPR, ctc arpt ops 206-296-7334. GA itinerant/tran parking avbl, ctc arpt ops 206-296-7334. PPR for parking arrangements for acft over 12,500 lbs max tkf wt is recommended. For museum tran acft parking, PPR, call museum security (206) 920-9770. Rwy 14L-32R TPA-1000(979), Rwy 14R-32L TPA-800(779). User fee arpt. Flight Notification Service (ADCUS) avbl.



CONTINUED ON NEXT PAGE

## CONTINUED FROM PRECEDING PAGE

**AIRPORT MANAGER:** (206) 296-7334

**WEATHER DATA SOURCES:** ASOS (206) 658-6435

**COMMUNICATIONS:** ATIS 127.75 206-767-4113 UNICOM 122.95

SEATTLE RCO 122.5 (SEATTLE RADIO)

Ⓡ SEATTLE APP/DEP CON 119.2 (076°-160° Rwy 14) (341°-075°) 120.1 (199°-300°) 120.4 (301°-340° Rwy 32) 125.9 (076°-160° Rwy 32) (301°-340° Rwy 14) 126.5 (161°-198°)

BOEING TOWER 118.3 (312°-127°) (Deps Rwy 14L-32R) 120.6 (128°-311°) (Deps Rwy 14R-32L and all jets; heavy act and IFR arrs)

GND CON 121.9 CLNC DEL 132.4

**CLEARANCE DELIVERY PHONE:** For CD when ATCT is clsd ctc Seattle Apch at 206-214-4722.

**AIRSPACE:** CLASS D.

**VOR TEST FACILITY (VOT)** 108.6

**RADIO AIDS TO NAVIGATION:** NOTAM FILE SEA.

SEATTLE (H) (H) VORTACW 116.8 SEA Chan 115 N47°26.12' W122°18.58' 344° 5.7 NM to fld. 348/19E.

VOR unusable:

008°-023° byd 20 NM blo 3,500'

008°-023° byd 30 NM blo 4,100'

233°-273° byd 20 NM blo 8,000'

233°-273° byd 30 NM blo 10,000'

233°-273° byd 35 NM blo 11,000'

233°-273° byd 8 NM blo 5,500'

303°-333° byd 20 NM blo 2,900'

303°-333° byd 30 NM blo 4,000'

333°-353° byd 15 NM blo 3,500'

353°-008° byd 20 NM blo 2,900'

DME unusable:

008°-028° byd 20 NM blo 4,500'

008°-028° byd 30 NM blo 7,000'

203°-219° byd 27 NM

220°-225° byd 20 NM

226°-239° byd 27 NM

240°-253° byd 15 NM

303°-008° byd 30 NM blo 3,500'

TACAN AZIMUTH unusable:

008°-163°

303°-008° byd 30 NM blo 3,500'

ILS/DME 110.9 I-BFI Chan 46 Rwy 14R. Class IA. DME unusable byd 30° left of course. LOC unusable byd 20° left of course; backcourse unusable byd 10° left and right of course; backcourse unusable byd 13 NM blw 3,500'.

ILS/DME 110.9 I-CHJ Chan 46 Rwy 32L. Class IA. LOC unusable byd 15° rgt of course. ILS/DME unusable byd 10° rgt of course. Gp unusable byd 7NM from thr.

**COMM/NAV/WEATHER REMARKS:** Emerg freq 121.5 not avbl at twr.

**KENMORE AIR HARBOR SPB** (W55) 1 N UTC-8(-7DT) N47°37.74' W122°20.32'

SEATTLE

14 AOE NOTAM FILE SEA

**WATERWAY 16W-34W:** 5000X500 (WATER)

**NOISE:** Special NS ABTMT rules in effect ctc opr for pat info. Do not taxi closer than 200' from shoreline exc in close proximity to Kenmore Air Harbor.

**SEAPLANE REMARKS:** Attended dawn-dusk. Fuel avbl emerg only. Ngt ldg's not recommended due to unlgtd small watercraft.

Kite flying in public park at north end of arpt and UAVS operating at the N and S ends. When consistent with safety, avoid 'on the step' ops South and West of red buoy. Five tempo buoys have been placed along the North-South cntrln of Lake Union, each separated by approximately 750', and mark the aprx location of the preferred seaplane opr area. The buoys have a yellow flashing light that can be ACTIVATED by five clicks on 122.9, to alert boaters of an impending seaplane tkof or landing. Run time on the lights is 60 seconds. The buoy/light system is advisory only, and boaters are not required to clear the area. The buoys will be removed within five days following Labor Day, or earlier. Incr boating ops on lake Apr 15 thru Oct 15. All tkf and ldg in ctr of lake. Call 425-486-1257 X2010 for apvl at least 3 hrs prior to arr. Docking fee. Lake Union dock freq 130.30. \$150 transit docking fee. Flight Notification Service (ADCUS) avbl.

**AIRPORT MANAGER:** 425-486-1257

**COMMUNICATIONS:** CTAF 122.9

**CLEARANCE DELIVERY PHONE:** For CD ctc Seattle Apch at 206-214-4722.

**SEATTLE SEAPLANES SPB** (ØWØ) 1 N UTC-8(-7DT) N47°37.66' W122°19.91'

SEATTLE

14 NOTAM FILE SEA

**WATERWAY 18W-36W:** 9500X300 (WATER)

**SERVICE:** S2

**SEAPLANE REMARKS:** Attended 1600Z±-dusk. Small watercraft act on lake.

**AIRPORT MANAGER:** 206-329-9638

**COMMUNICATIONS:** CTAF 122.9

**CLEARANCE DELIVERY PHONE:** For CD ctc Seattle Apch at 206-214-4722.