

CONTINUED FROM PRECEDING PAGE

AIRSPACE: CLASS E svc 1300-0600Z†; other times CLASS G.

RADIO AIDS TO NAVIGATION: NOTAM FILE GCC.

GILLETTE (H) (H) VOR/DME 114.6 GCC Chan 93 N44°20.87' W105°32.61' at fld. 4336/9E.

VOR portion unusable:

253°-278° byd 20 NM blo 8,000'

DME portion unusable:

163°-193° byd 25 NM blo 10,300'

193°-268° byd 20 NM blo 8,000'

193°-268° byd 30 NM blo 13,000'

268°-333° byd 22 NM blo 10,500'

DERYK NDB (MHW/LOM) 380 GC N44°16.25' W105°31.33' 342° 4.7 NM to fld. 4674/9E. NDB unmonitored 0500-1300Z‡.

ILS/DME 110.1 I-LLT Chan 38 Rwy 34. Class IT. LOM DERYK NDB. Glideslope unusable byd 8 NM. Unmonitored when ATCT clsd.

GLENDO

THOMAS MEML (76V) 1 N UTC-7(-6DT) N42°31.20' W105°01.20'

CHEYENNE

4666 NOTAM FILE CPR

RWY 16-34: 4397X70 (TURF-DIRT)

RWY 16: Tree.

RWY 34: Road.

AIRPORT REMARKS: Unattended. Ctc town hall 307-735-4242 or arpt mgr 307-331-5005 prior to use for sfc cond. Ocnl antelope on rwy. First 500 ft Rwy 34 end very rough. Rwy 16-34 mowed natural grass. Rwy 16-34 muddy, slick and soft when wet, ocnl gopher holes. Unrestricted vehicle access.

AIRPORT MANAGER: (307) 331-5005

COMMUNICATIONS: CTAF 122.9

CLEARANCE DELIVERY PHONE: For CD ctc Denver ARTCC at 303-651-4257.

GREEN RIVER

GTR GREEN RIVER INTERGALACTIC SPACEPORT (48U) 4 S UTC-7(-6DT) N41°27.48'

SALT LAKE CITY

W109°29.41'

7182 NOTAM FILE CPR

RWY 04-22: 5652X75 (DIRT)

AIRPORT REMARKS: Unattended. No snow removal avbl. Rwy soft when wet. Rwy 04 rwy end and edge delineated using cone mkr. Rwy 22 rwy end and edge delineated using cone mkr.

AIRPORT MANAGER: 307-872-0525

COMMUNICATIONS: CTAF 122.9

CLEARANCE DELIVERY PHONE: For CD ctc Salt Lake ARTCC at 801-320-2568.

GREYBULL

SOUTH BIG HORN CO (GEY)(KGEY) 2 NW UTC-7(-6DT) N44°31.08' W108°04.98'

BILLINGS

3942 B NOTAM FILE GEY

H-1E, L-13D

RWY 16-34: H7003X150 (ASPH) S-85, D-150, 2D-290 MIRL

IAP

RWY 16: REIL. PAPI(P4L)—GA 3.0° TCH 50'.

RWY 34: REIL. PAPI(P4L)—GA 3.0° TCH 50'.

RWY 08-26: H3953X75 (ASPH) S-12.5

SERVICE: S4 FUEL 100LL, JET A LGT ACTIVATE MIRL Rwy 16-34, PAPI

Rwy 16 and Rwy 34, REIL Rwy 16 and Rwy 34—CTAF.

AIRPORT REMARKS: Unattended. Fuel 24 hr credit card svc avbl 100LL only.

Jet A fuel is full svc only; for Jet A call 307-680-4897. Antelope on and

invof rwy. Terrain 1066' abv arpt elevation 4-5 miles north and

northeast of arpt. For Airframe or Powerplant rprs call 307-431-1466.

AIRPORT MANAGER: 307-337-8159

WEATHER DATA SOURCES: ASOS 135.325 (307) 765-9406. Opr full-time

0700-0659Z‡.

COMMUNICATIONS: CTAF 122.9

Ⓡ SALT LAKE CENTER APP/DEP CON 127.75

CLEARANCE DELIVERY PHONE: For CD ctc Salt Lake ARTCC at 801-320-2568.

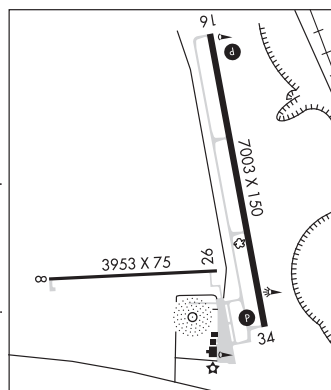
RADIO AIDS TO NAVIGATION: NOTAM FILE WRL.

WORLAND (L) (L) VOR/DME 114.8 RLY Chan 95 N43°57.85'

W107°57.05' 337° 33.7 NM to fld. 4204/13E.

GREYBULL NDB (MHW) 275 GEY N44°30.69'

W108°04.97' at fld. 3920/10E. NOTAM FILE GEY.



GTR GREEN RIVER INTERGALACTIC SPACEPORT (See GREEN RIVER on page 253)